



**ABA|I**  
Association for Behavior Analysis International

ISSN 2151-4623

# INSIDE BEHAVIOR ANALYSIS

NEWSLETTER OF THE ASSOCIATION FOR BEHAVIOR ANALYSIS INTERNATIONAL

VOLUME 14  
**No 2**  
AUGUST  
2022



E L E V E N T H   I N T E R N A T I O N A L   C O N F E R E N C E

2 0 2 2  
**dublin**  
I R E L A N D

**REGISTER TODAY!**

[www.abainternational.org/events/international-2022](http://www.abainternational.org/events/international-2022)

**Program details on pages 19-22 of this issue!**

## Table of Contents

### Inside Behavior Analysis

Publication of the Association for Behavior Analysis International

**Issue Date:** August 2022

**Issue Number:** Vol. 14, No. 2

Frequency of Publication: *Inside Behavior Analysis* is published three times annually. Subscriptions are provided with ABAI membership; others may subscribe from the ABAI website:

[www.abainternational.org](http://www.abainternational.org)

|                                  |  |
|----------------------------------|--|
| Ruth Anne Rehfeldt, Ph.D.        | President                                    |
| Carol Pilgrim, Ph.D.             | Past President                               |
| M. Christopher Newland, Ph.D.    | President-Elect                              |
| Claire St. Peter, Ph.D.          | Applied Representative                       |
| Martha Pelaez, Ph.D.             | At-Large Representative                      |
| Jomella Watson-Thompson, Ph.D.   | At-Large Representative                      |
| Christine Hughes, Ph.D.          | Experimental Representative                  |
| Deisy das Graças de Souza, Ph.D. | International Representative                 |
| Rita Olla, M.S.                  | Past Student Representative                  |
| Stephanie Valentini, M.S.        | Student Representative                       |
| Fernanda Oda, M.S.               | Student Representative-Elect                 |
| Maria E. Malott, Ph.D.           | Chief Executive Officer/<br>Executive Editor |

|                 |                          |
|-----------------|--------------------------|
| Katie Mahaffy   | Managing Editor          |
| Aaron Barsy     | Publications Coordinator |
| Martin C. Burch | Art Director             |

© 2022 Association for Behavior Analysis International

All rights reserved. No part of this publication may be reproduced, stored in a retrieval system, or transmitted in any form or by any means without the written permission of the Association for Behavior Analysis International. ABAI reserves the right to edit all copy. All advertisements are accepted and published on the representation of the advertiser and its agency that they are authorized to publish the entire contents thereof and that, to the best of their knowledge and belief, all statements made therein are true. The advertiser and the agency agree to hold the publisher harmless from any and all claims arising out of advertising published. Publication of articles, announcements, or acceptance of advertisements in *Inside Behavior Analysis* does not imply endorsement by ABAI. ABAI reserves the right to reject any advertisement or copy that ABAI, for any reason, deems unsuitable for publication in any association publication.

Association for Behavior Analysis International®

550 West Centre Avenue, Suite 1

Portage, MI 49024

269 492 9310

[www.abainternational.org](http://www.abainternational.org)

**ON THE COVER: "Tall Ships, Boston Massachusetts"**

Illustration: JD ON FLICKR.COM

Letter from the ABAI President 2

Presidential Scholar Address Essay 8

2022 Outstanding Mentor Awards 10

Scholarly Contributions to DEI 14

2022 Fellows of ABAI 16

11th International Conference Preview in Dublin, IE 19

Updates From ABAI's Special Interest Groups 24

Calendar of Upcoming Conferences 48

## President's Column

# A Time to Dance, a Time to Mourn

BY RUTH ANNE REHFELDT

Following the long and testing years of 2020 and 2021, ABAI resumed its annual international convention in Boston, MA this past May. With the number of in-person conferences around the world still paling in comparison relative to that prior to the onset of the worldwide pandemic, ABAI boldly and competently delivered its first live annual convention in three years, second only to the autism conference that was held in Seattle, WA this past March.



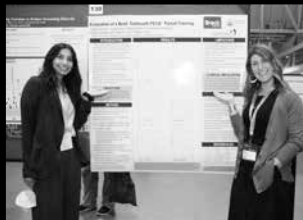
Many among the 4,031 conference attendees (including 361 international travelers and 1,088 student members) were reunited with friends, colleagues, and mentors who they had not seen in several years. Conference attendees enjoyed the long-awaited chance to participate in interesting intellectual discussions in ways more engaging than the digital interactions of the past few years may have enabled. The number of reunions—25 in total—and the number of people who attended multiple reunions is evidence of the fact that our members relished the social opportunities that come from being a part of a scientific community, experiences that many of us desperately missed during the pandemic. The 48th Annual Convention for many was a much-anticipated time to dance, to be sure. This dance could not have happened were it not for the tireless work of Dr. Maria Malott and the ABAI staff, who consistently strive for perfection and never fail to deliver when it comes to ABAI events.

The contributions of many talented behavior analysts were celebrated at the 48th Annual Convention's Opening Event and Society for the Advancement of Behavior Analysis Award Ceremony. SABA award winners included the following: Deisy de Souza (Distinguished Service); Stephen Higgins (Scientific Translation); Carbone Clinic (International Dissemination); and Drake University (Enduring Programmatic Contributions). In addition to honoring the aforementioned award recipients, the Opening Event was also a time to mourn, as we honored the many individuals in our field who passed on over the last few years\*. Taking time to recognize these individuals and reflect on their contributions as behavior analysts and humans revealed that our field would not be what it is today without each and every one of them. The longevity of

the discipline will be defined by the legacy that the friends whose passings we mourned left behind.

Coming out of the worldwide pandemic, it was inspiring to see such a myriad of presentations related to the application of behavioral principles to sociocultural challenges, including, for example, analyses of cultural practices during the pandemic. Also presented were investigations of other equally urgent areas of social concern, including human trafficking, addictions, gun violence in schools, and sustainability, among others. The conference further showcased exceedingly admirable efforts to extend the science of behavior into new domains, including public health, robotics, industry, artificial intelligence, and the study of behavioral interactions in cyberspace. Hopefully the dissemination of such work as occurred at the convention will further occasion the expansion of behavior analysis to more and more new areas of sociocultural relevance. The time is ripe for further expansion; indeed, such expansion is critical for our efforts to promote cultural well-being and resonates with the early behaviorists' hopes for the breadth and vitality of the field.

ABAI continues its DEI initiatives, including the past year's Scholarly Contributions to Diversity, Equity, and Inclusion Paper Competition. The purpose of this now two-year-old competition is to encourage, promote, and reward behavior analytic scholarship on topics and issues in DEI, both in the field of behavior analysis and more broadly. The 48th Annual Convention highlighted the work of the 2022 award winners, including Daniel Kwak and Kwang-Sun Blair (University of South Florida), whose paper was entitled "Cultural Responsiveness in Assessment, Implementer Training, and Intervention: A Systematic Review;" and Mariela Castro-Hostetler and Bethany P. Contreras (University



## In Memoriam

### 2019

Janet Ellis  
Barbara Etzel  
Howard Farris  
Charles (Chuck) Merbitz  
Murray Sidman  
William (Bill) Timberlake

### 2020

André Fleming Holland Rutherford  
Stephen (Steve) Fowler  
Dwight Harshbarger  
Victor Laties  
Jose Martinez-Diaz  
Jack Michael  
Maria Antonia Padilla Vargas  
W. David Pierce  
Joseph (Joe) Spradlin

### 2021

Robert (Bob) W. Allan  
Michael Brady  
Dale Brethower  
Paul Chance  
Michael Dougher  
Jacob (Jack) Gewirtz  
Frances G. Horowitz  
Darwin Shane Koch  
Robert (Bob) Kohlenberg  
John C. Malone  
Howard Rachlin  
Roger Ray  
Marc Richelle  
Daryl Siedentop  
João Claudio Todorov  
Jerome (Jerry) Ulman  
Michael Zeiler

### 2022

David Jarmolowicz  
John Mabry  
Hayne Reese  
Beth Sulzer-Azaroff

# 48th Annual Convention in Photos

*We captured many amazing moments from the convention in Boston and are happy to share a few of them here with you. More sights and scenes from this event can be found on the online version of Inside Behavior Analysis: <https://iba.abainternational.org/>*







entitled “Understanding the Role of Cultural Values in Applied Behavior Analysis Service Delivery from Latinx Families.” The potential for future research related to the practices of DEI in the science of behavior are limitless, and we hope to see such work submitted to the 2023 paper competition.

As disease and conflict continue to characterize our seemingly modern world, a most memorable presentation for me was the Presidential Scholar Address, which was delivered by Cynthia Fast of APOPO. Dr. Fast shared the incredibly successful research program launched in multiple countries by APOPO, in which giant pouched African rats are trained to identify, using their keen olfactory discrimination skills, tuberculosis and landmines. Dr. Fast elucidated the highly systematic teaching procedures used by APOPO to establish sophisticated repertoires of olfactory discrimination, as well as their data-driven approach to evaluating the rats’ performance. Moreover, she also shared details on the program’s successes, including the thousands of landmines and cases of tuberculosis detected by the rats to date. The implications of the program’s work for the economic development, safety, health and well-being of the communities served cannot be understated. New areas of application include teaching the rats to detect environmental pathogens and to aid in search and rescue efforts. This presentation demonstrates the impact that the science of behavior can have in humanitarian efforts, underscoring the fact that behavior scientists are prepared to rise to the challenges of our times. Through its careful efforts in research and evidence-based evaluation, APOPO is an inspiration for us all for what an effective, socially valid technology of behavior change might look like.

In my own address I outlined a research agenda for “scaled up” cultural-level applications of Relational Frame Theory and Acceptance and Commitment Training, with an eye towards the role that values play in shaping the longevity of not only our culture, but our own respective scientific community. Clarifying our own values as a field, discipline, and organization is important as our world changes and we reaffirm our commitment to contributing “to the well-being of society by developing, enhancing, and supporting the growth and vitality of the science of behavior analysis through research, education, and practice” (Association for Behavior Analysis International Communications Policy)—in other words, to the mission of ABAI and its efforts to promote the principles of our science for the betterment of society.

I look forward to seeing you in another season.



**A | B | A | I**

Association for Behavior Analysis International

# GO PLACES.

*New membership cycle begins  
September 1.*

## **LEARN**

Read leading behavior analysis publications, join live webinars, and attend events with top-tier speakers.

## **CONNECT**

Network at ABAI events and meet with experts in behavior analysis research, practice, and education.

## **INFLUENCE**

Share research and experience through presentations, posters, and journal articles.

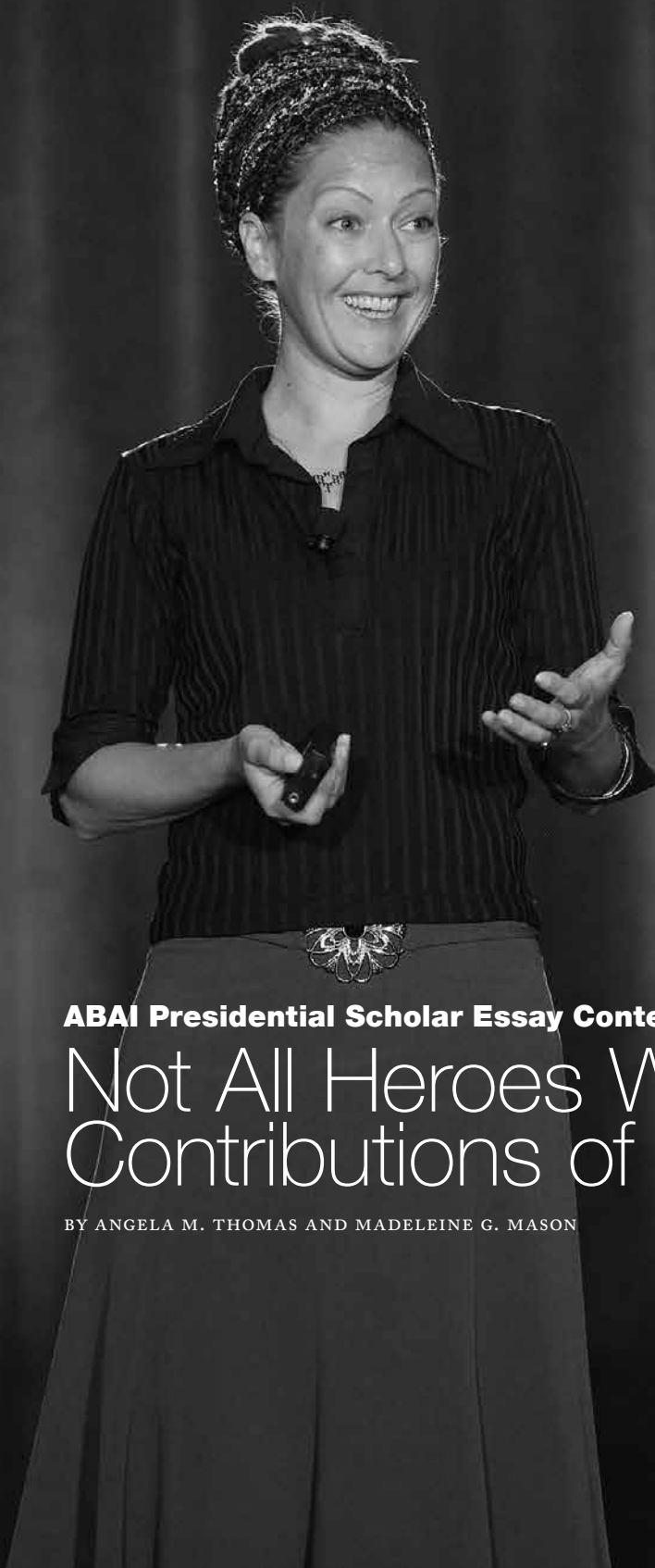
## **SAVE**

Get discounts on ABAI event registration in addition to association products and services.

## **JOIN**

[www.abainternational.org](http://www.abainternational.org)  
269-492-9310





**D**R. CYNTHIA FAST IS A POWERFUL EXAMPLE OF HOW BEHAVIOR ANALYSTS CAN, AS SKINNER URGED, “ACT TO SAVE THE WORLD” (1987). AS A DOCTORAL STUDENT AT UCLA SHE CONDUCTED RESEARCH ON RODENT COGNITION AND ASSOCIATIVE LEARNING IN PIGEONS AND HERMIT CRABS USING APPROACHES BASED IN LEARNING THEORY.

**ABAI Presidential Scholar Essay Contest:**

# Not All Heroes Wear Capes: Contributions of Dr. Cynthia Fast

BY ANGELA M. THOMAS AND MADELEINE G. MASON

Dr. Fast went on to a post-doc position at Rutgers University where her work focused on olfactory processing and neuroimaging. In 2016, her expertise in learning, olfaction, and animal behavior led her to relocate to Morogoro, Tanzania, to take on her current role as head of Training and Behavioral Research at the global non-profit organization APOPO (the Dutch acronym for Anti-Personnel Landmines Detection Product Development). The mission of APOPO is to train scent-detection animals to accomplish humanitarian goals such as safe elimination of unexploded landmines and efficient testing of sputum samples for tuberculosis (APOPO, 2022).

To accomplish these goals, Dr. Fast and the APOPO Team have successfully trained African giant pouched rats, which have an excellent sense of smell, to respond to scent stimuli. Through association of the sound of a clicker with a food reinforcer (bananas, avocados, and peanuts, for example) the rats are conditioned to discriminate between target and superfluous scents. Positive reinforcement is presented when they emit an indication response to the target scent and ignore other, non-target odors. One of the target scents is trinitrotoluene (TNT), which is present in explosive remnants of war (Poling et al., 2010). The rat is fitted with a harness that is tethered to a guideline, each end held by a handler, allowing the animal to 'walk a grid' between handlers. When the rat detects TNT, it scratches at the earth. The handlers then mark the location for further inspection by demining personnel. A HeroRAT team can inspect an area the size of a tennis court in less than an hour – a feat which might take up to four days to complete with a metal detector – because the rats aren't slowed down by false-positives from scrap metal. Though they may weigh as much as five pounds when fully grown, they are too light to activate the pressure-sensitive trigger. Once declared safe, cleared areas can once again be used by local communities. Through partnership with APOPO the country of Mozambique was declared free of all known land mines in 2015 (Morley, 2015).

Using a similar training framework, HeroRATs are also being utilized as a second-line testing technology in the fight against pulmonary tuberculosis (TB) (Fiebig et al., 2020). With approximately 10 million new cases globally each year, TB is the second leading cause of death by infectious disease behind COVID-19 (Zenner, 2021). Like COVID, TB is spread through infectious aerosol droplets. Diagnosis of active pulmonary TB is made through a culture process which takes weeks. HeroRATs are trained to detect TB-positive sputum samples much more rapidly by scent alone. APOPO estimates that their partnership with clinics has raised TB detection rates by 40% (Mgode et al., 2018).

Dr. Fast's team is also working to increase the efficiency of HeroRATs' scent detection training by including multiple target odors simultaneously in discrimination

training (Webb et al., 2020). This work has yielded promising results suggesting that pouched rats can acquire five odor discriminations concurrently in fewer training sessions than currently working HeroRATs required to master detection of a single odor. This research has the potential to reduce the time, money, and other resources needed to achieve APOPO's stringent standards of mastery, thereby enabling HeroRATs to do more of their life-saving work.

Of course, the rats are only able to do their work thanks to skilled human trainers and handlers. Thus, Dr. Fast and her team have also taken up research on maximizing trainers' fidelity using behavioral skills training (BST), an empirically supported training strategy consisting of instruction, modeling, rehearsal, and feedback (Lewon et al., 2019). BST is provided to ensure trainers implement reinforcement procedures and collect data as specified by the training protocol, which has resulted in more reliable data on rats' performance. Dr. Fast and her team are also looking ahead to other humanitarian issues in which HeroRATs can contribute to low-cost solutions, including detection of illegally trafficked animals and wildlife products.

The work of APOPO is a real-world embodiment of how the principles of behavior analysis can be utilized to affect positive and far-reaching changes. Thank you, Dr. Fast, for your work developing and implementing these training techniques, and for being a such a wonderful exemplar in our field. We are excited to see the future you help shape. ❖

## References

- APOPO. (2022). We save lives by training animals to rid the world of landmines and tuberculosis. *APOPO*. Retrieved March 30, 2022, from <https://www.apopo.org/en>
- Fiebig, L., Beyene, N., Burny, R., Fast, C., Cox, C., & Mgode, G. (2020). From pests to tests: training rats to diagnose tuberculosis. *European Respiratory Journal*, 55(3), 1-5. doi:10.1183/13993003.02243-2019.
- Lewon, M., Webb, E., Brotheridge, S., Cox, C., & Fast, C. (2019). Behavioral skills training in scent detection research: Interactions between trainer and animal behavior. *Journal of Applied Behavior Analysis*, 52(3), 682-700. doi:10.1002/jaba.566.
- Mgode, G. F., Cox, C. L., Mwimanzu, S., & Mulder, C. (2018). Pediatric tuberculosis detection using trained African giant pouched rats. *Pediatric Research*, 84(1), 99-103. doi:10.1038/pr.2018.40
- Morley, J. (2015). Mozambique declared free of landmines. *Arms Control Today*, 45(8), 5.
- Poling, A., Weetjens, B. J., Cox, C., Beyene, N., Bach, H., & Sully, A. (2010). Teaching giant African pouched rats to find landmines: Operant conditioning with real consequences. *Behavior Analysis in Practice*, 3(2), 19-25. doi:10.1007/BF03391761
- Skinner, B. F. (1987). *Upon Further Reflection*. Prentice Hall.
- Webb, E., Saccardo, C., Poling, A., Cox, C., & Fast, C. (2020). Rapidly training African giant pouched rats (*Cricetomys ansorgei*) with multiple targets for scent detection. *Behavioural Processes*, 174, 104085. doi:10.1016/j.beproc.2020.104085.
- Zenner, D. (2021). Time to regain lost ground: Tuberculosis in the COVID-19 era. *Eurosurveillance*, 26(24), 2100564. doi: 10.2807/1560-7917.ES.2021.26.24.2100564

# 2022 OUTSTANDING MENTOR AWARDS



**Daniel M. Fienup**

**Daniel M. Fienup**, Ph.D., BCBA-D, is an associate professor of applied behavior analysis at Teachers College, Columbia University. He received his Master's in Applied Behavior Analysis from Southern Illinois University and his Ph.D. in School Psychology from Illinois State University. Dr. Fienup and his students conduct research on instructional design and educational performance. Dr. Fienup has published numerous articles in behavior analytic journals. He is an incoming associate editor for the *Journal of Applied Behavior Analysis* and former associate editor for the *Journal of Behavioral Education* and *The Analysis of Verbal Behavior*. He also serves on the editorial board for the *Journal of the Experimental Analysis of Behavior*, *Behavior Analysis in Practice*, *Behavior Analysis: Research and Practice*, *Journal of Developmental and Physical Disabilities*, and *Behavior Development*. He serves on the Licensed Behavior Analyst New York state board and is a past board member of the New York State Association for Behavior Analysis.



**T. V. (Joe) Layng**

**T. V. (Joe) Layng** has over 50 years of experience in the experimental and applied analysis of behavior with a particular focus on the design of teaching/learning environments. He earned a Ph.D. in behavioral sciences (biopsychology) at the University of Chicago. At Chicago, working with pigeons, he investigated animal models of psychopathology. Also working with pigeons, Joe collaborated with Paul Andronis and Israel Goldiamond on investigating the production of untrained recombinant, complex symbolic repertoires in pigeons from simpler behavioral components, a process they described as contingency adduction. Joe has extensive clinical behavior analysis experience with a focus on ambulatory schizophrenia, especially the systemic as well as topical treatment of delusional



**Raymond G. Miltenberger**

speech and hallucinatory behavior. In 1999, he co-founded Headsprout where Joe led the scientific team that developed the technology that formed the basis of the company's patented Early Reading and Reading Comprehension online reading programs used by millions of children, for which he was the chief architect. Joe has spent the last several years mentoring students, interested investigators, and practitioners in nonlinear contingency analysis. He coauthored the recent book *Nonlinear Contingency Analysis: Going Beyond Cognition and Behavior in Clinical Practice*.

**Raymond G. Miltenberger**, Ph.D., BCBA-D, is a professor of child and family studies and the director of the Applied Behavior Analysis Program at the University of South Florida. He received his PhD in Clinical Psychology from Western Michigan University after completing a clinical internship at the Kennedy Institute at Johns Hopkins University School of Medicine. He was a Professor of Psychology at North Dakota State University from 1985 to 2006. He is a Fellow and Past President of the Association for Behavior Analysis International (ABAI) and a Fellow of the American Association for Advancement of Science. His current research focuses on behavioral approaches for teaching safety skills, increasing physical activity for health promotion, and enhancing sports performance. He has published over 250 journal articles and chapters and has written a behavior modification textbook, now in its sixth edition and published in six languages. Dr. Miltenberger has received numerous teaching and research awards including the APA Division 25 Award for Distinguished Contributions to Applied Behavioral Research, the ABAI Outstanding Mentorship Award, and the FABA Award for Outstanding Contributions to Behavior Analysis.

**Jessica E. Van Stratton** is an associate professor of psychology at Western Michigan University (WMU) and is the chair of the behavior analysis program. She earned her Ph.D. in disability disciplines with a focus in applied behavior analysis from Utah State University in 2009, her MA from The Ohio State University in 2003 in special education/applied behavior analysis, and her BS in psychology from Allegheny College in 2001. Jessica has the honor of working with undergraduate, masters, and doctoral students at WMU through courses, fieldwork, teaching, research, applied projects, student organizations, and community volunteer and activism work. Currently, Jessica and her students lead a number of collaborative projects in school settings. These range from applications focused on catching elementary students up who are behind in math in underserved communities with a focus on frequency building to skills coaching for students with exceptional needs to help facilitate gaining and maintaining paid employment in the community. Jessica's passion for working with students of all ages, abilities, and backgrounds helps her continue to learn and grow, and helps her to be a better teacher, researcher, and mentor.

**Valerie M. Volkert, Ph.D., BCBA-D**, associate professor (pediatrics), is a psychologist program manager in the Children's Multidisciplinary Feeding Program at Marcus Autism Center. She received her doctorate in school psychology from Louisiana State University in 2007. She was previously faculty at the Munroe-Meyer Institute, and adjunct faculty at the University of Nebraska at Omaha, where she became the training director for the Applied Behavior

Analysis Ph.D. Program and Center for Autism Spectrum Disorders. In 2015, Dr. Volkert joined the Marcus Autism Center. She sees patients in intensive day treatment and outpatient at the Feeding Program, supervises interns and residents, and pursues lines of clinical research. Of particular interest are treatments to address Avoidant and Restrictive Food Intake Disorder and increase advanced feeding skills (e.g., chewing). She has authored four book chapters and published 41 peer-reviewed research studies in multiple journals, including the *Journal of Applied Behavior Analysis*, *the Journal of Pediatrics*, *Research in Developmental Disabilities*, *Behavior Modification*, and *Behavior Analysis in Practice*. Dr. Volkert serves currently serves on the board of editors for two journals and as associate editor for the *Journal of Applied Behavior Analysis*.



Jessica E. Van Stratton



Valerie M. Volkert





This Changes Everything

**deTASO** *deTASO's Applied Behavior Analysis Solution*

deTASO's ABA application is built specifically for ABA providers and includes these features:

- Mobile Web solution that works on any device
- BIP Management
- Payroll & Complex Billing
- Graphing Functionality & Reporting Capabilities
- Parent Training

*Learn More Here*

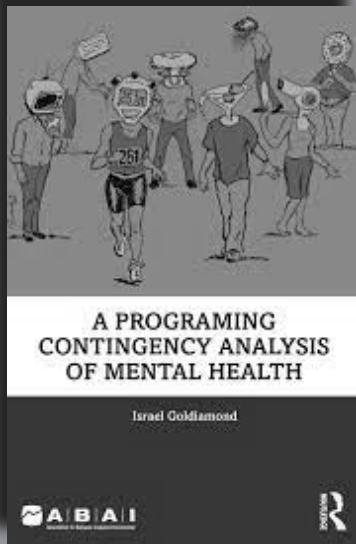




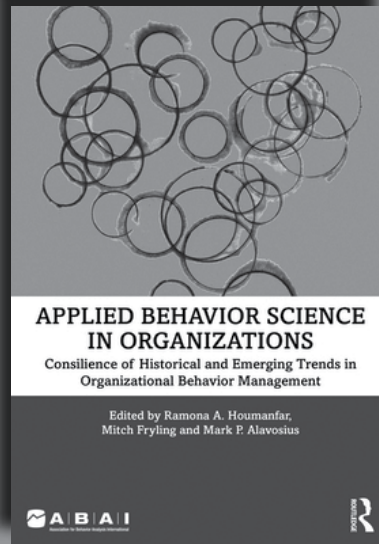
# A | B | A | I

Association for Behavior Analysis International

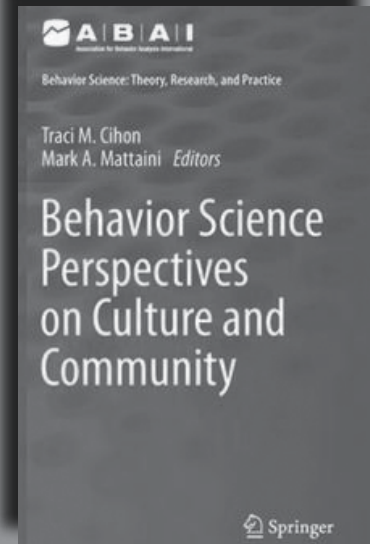
## *Behavior Science: Theory, Research, and Practice* BOOK SERIES



*A Programing Contingency Analysis of Mental Health* presents Dr. Israel Goldiamond's reflections on various ways we formulate behavioral and emotional problems, most often in traditional terms of mental health disorders, mental diseases or illnesses, psychopathological disorders, and so on—what he calls a pathological orientation. Here, Goldiamond argues for a groundbreaking alternative view from the vantage point of radical behaviorism.



*Applied Behavior Science in Organizations* provides a compelling overview of the history of organizational behavior management (OBM) and the opportunity it presents for designing and managing positive work environments that can in turn have a positive impact on society. The book brings together leading experts from industry and research settings to provide an overview of the historical approaches in Organizational Behavior Management.



All science proceeds by progressively building on the work of others, while remaining open to new findings and challenging existing conceptual frameworks. This textbook presents the scientifically rigorous work in the last decades that has taken a behavior analytic perspective on larger social and cultural processes, with the eye to potential for contributions to address social and cultural issues. The book presents multiple intersecting perspectives intended for the use and application by graduate-level behavior analysis students.

*Learn more and order at*  
[www.abainternational.org/Shopping/Group-Listing.aspx?intgrpkey=195](http://www.abainternational.org/Shopping/Group-Listing.aspx?intgrpkey=195)



# SAVE THE DATE!

49th ANNUAL CONVENTION

Colorado Convention Center

*Pre-Convention workshops:* Thursday, May 25–Friday, May 26

*Convention:* Saturday, May 27–Monday, May 29

# DENVER



# 2022

## **Scholarly Contributions to Diversity, Equity, and Inclusion**

The Scholarly Contributions to Diversity, Equity, and Inclusion (DEI) Paper Competition was designed to encourage, promote, and reward behavior analytic scholarship on topics and issues in DEI, both in the field of behavior analysis and more broadly.

Students (graduate or undergraduate) and post-graduate professionals who have completed empirical or conceptual papers relevant to DEI that are informed, at least in part, by a behavior analytic perspective are invited to submit. The 2023 competition will begin accepting applications on September 1, 2022. Additional details may be found on the DEI Board website.

The second year of the competition received 10 applications. The winning papers (one in the student category and one in the professional category) are listed below.

## Student Category

### **Cultural Responsiveness in Assessment, Implementer Training, and Intervention: A Systematic Review**

BY DANIEL KWAK AND KWANG-SUN BLAIR (UNIVERSITY OF SOUTH FLORIDA)

**Abstract:** This systematic review consists of 22 peer-reviewed single subject and group design studies that used culturally responsive assessment, implementer training, and intervention to yield positive outcomes for children and adolescents from diverse cultural backgrounds. The studies were published across 15 journals (2010–2021) and included at least 281 implementers and 536 service recipients. The review identified culturally responsive interventions targeting behavioral, social skills, academic, and social-emotional outcomes. Results indicated that most studies considered race, ethnicity, nationality, or language for cultural adaptations in assessment, implementer training, and intervention and addressed the specific culturally sensitive elements suggested by the Ecological Validity Model to some degree. The studies addressed cultural responsiveness in conducting research suggested in the literature, mostly in the area of problem formulation; scant research adequately addressed cultural responsiveness in the area of dissemination. Recommendations, implications, and directions for future research and behavior-analytic practices are discussed.

## Professional Category

### **Understanding the Role of Cultural Values in Applied Behavior Analysis Service Delivery From Latinx Families**

BY MARIELA CASTRO-HOSTETLER AND BETHANY P. CONTRERAS (UNIVERSITY OF NEVADA, RENO)

**Abstract:** The aim of this study was to identify and learn about the cultural values and beliefs held by Latinx families in Nevada. In addition, we also examined barriers faced by Latinx families when accessing ABA services. In Study 1, we distributed the Participant Demographic and Experience Survey to Latinx families who were currently

receiving ABA services or had received services in the past. The survey included questions about the family's cultural identity, their primary language spoken in the home, and parent educational level. The second part of the questionnaire asked the parents to share their experiences in receiving ABA services and the extent to which those services were received. In Study 2, we conducted structured interviews and focus groups with some of the families who participated in Study 1. From the structured interviews and focus groups, we identified four main themes: (1) family and cultural values; (2) reaction of receiving a diagnosis; (3) impact of ABA services (4) future recommendations for the field of ABA. From these themes, we found what aspects were meaningful in receiving ABA services, as well as barriers that families faced when seeking services.

### **2022 Award for Distinguished Contributions to DEI Equitable Supervision Practices**

RECEIVED BY BLACK APPLIED BEHAVIOR ANALYSTS

**Abstract:** The Behavior Analyst Certification Board (BACB) demographic data reports that approximately 40% of the certificants are Black, Indigenous, or People of Color (BIPOC) individuals. The BACB has added items to support equitable supervision practices which will come into effect in 2025 under the 6th edition task list. One of the new task list items specifies that supervisors are required to identify and implement methods that promote equity in supervision practices. BIPOC individuals are especially at risk of being affected by inequitable supervision practices given much of the behavior analytic leadership is White and may not have previously had training on appropriate strategies that will reduce these inequities for BIPOC supervisees. The mission of BABA is to create a safe community to support, encourage and uplift Black professionals in the field of Applied Behavior Analysis. Since BABA's inception, our focus has been to shed light on the inequities that have marginalized our community for far too long while creating opportunities for growth, advancement and leadership for clinicians of color. It is vital that the responsibility of cultural responsiveness is shared by the field of ABA in its entirety. Thus, the purpose of this presentation will be to discuss how current supervisor practices could contribute to inequities, identify common barriers in supervisor practices, and provide some examples of solutions which could promote equitable supervision practices.

2022

ABAI is proud to announce the 2022 Fellows of the Association for Behavior Analysis International.

## FELLOWS OF ABAI



Erik Arntzen

Dr. Erik Arntzen received his Ph.D. from University of Oslo, Norway. Arntzen's dissertation was focusing on variables influencing responding in accord with stimulus equivalence. He also holds a degree in clinical psychology. He is currently professor in behavior analysis at Oslo Metropolitan University (OsloMET). His research contributions include both basic and applied behavior analysis, with an emphasis on research in relational stimulus control and verbal behavior. Lately, he has started a research project with focus on remembering functions in patients

with dementia. He has also been interested in ethical considerations and core values in the field of behavior analysis. Furthermore, he has research projects within the areas of gambling behavior and consumer behavior. Dr. Arntzen has published papers in a number of different journals including *Journal of Applied Behavior Analysis (JABA)*, *The Psychological Record*, *Behavioral Interventions*, *European Journal of Behavior Analysis (EJOBA)*, *Experimental of Analysis of Human Behavior Bulletin*, *Analysis of Gambling Behavior*, *The Analysis of Verbal Behavior*, *American Journal of Alzheimer's Disease & Other Dementias*, and *Psychopharmacology*. Dr. Arntzen is the past-president of the European ABA and he is also the secretary of international affairs in the board of the Norwegian Association for Behavior Analysis. He has presented papers at conferences world-wide. Dr. Arntzen is one of founders and also the present editor-in-chief of *European Journal of Behavior Analysis*. He has served on the editorials board of several journals, including the *Journal of Applied Behavior Analysis*, *The Psychological Record*, *International Journal of Psychology and Psychological Therapy*, and *The Behavior Analyst Today*.



Steven R. Hursh

Dr. Steven R. Hursh received his BA from Wake Forest University in 1968 and his Ph.D. from the University of California, San Diego in 1972. He is the president of the Institutes

for Behavior Resources and adjunct professor of Behavioral Biology at Johns Hopkins University School of Medicine. Dr. Hursh has over 40 years' experience as a researcher and is author of over 80 articles, book chapters, and books. He is a former associate editor of the *Journal of the Experimental Analysis of Behavior*. His seminal article on economic concepts for the analysis of behavior is considered one of the most significant articles in the history of the journal. Dr. Hursh has been a key figure in the establishment of behavioral economics as a major conceptual area. His research papers have introduced into the behavioral vocabulary a number of "household terms" in behavioral psychology: open and closed economies, demand curves and demand elasticity, unit price, substitution and complementarity, Pmax, Omax, and recently essential value based on exponential demand that has broad generality across species and reinforcers. His extensions to drug abuse and the framing of drug abuse policy have had a major impact on the direction of research on substance use disorders.

Professor Mickey Keenan, BCBA-D, is a fellow of the British Psychological Society, a distinguished community fellow at the School of Psychology, Ulster University in Northern Ireland, and a trustee of the Cambridge Center for Behavioral Studies. He is founder of the charity PEAT (Parents' Education as Autism Therapists; [www.peatni.org](http://www.peatni.org)). He has received numerous awards for his untiring efforts to bring applied behavior analysis to communities in Ireland and further afield. He has received the Award for Promoting Equality of Opportunity from the British Psychological Society, a Personal Achievement Award from the New York State Association for Behavior Analysis, Award for Public Service in Behavior Analysis from the Society for Advancement of Behavior Analysis (presented in Chicago, May 2008),



Mickey Keenan

## Designation as Fellow of ABAI

The purpose of the ABAI Fellow designation is to recognize outstanding contributors to behavior analysis in one of the primary areas of (a) scholarly research, (b) professional practice, or (c) teaching/administration/service or any combination of (a), (b), and (c).

- Only full members of ABAI are eligible to be named Fellows.
- The nominee must have a documented record of sustained and excellent contributions in one or more primary areas. An aggregate of contributions across the three areas may also make an individual eligible.
- Nominations are only accepted from current Fellows of ABAI, each of whom may make a single nomination per year, and the nominator will solicit a second letter of support from another Fellow.

and the Michael Hemingway Award from the Behavior Analyst Certification Board (presented in New Orleans, March 2014). With his wife, Professor Karola Dillenburger, he produced the first multimedia textbook in behavior analysis, *Behaviour Analysis: A Primer*, available on iTunes bookstore for Mac platform.

**Dr. Julie S. Vargas** taught elementary school before getting her doctoral degree in educational research. As a faculty member at West Virginia University from 1966 to 2004, she worked with prospective and practicing teachers. She published three books on designing contingencies to improve education. In 1989, Professor Vargas helped found the B. F. Skinner Foundation named after her father. She was its president until 2020, and is currently Chair of the Board. In 2004, she moved with her husband to Cambridge, Massachusetts.



**Julie S. Vargas**

BEHAVIOR ANALYSIS  
OPPORTUNITIES BY

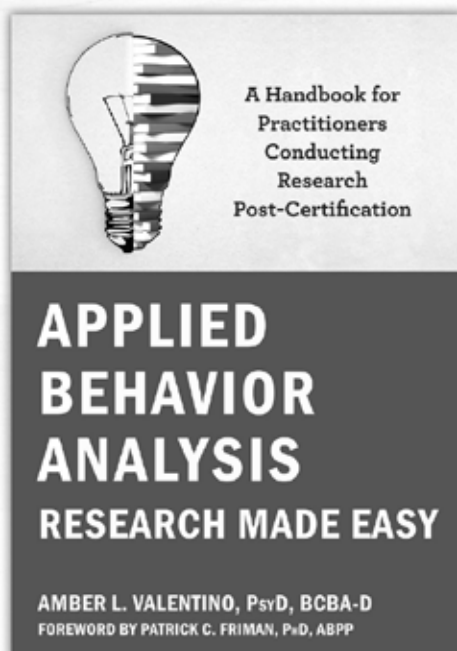
**BCBA<sub>s</sub>,**  
**FOR**  
**BCBA<sub>s</sub>.**



**Ready to apply?**  
**Visit**  
**TeamPBS.com**  
**today!**

# ESSENTIAL RESOURCES *for* YOUR PRACTICE

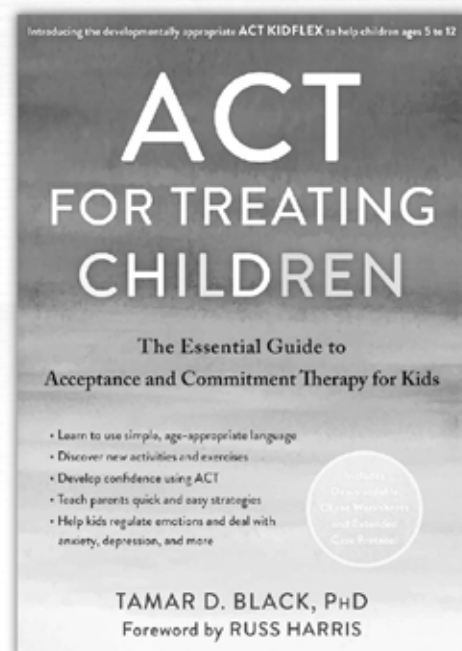
Our evidence-based books provide powerful tools  
for improving treatment outcomes



ISBN: 978-1684037827 | US \$59.95

“A long-overdue resource  
that is going to be useful for just  
about any practitioner who  
cares about science.”


—Jonathan Tarbox, PhD, BCBA, director of the master of  
science in ABA program at the University of Southern California



ISBN: 978-1684039760 | US \$54.95

“A beautifully written and  
comprehensive book that addresses  
every aspect of the use of ACT  
methods with children.”

—Steven C. Hayes, PhD, originator of acceptance and  
commitment therapy

 newharbingerpublications

1-800-748-6273 | [newharbinger.com](http://newharbinger.com)

Learn more about evidence-based continuing  
education and training with

 PRAXIS [praxiscet.com](http://praxiscet.com)

CLINICIANS  
CLUB 

 newharbingerpublications

Join today for 35% off professional books,  
free e-books, client resources, and more at

[newharbinger.com/clinicians-club](http://newharbinger.com/clinicians-club)

# CONFERENCE PREVIEW

E L E V E N T H   I N T E R N A T I O N A L   C O N F E R E N C E

# dublin<sup>2022</sup> I R E L A N D

Join us in Dublin for engaging invited presenters, cross-disciplinary presentations and posters, and networking opportunities with international colleagues. Dublin offers a fascinating mix of historic venues including Medieval crypts, 17th century theatres, castles, Georgian townhouses, libraries, and old military hospitals. Please save the dates and join us in this historic city!

The conference will feature over 135 hours of programming, including 15 invited sessions. See the following pages for an overview of the invited track. Registration and additional program details can be found at [www.abainternational.org/events/international/dublin-2022/conference-home.aspx](http://www.abainternational.org/events/international/dublin-2022/conference-home.aspx)

# Invited Events

## Autism

**How Applied Behaviour Analysis May Benefit From a Taxonomy of Science Communication Aims**



**Olive Healy**  
Trinity College Dublin  
Friday, Sept. 2  
8:00 am

**Community, Social, and Sustainability Issues Using Behaviour Analysis and Behavioural Economics to Frame Messages Effectively**



**Louise A. McHugh**  
University College Dublin  
Friday, Sept. 2  
11:30 am

**PANEL: Issues, Practices, and Tips for Publishing in Behavior Analytic Journals**



**Erik Arntzen**  
Oslo Metropolitan University



**Mark Galizio**  
University of North Carolina Wilmington

**On the Ethics of Treating Automatically Reinforced Behavior: Self-Injurious Behavior and Stereotypy**



**William Ahearn**  
New England Center for Children  
Friday, Sept. 2  
2:00 pm

**How to Develop Basic Knowledge About Behavior-Based Safety Through Its Application at a National and International Level**



**Fabio Tosolin**  
Association for the Advancement of Radical Behavior Analysis  
Saturday, Sept. 3  
8:00 am



**Stephanie M. Peterson**  
Western Michigan University  
Saturday, Sept. 3  
11:30 am

**Behavioral Pharmacology and Neuroscience Using Behavior Analysis to Understand the Links Between Genetics and Behavior**



**Suzanne Mitchell**  
Oregon Health & Science University  
Friday, Sept. 2  
4:00 pm

**SYMPOSIUM: Positive Behaviour Support in Applied Settings**



**Christopher J. Seel**  
University of South Wales



**Maggie Hoerger**  
Bangor University  
Saturday, Sept. 3  
11:00 am

## Experimental Analysis of Behavior

### How to Use “Implicit Tests” in Behavior Analysis Without the Smoke and Mirrors



**Bryan T. Roche**  
National University of  
Ireland, Maynooth  
Friday, Sept. 2  
10:30 am

### Induction, Reinforcement, and Their Contribution to Behavioral Excess



**Ricardo Pellon**  
Universidad Nacional  
de Educacion a  
Distancia  
Saturday, Sept. 3  
10:30 am

### SYMPOSIUM: A Class of One: Remembering Murray Sidman, His Contributions, and His Legacy



**Julio de Rose**  
Universidade Federal  
de Sao Carlos



**Paula Kenyon**  
Trumpet Behavioral  
Health



**William J. McIlvane**  
University of  
Massachusetts  
Medical School  
Saturday, Sept. 3  
3:00 pm

### PANEL: Behavior Analysts Playing Well With Others: Challenges and Successes in Extending Bridges to Other Disciplines



**Pauline Horne**  
Bangor University



**Suzanne H.  
Mitchell**  
Oregon Health &  
Science University



**Kathryn Saunders**  
University of Kansas  
Saturday, Sept. 3  
5:00 pm

## Education

### WORKSHOP: Using Precision Teaching to Ensure Fluency of Key Academic Skills: Introduction to and Refresher of Strategies and Techniques



**Claire E. McDowell**  
Ulster University,  
Coleraine



**Catherine Storey**  
Queen's University  
Belfast  
Thursday, Sept. 1  
1:00 pm

### Phonological Abstraction is a Critical Prereading Skill—Without it, Learning to Decode (“Sound Out”) Untaught Words is Severely Compromised



**Kathryn Saunders**  
University of Kansas  
Friday, Sept. 2  
3:00 pm

## Organizational Behavior Management

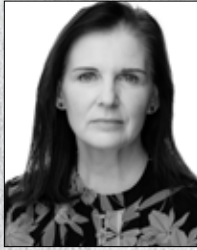
### Value Driven Cultural Change



**Ramona  
Houmanfar**  
University of Nevada,  
Reno  
Friday, Sept. 2  
9:00 am

## Philosophical, Conceptual, and Historical Issues

### **WORKSHOP: Process-Based Behavior Therapy: Why a New Behavior Therapy Was Needed**



**Yvonne Barnes-  
Holmes**  
Ghent University  
Thursday, Sept. 1  
1:00 pm

### **PANEL: International Credentialing and Education Discussion**

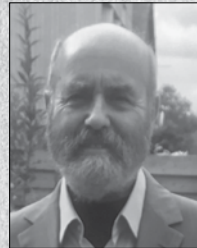


**Jenna Mrijak**  
Association for  
Behavior Analysis  
International



**Maggie Hoerger**  
Bangor University  
Thursday, Sept. 1  
5:40 pm

### **Time as a Problem for Behaviour Analysis....And for Everyone Else as Well**



**John Wearden**  
Keele University  
Saturday, Sept. 3  
9:00 am

## Dublin Area Tours

The Dublin area offer several fun and informative tours for members when they need to unwind and explore after a busy day of conference sessions. Included below are just few examples of what there is to do while in Ireland.

### **Secret Food Tours: Dublin**

Book a 3-hour guided tour through Dublin's most iconic food locations. Enjoy a variety of local Irish favorites. ABAI conference attendees can use the code **SFT10** when checking-out online to enjoy a discounted tour price.

### **Guinness Storehouse & Jameson Irish Whiskey Experience Tour**

ABAI conference attendees can use the code **ABAI2022** to enjoy a discounted tour price. This Irish experience tour is a top attraction double header—offering the opportunity to combine two of Ireland's top attractions with fast-track entrance to both the Guinness Storehouse and to Ireland's premier whiskey attraction: The Jameson Whiskey Distillery Bow Street.

### **History Tours Through Unearthed Tours Dublin**

If you're looking for some fun and entertaining tours with a bunch of locals, then you're covered with Unearthed Tours Dublin, which offers tours ranging from cultural and historic to dark and gruesome!

### **Big Bus Tours: Dublin**

Enjoy a tour of historic Dublin on a massive double decker bus! A 10% discount is available for ABAI conference attendees.

### **Gallery Crawl Tour**

Sign up for this free tour! You'll be taken to several different galleries in the city center to explore the art scene in Dublin. On this tour, you will visit a variety of gallery types—from established, popular spots to smaller, lesser-known spaces.

### **Alternative Tour**

Another free tour! Explore the alternative side to Dublin: Check out a chocolate factory, fruit market, hidden bar, time house, art gallery, and many more unique places within the city.

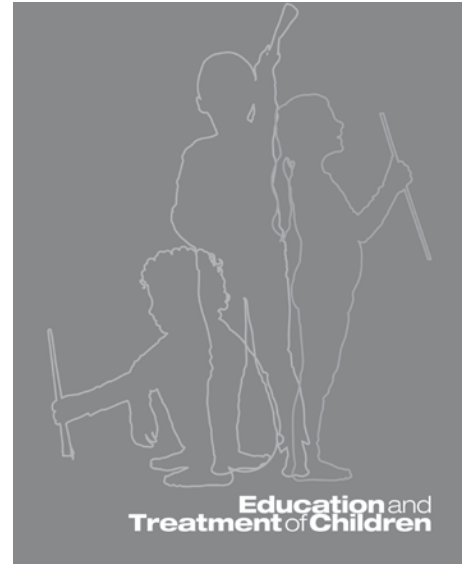
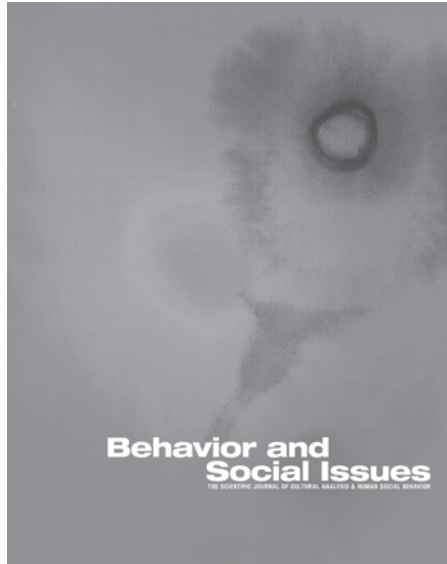
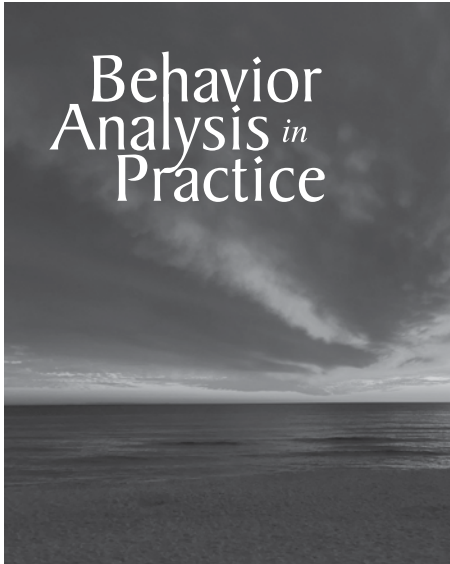
### **Music of Dublin Tour**

Discover the music and sounds of Dublin on a guided tour through the city center. Your guide will bring you to over 10 locations across Dublin and give you an insight into the Dublin's music scene and its history.

**For booking, plus addition offering and information, visit:**

[www.abainternational.org/events/international/dublin-2022/discounts](http://www.abainternational.org/events/international/dublin-2022/discounts)

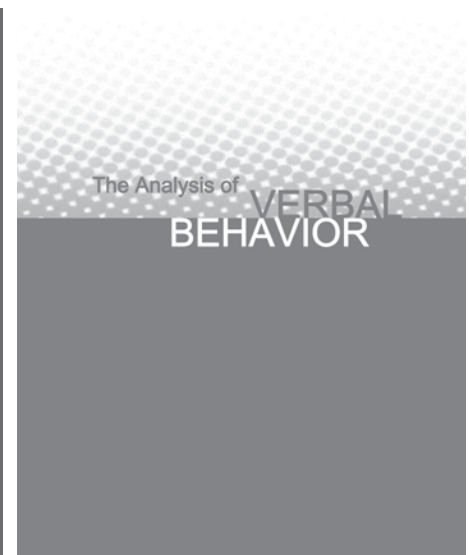
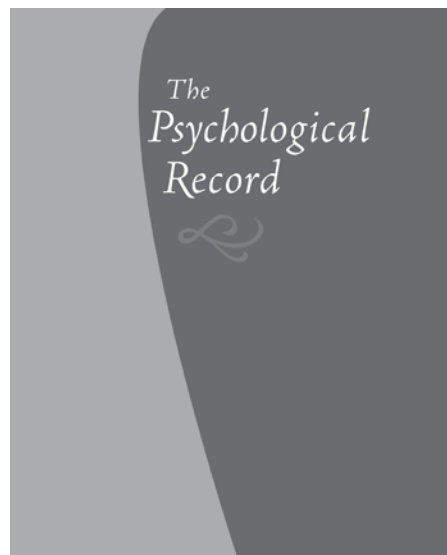
# ABAI Journals



ABAI's journals are the best sources for articles on new research; theoretical, experimental, and applied topics; behaviorism as a philosophy; translational studies; empirically validated best practices; re-interpretations of published data; investigations of basic behavioral processes; and literature reviews.

Visit **[www.abainternational.org/journals.aspx](http://www.abainternational.org/journals.aspx)** to learn more and subscribe.

ABAI members get 50% off all subscriptions!



# Acceptance and Commitment Training

BY ANGELA COREIL

The mission of the ACT SIG is to create a platform in which professionals can engage to learn, explore, and disseminate how behavior analysis and ACT (be it “Training” or “Therapy”) can be developed across a diversity of domains, modalities, and populations to better serve the world with our science.

Our SIG objectives include: 1) Develop clarity around the intersection in scopes of practice and competency with ACT and behavior analysis, 2) Provide a community offering mentorship, trainings, and other resources to help practitioners understand how ACT can fit into their practice, 3) Identify action steps for membership to take toward a broader understanding of complexities in behavior, 4) Facilitate interactions between adjacent SIGs and other external groups to facilitate behavior analysis of complex events and reduction of suffering, 5) Facilitate exploration of ACT-adjacent and other relevant behavior analytic approaches to fostering psychological flexibility, and 6) Support members in conducting behavior analytic research on ACT, psychological flexibility, and related processes.

The ACT SIG of ABAI is a fairly new SIG. We have worked throughout the pandemic to develop membership, organization of the SIG, and to establish effective modes of communication with our membership. We now have a website at [www.abaiactsig.com](http://www.abaiactsig.com) where resources can be added for our membership. We also have a mailing list and will be sending out materials and updates to our members through this.

We hope that you will join the ABAI ACT SIG and explore how verbal symbolic relating may influence and improve your current practice.

## Addiction

BY JESSE DALLERY

The Addiction SIG was founded to expand training, research, and employment opportunities for behavior analysts. The SIG provides a forum for all persons who have an interest in studying and applying behavior analysis to understand, prevent, and treat addiction. This may include addiction to drugs and other commodities (e.g., alcohol, nicotine, stimulants, opioids, internet, smartphones, food, gambling) and associated psychosocial problems (e.g., psychiatric comorbidities, unemployment, poverty).

In the past year, the Addiction SIG focused on maintaining the necessary infrastructure to support SIG activities. We conducted SIG leadership meetings. We also expanded our digital presence from Facebook to include Instagram and Twitter. Our current membership

consists of 148 members, with approximately 3-6 new members each month. The focus at the business meeting last year was to provide an overview of the SIG’s mission, increase SIG membership, and encourage feedback on ongoing and future activities of the SIG.

In the coming year, the Addiction SIG will continue to focus on several goals. The SIG will: (1) serve as a professional and scientific networking group for its members; (2) focus on growing its presence and interaction on social media; (3) continue to recruit new members; (4) promote submission of addiction-related symposia, panel sessions, posters, and papers for ABAI and highlight upcoming relevant presentations; and (5) expand the resources available to its members. In sum, the SIG aims to pursue several activities that will make membership in the Addiction SIG as beneficial as possible.

Membership in the Addiction SIG is open to all individuals who are interested in the SIG’s aim, mission, or objectives. The SIG’s members need not be members of ABAI. Membership is currently free. If you would like to become a member, please join via our Facebook page: [www.facebook.com/AddictionSIG](https://www.facebook.com/AddictionSIG)

## Applied Animal Behavior

BY LAURA PERKINS, ERICA FEUERBACHER, AND KIMBERLY TRUONG

The mission of the Applied Animal Behavior SIG is to promote applied animal behavior analytic research, set high standards in methods and techniques of animal training, support those in the applied animal behavior field, and promote the well-being of animals in applied settings wherever they are found.

Throughout 2021, the SIG worked to provide some new opportunities for members.

We offered our first CEU event; a virtual panel discussion on how to get started in the field of applied animal behavior. The event was recorded and will serve as a resource for members going forward.

Throughout the year we also hosted several virtual chats, open to members and non-members, to connect with each other and exchange ideas.

We are developing a new experts directory for members. This directory will serve to connect members who are new to applied animal behavior or new to a specialty within AAB with experts in that specialty.

Each year the SIG offers an annual student research award in honor of Marian Breland Bailey. This year (2022) we added a Diversity Award as well. Both of these awards were presented at the SIG meeting at ABAI Boston.

The 2022 winners for the Marian Breland Bailey award were Megan McKellar (Graduate Student Recipient) and Jackie Oh (Undergraduate Student Recipient).

Our B. F. Skinner Lecture Series invited speaker was Paul McGreevy with the paper session “Equitation Science and the 5-4-3-2-1 Framework for Ethical Animal Training” (#194).

The Invited Paper Session speakers were Katie Kalafut and Alexandra Protopopova. Katie Kalafut’s paper session was “Using Technology to Extend the Collection and Use of Behavioral Data in Applied Settings” (#106). Alexandra Protopopova’s paper session was “Feeding Two Birds With One Scone: Connecting Animal Welfare Concepts With Behaviour Analysis” (#292).

While in Boston, SIG members took a field trip to tour the MSPCA with SIG member Terri Bright as our guide and hostess.

We look forward to continuing to serve our members and pursue our mission through the 2022-2023 year.

## Autism

BY JUSTIN B. LEAF

It has been an exciting year for the Autism Special Interest Group (SIG). Within the past year we have added a new member to the Autism Sig Executive Council: Julia Ferguson. The Autism SIG Executive Council consists of Justin B. Leaf (president), Robert Ross (past president), Joe Cihon (secretary-treasurer), Mary Jane Weiss (board member-elect), Ian Melton (board member-elect), Brittany Melton (board member-elect), and Julia Ferguson (board member-elect). Throughout the year members of the Autism Sig have worked on numerous papers and committees to help disseminate the benefit of quality behavioral intervention as it relates to autistic/individuals diagnosed with ASD. Further, members of the Autism Sig have worked tirelessly to provide consumers and professionals resources concerning misinformation about Applied Behavior Analysis.

We hope to continue to be productive and have several goals in the upcoming year. One of our main goals is to start publishing articles in response to misinformation about Applied Behavior Analysis. Our second goal is to continue to promote quality and progressive behavioral intervention. Finally, we look forward to continually working closely with ABAI and the ABAI autism conference. We are optimistic that engaging in all of these activities will result in the improvement of behavioral intervention for individuals diagnosed with autism spectrum disorders. We hope that professionals will consider becoming members of the Autism SIG and help promote quality behavioral intervention for individuals diagnosed with autism spectrum disorder.

## Behavior Analysis and the Arts

By Abigail B. Calkin

Behavior Analysis in the Arts (BAARTs) is the SIG group for the promotion of the relationship between behavior analysis and all arts—literature, music, performing arts, and visual arts.

BAARTs Facebook page is [www.facebook.com/groups/303711403126912/](https://www.facebook.com/groups/303711403126912/). Since the 2021 ABAI conference, BAARTs had 24 posts. Travis Thompson, the previous chair of the BAARTs SIG has pulled back and we no longer have his almost weekly posts about writers, musicians, and visual artists. The rest of us do our best, but anyone interested in the arts can post at this site.

From June 2017 to April 2018, the SIG membership grew from 67 to 93, an increase of 28%. Since March 2018, the SIG membership grew from 93 to 177, an increase of close to a double. In 2021 it stood at 265. The members of the BAARTs Facebook page stand at an even 300 members at present.

BAARTs continues to hold scheduled meetings at the annual ABAI convention. This year such discussions were in small groups during the evening, which included a slide show of visual artworks, music performances, and literary readings.

A symposium related to the arts was “Write, Dance, Play: Behavior Analysis and Precision Teaching in the Arts.” Abigail Calkin was the chair and presenters were Calkin, giving a summary of her paper on “Writing on Writing,” published in the *International Journal of Educational Research* in 2018; Marisela Pallares, “A Component-Composite Analysis of Tap Dancing: Precision Teaching for the Performing Arts;” and Adam Hockman, “Practice and Performance Skills for Concert Musicians.”

One of our members, Ruth Anne Redfeldt is now the president of ABAI. Mentioned in last year’s report, is her recent publication, *The Beethoven Revolution in Perspectives on Behavioral Science* occurred in November 2020.

We continue to work on 1) additional presentations at the annual ABAI conference; 2) the connections between the arts and behavior analysis; 3) how to view any of the arts or a particular work of art from a behavior analytic perspective; 4) how many members are artists and in which fields; and 5) how many members have a strong interest in the various arts but are not artists per se. Additional ideas for the future also include 6) learning who in our ABAI organization are recognized artists—published creative writing authors (poetry, fiction, narrative or creative nonfiction, essay, etc.), artists who have been in juried art shows or sold a number of works (painting, drawing, architecture, sculpture, etc.), musicians (public performances, composers, conductors, etc.) and any other category not mentioned here. The criterion for this list is those who receive or have received pay for their work in the arts.

Whether an artist or aficionado of the arts to become a SIG member to learn more about the BAARTs SIG, please contact Dr. Calkin at [abc@abigailbalkin.com](mailto:abc@abigailbalkin.com). The benefits of membership in the group include receiving the excellent Facebook posts and viewing the expansion of behavior analysis into an area not extensively thought of as related to the analysis of human behavior. Given that all areas of human behavior are available to analysis, the combination of behavior analysis and its relationship to the arts still seems to be a new and an exciting field. Membership is free.

## Behavior Analysis in Health, Sport, and Fitness

BY JULIE M. SLOWIAK

The mission of the Behavior Analysis in Health, Sport, and Fitness Special Interest Group (HSF SIG) is to educate, coordinate, and provide resources to behavior analysts and other members of society seeking to address human challenges in health, sport, and fitness through the application of the science of behavior analysis.

We strive to fulfill our mission through: (a) Educating behavior analysts and other members of society and increasing awareness, visibility, and understanding of the application of the science of behavior analysis to health, sport, and fitness; (b) Disseminating information about the practice of behavior analysis and educational and training opportunities relevant to practice of behavior analysis in the areas of health, sport, and fitness; (c) Providing a professional network and access to educational and training resources (e.g., continuing education events, mentorship opportunities) for its members; (d) Obtaining financial resources to support research grants for behavior analysts who seek to conduct research with the objective to develop or evaluate behavior analytic interventions to resolve human challenges in health, sport, and fitness, and (e) Collaborating with other non-profit organizations, healthcare agencies, and health, sport, and fitness professionals to maximize our impact on current efforts.

The HSF SIG organized as a 501(c)(3) not for profit organization in April 2019, and its annual strategic plan includes five strategy areas to support the continued growth of the practice of behavior analysis in the areas of health, sport, and fitness: (1) Visibility and Awareness, (2) Business Skills and Entrepreneurship, (3) Credentialing and Payment, (4) Training and Professional Development, and (5) Research. Over the past year, HSF SIG members have moved the organization's mission forward through their work within three Volunteer Committees. The primary aim of the HSF Visibility Committee is to increase the visibility of the HSF SIG, HSF SIG members, and the application of behavior analysis to the areas of health, sport, and fitness to behavior analysts and the

general public. The primary aim of the HSF Professional Development Committee is to support, encourage, and promote the development of practitioner competence. Finally, the primary aim of the HSF Research Committee is to support, encourage, and promote health, sport, and fitness-related research within the field of behavior analysis and among current and prospective HSF SIG members.

Additional leadership opportunities have been added as the organization continues to grow. In addition to creating Lead Committee positions within the three volunteer committees, a new director position was established in Spring 2021 to fill a new officer position, the Communications Manager. The Communications Manager participates as a member on the HSF Visibility Committee and leads and oversees other volunteers involved with the SIG's website, blog, newsletter, and social media platforms.

In February 2021, the HSF SIG accepted applications for its small research grant program. The purpose of this grant is to support graduate students who engage in experimental research to demonstrate the application of behavior analysis to address human behavior in the areas of health, sport, or fitness. Additional goals of this program are to disseminate behavior analytic research and practice and to expand research opportunities for graduate students of behavior analysis. With available donations received through fundraising and co-hosting continuing education events, the HSF SIG was able to award three \$500 grants this year! Details for the 2023 HSF SIG Small Research Grant program will be announced in late 2022, and applications will be due in February 2023.

Our Annual Business Meeting was held virtually in June 2021. At this year's meeting, we introduced new members of the Board of Directors. We presented the HSF SIG's mission, strategy areas, major goals, and opportunities for members to get involved. We also provided an overview of our accomplishments over the past year. Major accomplishments during 2021 included growing our membership to the largest it's been since the HSF SIG's inception, co-hosting professional development opportunities that highlight HSF practitioners, disseminating research via social media, and growing the small research grant program. In addition, the special issue "Behavior Analysis in Health, Sport, and Fitness" was published in *Behavior Analysis: Research and Practice* in August 2021. The HSF SIG recognizes the efforts of lead guest editor, Dr. Julie Slowiak, guest editors, Dr. Raymond Miltenberger and Dr. Carole Van Camp, and editor, Dr. Joel Ringdahl, for their great effort in making the special issue come to fruition.

One of our ongoing goals is to continue to increase visibility of the HSF SIG at the ABAI annual convention, as well as at state and regional conferences, through organizing fun activities for attendees that focus on maintaining healthy habits during travel and combating

sedentary behavior while attending conferences. If conference organizers are interested in collaborating with us to organize a health and fitness-related event (whether in person or virtually), please email our Membership and Outreach Manager at [membership@hsfsig.org](mailto:membership@hsfsig.org).

In late 2021, the Board of Directors approved a new HSF SIG-sponsored outreach activity for members, the HSF Practitioner Support Squad. Occurring monthly, the HSF Practitioner Support Squad meetings provide a space where BCBAs, or individuals training to become BCBAs can connect with one another in a laid-back environment to collaborate, troubleshoot, and brainstorm ways to continue to disseminate the science of ABA into the areas of health, sport, and fitness.

Conversations among members continue to support the contention that several barriers and ethical considerations exist for those who desire to practice in the areas of health, sport, and fitness. In addition, opportunities to secure research and supervised fieldwork experiences in academic programs are limited by the small number of ABA faculty with expertise or interest in health, sport, and fitness, as well as limited course offerings. Our focus will be to continue to support those who are interested in practicing and conducting behavior-analytic research within the areas of health, sport, and fitness.

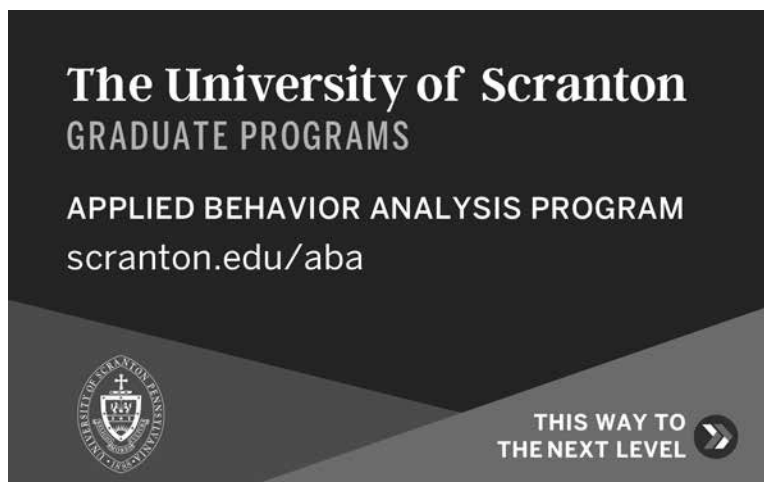
The current HSF SIG board members include:

- Julie Slowiak, Ph.D., BCBA-D, University of Minnesota Duluth & InJewel LLC (Executive Director)
- Sarah Burby, M.A., BCBA, Brett DiNovi and Associates & Small Changes Health and Wellness Coaching LLC (President/Secretary)
- Gabrielle Torres, M.S., BCBA, LBA, Finding Balance LLC (Treasurer); and
- Rachel Foster, M.A., BCBA, Doctoral Candidate at the University of Kansas, (Membership & Outreach Manager)

We would like to give special thanks to those members who have served on our Volunteer Committees over the past year:

- Jessica Arriaga, M.S., BCBA, QBS
- Janet Dai, M.A., BCBA, The Chicago School of Professional Psychology
- Nicole M. Davis, Ph.D., BCBA, Northeastern University
- Caitlin Eccleston, Master's Candidate, Pepperdine University
- ShaeLyn Harris, M.Ed, BCBA, Cusp Collective
- E. Justin Page, Ph.D., BCBA-D, LBS, University of Pittsburgh
- Rocky Perez, M.A., Western Michigan University
- Sarah Perrault, M.A., BCBA, LABA
- Sharlet Rafacz, Ph.D., BCBA-D, California State University, Fresno
- Carole Van Camp, Ph.D., BCBA-D, University of North Carolina Wilmington

For more information, please go to our website (<https://www.hsfsig.org/>), Facebook Page ([facebook.com/ABAI.HSF.SIG/](https://facebook.com/ABAI.HSF.SIG/)), or follow us on Instagram (@hsf.abai). If you're interested in joining the HSF SIG, you will find details on our website ([www.hsfsig.org/join-the-sig/](https://www.hsfsig.org/join-the-sig/)). Membership is \$10/ year for students and \$20/year for professionals (we also offer a 2-year option for professionals). If you have any questions, want to contribute to our blog, or would like to take a more active role in the Behavior Analysis in Health, Sport, & Fitness SIG, please email us at [director@hsfsig.org](mailto:director@hsfsig.org).



# Behavior Analysis in Military and Veterans' Issues

BY KENT A. CORSO AND ABIGAIL B. CALKIN

The Military and Veterans (MilVet) SIG is entering its eleventh year of operation at ABAI. The SIG focuses on how the field of applied behavior analysis (ABA) can contribute to those who currently serve or previously served in the military. There are many issues that concern the military and veteran communities (e.g., suicide, PTSD, TBI, and autism). Co-chairs, Abigail Calkin and Kent Corso, and members remain excited about working on the issues and needs of this specific population. During its early years, the SIG devoted a significant amount of time to increasing membership, while also examining viable ways of accessing the military and veteran community. A few exciting projects are now well underway that have helped recruit additional members.

The MilVet SIG currently has 110 members. When the co-chairs first applied to be a SIG there were 14 members. One of the MilVet SIG members, Megan Miller, created a Facebook page on May 28, 2014: Behavior Analysis in Military and Veterans' Issues SIG. The site is a closed group, which grew to 86 members in its first year. At the end of its second year, it had 190 members, an increase of 220%. In its third year, membership was 252, and as of March 1, 2022, the page had 627 members.

This year SIG members completed an unexpected fourth year for what was planned and funded as a three-year long research project at Whiteman Air Force Base, the Air Force installation with the most suicides among all Air Force installations. SIG co-chair, Kent Corso, led the team, including SIG members Jim Meador, Abigail Calkin, and Mike Kondis. Archived data were collected, mirroring the pilot study these same SIG members conducted in 2016-2017 for the Air National Guard. Combined with survey data, the team learned how morale and uneven application of discipline increase airmen risk for suicide. Using the only native application for the standard celeration chart (i.e., AimStar Pro), the team also concluded that a peer-to-peer intervention for suicides at Whiteman AFB was successful. In January 2020, the same team launched the first API for the digital standard celeration chart, for the first time in history, enabling computers to communicate about data and automatically generate a standard celeration chart for those data. This team also published a research paper in the journal *Families, Systems & Health*, using the API to analyze COVID-19 data. The article was published here in March 2022: <https://www.apa.org/pubs/journals/fsh>.

Our Facebook page contains weekly questions and requests about opportunities to learn more about how to treat this population and where to gain such experience. The absence of formal systems of ABA care delivery

within the Department of Defense and Department of Veterans Affairs continues to be a barrier to providing ABA providers access to helping this population. SIG member Dr. John Borgen, now at Mississippi State University, has completed his literature review to help support advocacy for ABA's application in the Departments of Defense and Veteran Affairs medical systems. The SIG formally requested that ABAI partner with it to discuss potential advocacy and collaboration to address this issue. There were two phone calls in early summer 2021 to move forward together, but this collaboration seems to have stalled due to multiple competing demands for the SIG and ABAI representatives. The critical barrier for spreading ABA to veterans and service members is that it does not meet the requirements contained in federal regulation: 32 CFR 199.2 definition for reliable evidence standards. Without inclusion in this federal statute, ABA will not be accepted or reimbursed for anything other than autism within these medical systems.

There is much that the field of ABA can contribute to the military and veteran community. Despite the barriers, the SIG will continue to support this community, raise awareness and build momentum through the ABA community at ABAI and elsewhere. Professional conferences are great opportunities to meet prospective members of the MilVet SIG, current members, and the co-chairs. Any parties interested in SIG, contact Dr. Corso at [kentcorso@gmail.com](mailto:kentcorso@gmail.com) or Dr. Calkin at [abc@abigailcalkin.com](mailto:abc@abigailcalkin.com). Membership in the MilVet SIG is free.

## Behavior Analysis SIG on Supervision

BY LINA SLIM

ABAI approved the Behavior Analysis SIG on Supervision (BASIGS) on November 23, 2020.

The mission of the Behavior Analysis SIG on Supervision (BASIGS) is to support our members by developing, promoting, and advocating for exemplary training of behavior analysts as supervisors. We promote best practices in the supervision of behavior analysts to ensure effective and ethical service provision by developing systems and disseminating standards of supervision practices. We seek to uphold supervisory competence in cultural humility and responsiveness.

BASIGS vision is to transform the provision of supervision through education, mentorship, and coaching to promote the professional and personal development of Behavior Analysts achieving elevated standards of performance and execution in the field.

BASIGS current executive committee includes:

- Lina Slim, Ph.D., BCBA-D, CCC-SLP (Chief Communication Officer Liaison to ABAI SIG)

- Kasey Gerhart, MA, LBA, BCBA (Co-Chair)
- Susan Ainsleigh, Ph.D., BCBA-D (Co-Chair)
- Jane Carlson, Secretary
- Cheryl Davis, Treasurer
- Karrie Lindemand, Membership Coordinator
- Laura Rojeski, Student Membership Coordinator
- Jen Klapatch, Communications Coordinator
- Lillith Reuter-Yuill, Research and Grant Competition Coordinator
- Nathania Wong, Social Media Coordinator
- Anabel Garza and Clara J. Thorn, Student Member Representative

BASIGS has been meeting virtually monthly throughout the year. We have increased our membership from 16 to 34 members. Our membership and executive and Task Force leaders have been actively involved on several initiatives developing a pathway to seek and achieve the highest standards and competency in supervision and supervisory behaviors, and systems for supervisory/supervision quality oversight and maintenance. Activities achieved and ongoing:

- Developed by-Laws – Achieved
- Developed membership guidelines, fees, and processes – Achieved
- Developing a supervision task list & curriculum: Goals are to develop and design a standardized curriculum for supervision and collaborate with other SIGs and behavior analytic organizations for integrity measures and dissemination efforts – Ongoing
- Developing a survey regarding supervisory practices, analyzing outcome data, and engaging in dissemination for best practices – Ongoing
- Established Social Media presence: Achieved – Created a BASIGS Logo (design by Albert Topdjian)
- Invited presenters for the ABAA 48th annual convention in Boston: 1 symposium, 2 panels, 1 paper presentation – Achieved

BASIGS Executive Committee has assigned SIG Officer positions roles and responsibilities as follows:

- **Co-Chairs:** Co-chairs shall preside at all SIG and member meetings. Co-chairs are also responsible for counting ballots in any referenda submitted to the voting membership and shall exercise general supervision over the affairs of the SIG.
- **Chief Communication Officer Liaison to ABAA:** Responsible for communicating, collaborating with and disseminating to ABAA SIGs, Chapters and Boards on issues pertaining to advancing the standards for supervisory practices. Building partnerships with behavior analytic networks within and outside ABAA, and ABA organizations that share values and ethical principles for achieve the highest standards and competency in supervision and supervisory behavior.

- **Secretary:** Responsible for maintaining minutes of meetings and distributing to the
- **Treasurer:** Responsible for maintaining minutes of meetings and distributing to the Communications Coordinator. This person is also responsible for maintaining the SIG calendar of events and coordinating with others in the Executive Committee and all Task Force leaders for dates and other needed information.
- **Communications Coordinator:** This person will work directly with the Membership Coordinators and the Secretary. This person is responsible for collecting information from the Secretary, creating newsletters and other promotional items, and dispersing to members as needed. This person is additionally responsible for receiving incoming emails and distributing to the appropriate Task Force lead or Executive Committee member.
- **Membership Coordinator:** Responsible for maintaining and organizing the membership directory. This person will work directly with the Treasurer (membership fees) and Communications Coordinator (distribution of notices) on a regular basis. The Membership Coordinator is also responsible for aiding in the recruitment process of members of the SIG through partnerships with other organizations or outreach via a virtual platform.
- **Student Membership Coordinator:** Responsible for organizing, maintaining, and recruiting current trainees in the field who are accruing their hours towards certification. This person should connect with university VCS coordinators as outreach or other organizations. This person is additionally responsible for providing the student members connections to the Mentor and Supervisor Directory Task Force or Resource Repository Task Force as needed.
- **Research and Grant Competition Coordinator:** Responsible for sending out announcements for grant applications, accepting applications, and providing the detailed lists of people to the Executive Committee for review. This person will also be responsible for coordinating appropriate dates for dissemination and review, notifying winners, and notifying others.
- **Student Member Representative:** This person should be an active trainee in the field of ABA accruing their hours towards certification. They are responsible for representing the climate of trainees in the field. This should be done through outreach and working in conjunction with the Research and Surveys Task Force, social media, and other dissemination projects.
- **Social Media Coordinator:** Responsible for maintaining social media networks via Facebook and other social media platforms. Additionally, this person will be responsible for developing ethical and professional conduct for social media, and monitoring conversations

to meet communication guidelines. The Social Media Coordinator will have an interest and skill set to design communication posts and “blurbs”.

BASIGS Executive Committee is currently working on several projects:

- Membership guidelines, fees and processes
- Established Social Media presence: created a BASIGS Logo (design by Albert Topdjian, Chief Design Officer of TalkMeUp <https://talkmeup.co/#/about-us>)
- Task Force Initiatives:
  - Resource Repository
  - Task List and Curriculum
  - Mentor and Supervisor Directory
  - Surveys and Research
  - ABAI Supervision Theme Track for ABAI Conference
  - Collaborative and Dissemination Efforts
  - Social Media Dissemination

In our 2021–2022 membership cycle, we will be increasing our membership to 60 members. Discussion regarding dissemination, practice and research grants will take place in the next year cycle, when we will discuss ways to seek grant funding to support dissemination efforts and fund BASIGS grants.

The SIG, and our members, are committed to actively engage in the coming year in conducting research, disseminating information regarding evidence-based practice in supervision, publishing scholarly articles, speaking and conducting workshops at professional conventions, presenting posters at professional conferences and teaching and/or mentoring students, and creating a social media presence.

BASIGS will plan to offer at least one grant annually contingent on grant funding and membership fees received, in empirical research and/or in application or dissemination. The grant is available to ABAI members who, as students or practicing clinicians, conduct empirical research or raise awareness about behavior analysis on supervision. Research projects should advance the evidence base for behavior analytic conceptualization or application of supervisory skills. Application or dissemination projects should involve effective application of the science-based principles of behavior on supervision across trainees and environments.

The BASIGS executive committee is looking forward to expanding our membership through various initiatives and increasing member participation on the executive and within our committees and task forces. We continue our efforts to complete several projects over the year to support our members through the following task Forces, and welcome new members to participate.

BASIGS Executive Committee developed active Task Forces addressing several initiatives relevant to supervision:

- Resource Repository (articles AND materials)
- Task List and Curriculum Development
- Mentor and Supervisor Directory
- ABAI Supervision Theme Track – Approved by ABAI for 2022 ABAI Convention (February 3, 2022)
- Publications – Survey for Research/ research papers / white papers and resources documents
- Collaboration – OBM SIG and TBA SIG on joint programs and initiatives
- Dissemination efforts through social media platforms, networking activities and email

The identified initiatives are successfully achieved and disseminated with increased commitment, volunteerism, and financial support from our members. Please consider donating your expertise/services in-kind, making financial contributions, or providing committee support so that we may meet the needs of our membership and complete our mission and goals.

## Behavior Analysis for Sustainable Societies

BY JULIA H. FIEBIG

Since the last Behavior Analysis for Sustainable Societies Special Interest Group (BASS SIG) meeting during the 2021 ABAI convention there have been a number of new developments for the SIG. The SIG has a new leadership team composed of Elizabeth Meshes, Jessica Ghai, Jordan Belisle, Lauren Hutchinson, and Julia Fiebig. The board meets monthly and also began facilitating monthly community meetings in early 2021. Monthly community meetings are open to all BASS SIG members via a zoom meeting. In the kick-off community meeting in February 2021, community members participated in a Prosocial Matrix Group process for the purpose of developing community values and identifying actions BASS members could take individually and that the group could take as a whole to support the values and mission of BASS. At the end of every community meeting, BASS members make a commitment to an action they intend to take in the month until the next community meeting. The SIG has been keeping a cumulative record on actions completed by members from February to June 2021 and these data can be found on the BASS website.

The BASS SIG also organized a shoreline cleanup through environmental organizations in Boston's Harbor to create an informal opportunity for people to connect with other behavior analysts interested in sustainability work and as an effort to mitigate some of the carbon footprint generated through travelling to the conference. The SIG hopes to organize such events that connect us to the local community during future ABAI conventions.

Other accomplishments during the 2021-2022 inter-conference period included establishing new social media accounts for BASS, inclusive of a new Facebook page and LinkedIn page being established in February 2021. Future goals for the SIG continue to include establishing a fund that allows the SIG to award financial support to practitioners and researchers working on community interventions related to sustainability. The SIG is exploring the establishment of membership dues and pursuing fundraising efforts for this purpose over the 2022-2023 period, as well as, creating CE opportunities for members.

At the 2021 ABAI Annual Convention, there were numerous presentations, panels, and workshops on a variety of topics related to climate change and behavioral science. Other ongoing happenings include the Sustainability Working Group (SWG) monthly meetings – a BFSR led effort which a BASS board member and liaison is a member of. SWG efforts over the last year have included building a network of sustainability liaison's among ABAI's Affiliate Chapters and look to holding quarterly networking meetings to offer support and share resources for sustainability efforts and presentations to emerge in regional and state affiliate chapter, as well.

Agenda items for the 2021 SIG meeting at ABAI included recruiting help from one or two members to facilitate a more active social media presence with the SIG's Facebook and LinkedIn pages. Plans for the upcoming year are to increase activity and engagement among members, continue monthly community meetings as a forum for collaboration, connection, and sharing of research and application, and provide opportunities for CEs for members by members. Membership in the SIG is open to all, and participation in the SIG offers professional connections to others interested in and working on behavior change related to sustainability and climate change issues. Establishing a new SIG board of highly motivated and dedicated ABAI members has infused a new energy into the SIG and been integral to the accomplishments of the last year and the plans for the upcoming year.

## Behavioral Development SIG

BY JESSICA SINGER-DUDEK

The main mission of the Behavioral Development (DEV) SIG is to promote a behavioral developmental thrust within behavior analysis. We strive to bring behavior analysis to the wider world of child psychology and learning, comparative psychology, adult development and gerontology, sociobiology, education, behavioral economics, developmental disabilities and autism, and language development, among other fields. We do so by a) incorporating theories and findings from other areas into our own research and b) by bringing professionals from outside traditional behavior analysis, including

developmental psychology, to ABAI events and forming collaborations.

The DEV SIG's membership includes faculty, students, and practitioners, many of whom are also members of other SIGs (e.g., Autism, Verbal Behavior) and are interested in the DEV SIG's mission, conference program, and discussions. Our SIG has 85 current members. We have a large international presence, with countries including Norway, Germany, Mexico, Italy, Spain, China, Korea, UK, Bosnia, Canada, and France represented. Students from programs affiliated with the SIG and others whose interests align with our mission are encouraged to join. The DEV SIG has a Facebook page and is now up to 78 members! We hope it will succeed in reaching a wider audience and increasing the SIG membership. The page is currently closed to the group, but those wishing to view it can request access just by clicking a button. We are always looking to grow our membership and are planning on establishing a newsletter with updates on SIG-related research in the coming year.

At the 2021 annual meeting we honored Dr. Jack Gewirtz and agreed to rename the Student Research Award the Jack Gewirtz Award. We did not hold the research competition in 2021 but will be returning to it in 2022.

One notable accomplishment this past year was that we created a weekly virtual forum to maintain contact and update ourselves about new research, events, and professional advancement. The plan is to continue with this form of communication along with the traditional activities of the DEV SIG.

The DEV SIG is represented in the ABAI annual convention program in the area of Human Development (DEV). DEV SIG members consistently serve as DEV program area coordinators who help bring exciting presentations on a variety of topics related to behavioral development to the annual convention.

The 2021 annual convention hosted 12 posters, 3 papers, 1 panel, and 8 symposia. We had an interesting B.F. Skinner Lecture by Marla Brassard entitled, "Improving Observed Parenting and Enhancing Well-Being in Parents of Young Children with Autism Spectrum Disorder," an International Address by Kieva Hbranchuk entitled, "The Interaction Between Development and Instruction," and an Invited Tutorial by Lin Du entitled, "0 to 60: Establishing Conditioned Reinforcers and Inducing Observing Responses."

At the 2021 convention we welcomed a very interesting B.F. Skinner lecture entitled, "Reimagining Solutions to the Persistence of Gun Violence in K-12 Schools," by Sonali Rajan, and International Address by Dermot Barnes-Holmes entitled, "Get Me Out of this Research Silo! Recent Developments in Relational Frame Theory and Their Implications for Connecting, Collaborating and Cooperating with Fellow Travelers in Behavior

Analysis,” and an Invited Tutorial by R. Douglas Greer entitled, “The Camouflaged Reinforcer for Learning to Talk, Read, Write/Think.”

These sessions well represented the breadth of research interests by members of the DEV SIG, particularly in terms of the population of participants studied (those with and without developmental disabilities; children and adults) and the focus on verbal, academic, and behavioral development across the lifespan. The contributions of all the session chairs, presenters, and discussants was very much appreciated.

We are also excited to announce that have already lined up invited speakers for the 2023 annual convention. Jagdeep Walia will be our B.F. Skinner Lecturer, Francisco Ruiz Jimenez will be our International Invited Presentation, and JeanneMarie Speckman will give an Invited Tutorial.

The DEV SIG has a poster at the ABAI Expo and holds a business meeting every year. All are welcome to attend. When we can meet in person, the DEV SIG members like to gather for a no-host SIG dinner. This enjoyable occasion is also open to all. In addition to being friendly, interdisciplinary by our very nature, and interested in many different topics and approaches, we have been a relatively informal SIG. Come find us at one of our presentations or invited talks, attend our business meeting, or Expo. We look forward to welcoming new members!

## Behavioral Gerontology

BY ZOE LUCOCK

Behavioral gerontology, the application and philosophy of behavior analysis to the problems of adults age 65 and older, has a long tradition, from Ogden Lindsley's (1964) chapter on the design of geriatric behavioral prosthetics, and Skinner and Vaughan's (1983) practical advice on how to compensate for physical decline and enjoy old age, to recent *Journal of Applied Behavior Analysis* publications on improving activity engagement and reinforcer selection for individuals with neurocognitive disorders (e.g., Engstrom, Mudford, & Brand, 2015; Lucock, Sharp & Jones, 2020). Indeed, behavior analysts across specialties work with older adults. The Behavioral Gerontology SIG (BGSIG) provides a forum for students, practitioners, and researchers with interests in applying the science, practice, and philosophy of behavior analysis to the problems encountered by adults in later life. Our goal is to promote the development, implementation, and evaluation of behavior analytic solutions to a wide variety of topics of high public health significance in the older adult population. Among these are the self-management for health promotion and disease prevention, functional assessments of and interventions for behavioural changes commonly associated with neurocognitive disorders (e.g., Alzheimer's disease), aging with a disability, and effective

healthcare navigation, including participation in inter- or multidisciplinary teams.

During the past year, The BGSIG has made continued efforts to disseminate behavior-analytic research and clinical practice related to the problems of older adults through our social media channels. As of March 2022, the BGSIG Twitter account had 593 followers (+13 followers), the BGSIG Facebook page had 2379 followers, and the closed Facebook group moderated by the BGSIG committee members had 602 members (+180 members). Over the last year, the BGSIG has approved and instituted formal bylaws and has implemented membership fees with the administration of dues now implemented through ABAI. The new BGSIG website went live in October 2021 and is now hosted and supported by ABAI. The website features a variety of content including blog articles from behavioral gerontologists, lists of relevant resource and journals and details about the SIG. In addition, the website has a “members only” section where BG SIG members can access training resources and videos of previous ABAI conference talks on behavioral gerontology. The BGSIG committee has held quarterly meetings to facilitate ongoing development of the BGSIG's goals. This year the BGSIG also began offering case consultation groups to practitioners in the field and these will be continued to be offered on an as-needed basis to BGSIG members.

Over the next year, the BGSIG intends to focus on increasing membership numbers; membership rates have decreased in comparison to previous years in the changeover to the new system, a decrease that we had anticipated, so promotion of the benefits of membership is needed. The SIG currently has 36 members consisting of six affiliate members, 18 full members and 12 student members. We also intend to discuss offering more events and resources related to behavioral gerontology research and practice, which may also increase membership rates.

## Behaviorists for Social Responsibility

BY HOLLY SENIUK, SARACH RICHLING, TRACI CIHON, JOSE ARDILA, AND KATHRYN ROOSE

The Behaviorists for Social Responsibility (BFSR) SIG is composed of dedicated volunteers and a board of Planners (drawing on Skinner's Walden Two). The Planners, who meet on a monthly basis, currently consist of Jose Ardila, Kendra Combs, Traci Cihon, Sarah Richling, Richard Rakos, Kathryn Roose, Jovonnie Esquierdo-Leal and Holly Seniuk. The Planner structure, active volunteers, the easy availability of digital communications, and the resulting mutual accountability continues to produce a high level of activity by the SIG. The following report summarizes only some of the SIG's activities for 2021.

Many members of the BFSR Planners supported the completion of Behavioral Perspectives on Culture and Community, the first of a new series of books to be published through ABAl. The book contains 17 chapters from leading behavior scientists engaged in research and applications of culturo-behavior science and was published in January, 2022.

### Matrix

BFSR has continued to focus on the Matrix Project (see BFSR's website at <https://bfsr.abainternational.org/> for more information) which was first introduced in the 2014 Behavior and Social Issues editorial (Mattaini & Luke, 2014). The Matrix Project is focused on increasing the number of behavior analysts working on social issues (e.g., social justice, poverty, sustainability, public health) using behavioral systems analysis to identify interrelations and practical steps that may be taken across more than a dozen sectors/players (e.g., behavior-analytic education programs, journals, students) who might have an impact on this goal. A significant amount of activity has continued to occur in the last year, so we will highlight a few of the recent activities.

- Diversity, Equity, Inclusion, and Education Group – The goal for this group is to develop materials to increase the inclusion of cultural/behavioral systems level content, particularly with emphasis on social issues, in university coursework. In 2020 the group created a survey that generated approximately 470 responses from behavior analysts. The purpose of the survey was to better understand how individuals are currently contacting behavior analytic content on social issues and what resources would be most beneficial. The group is currently working on analyzing the results of the survey for dissemination.
- Regional BFSR Groups – The goal for the regional groups is to create a network of BFSR SIGs in affiliated chapters of ABAl. To date, two affiliated state chapters of the BFSR SIG have been formed (TxABA in 2016 and KansABA in 2017). The ABAl BFSR Planners are continually working with state/regional/international affiliated chapters interested in developing BFSR SIGs that extend the reach of the Matrix Project to local action.

In 2020, the TxABA BFSR SIG Planners (Traci Cihon & Lee Mason) have focused on efforts to connect with other regional BFSR Groups (e.g., KansABA BFSR SIG) and to build interest in the TxABA BFSR SIG. In addition to preparing for the upcoming 2022 TxABA convention, the TxABA BFSR SIG will be hosting a webinar on March 31, 2022 featuring Dr. Susan Schneider who will share her recent work on behavior science, sustainability, and climate.

- Sustainability Group - The group is currently working on using the matrix analysis to identify feasible practices that state chapters could engage in to increase

behavior analytic activity in the area of sustainability. The group has disseminated a survey in order to gain information on what activities affiliate chapters have previously engaged in, or are actively engaging in related to environmental sustainability. The goal is to assemble a cohort of affiliate chapter leaders to become sustainability liaison for their chapter. In 2022, the group is planning to host various community meetings where liaisons can share information and learn from each other's experiences.

- Community Resilience Group – This working group was recently created in late 2020 and focuses on understanding how individuals as cultural collectivities respond and recover from systemic issues related to climate change such as hurricanes, fires, earthquakes, among others. The goal of this group is to develop measurement tools with a behavior systems orientation for assessing the practices involved in community resilience seen as adaptive outcomes. The group is currently collecting relevant literature from within and outside behavior analysis that discusses resilience as a concept. Following the completion of literature review, a measurement tool that identifies the multiple contingencies constituting a community's recovery efforts will be offered.
- Public Health Group - This working group was established in 2020 and has been actively working toward increasing connections between behavior science and public health. Currently, members of the Public Health Working Group are developing a behavioral conceptualization of the Social Determinants of Health, and linking this conceptualization with the objectives of Healthy People 2030 with a specific focus on health communication. The results of this work will be summarized in a poster presentation at the upcoming ABAl Convention where we will offer tangible suggestions for future directions related to collaborating with public health professionals and ways behavioral scientists can ethically expand their scope of practice to public health.

BFSR will continue to work on the Matrix Project over the coming year, updating the activities and outcomes of active sectors and coordinating the activities of the less developed sectors. Those who want to get involved can contact BFSR at [bfsr@abainternational.org](mailto:bfsr@abainternational.org)

### Infrastructure Improvements

To ensure that the SIG continues to make progress toward the SIG's mission, several infrastructure improvements were made in the last year. Since becoming an ABAl Associated SIG, BFSR has continued to develop infrastructure to provide members with valuable resources. The membership structure includes student members (\$5), full members

(\$20), supporting members (\$50), and sustaining members (\$100). The SIG has also developed a process for getting volunteers involved with SIG activities (email [bfsr@abainternational.org](mailto:bfsr@abainternational.org) if you are interested in volunteering). The SIG has been actively working on developing our website to house resources, disseminate information, and provide members with a way to connect with the SIG.

### **Volunteer Opportunities**

BFSR has steadily received the help of hundreds of volunteers throughout the years and, in recent times, the influx of individuals applying to volunteer their time for our projects has increased. The trend observed in volunteer participation in this SIG is a representation of the increased interest of behavior analysts to seriously discuss how to participate in the solution of social issues. Given the increased interest in working with us, primarily in the development of the Matrix project outlined above, the BFSR planners created a role to coordinate volunteer participation. Currently, aspiring volunteers can reach the group via our webpage, and based on their interests and skills we provide one or more working groups within the Matrix where they may participate. Defining the main activities of volunteers and allocation of volunteer time within the Matrix are the current focus of the volunteer coordinator and will serve as a basis for the construction of tools to support volunteer actions within BFSR.

### **Social Media**

BFSR remains active on various social media platforms; even more so now with so many people turning to social media as they are mostly in their homes due to COVID-19. BFSR continues to disseminate socially relevant articles, videos, and news stories to bring the impact of more abstract concepts to a relatable level. Important social events were also highlighted in ways that generated discussion among behavior scientists and connected like-minded practitioners and researchers.

### **Behavior and Social Issues Journal**

The BFSR Planners are heavily involved in supporting Behavior and Social Issues. In addition to active planning for, presenting at, and participating in the first culturo-behavior science (CBS) conference sponsored by ABAI, “Culturo-Behavior Science for a Better World” held virtually in October 2020, papers from the conference were published as a special section in the journal in 2021. Volume 30 of BSI also included two special sections: International Perspective on Cultural and Social Issues and the first set of papers comprising Part I of Revitalizing Behavioral Community Psychology, with a second set comprising Part II to appear in Volume 31. Both special sections resulted from the work from several BFSR Planners and volunteers. In addition, the focus on

behavioral community psychology will continue with the appointment of Jomella Watson-Thompson to the BSI Editorial Staff as Associate Editor whose focus will be on establishing the approach as a regular presence in the journal.

The BFSR Planners continue their support and active engagement with BSI, which is currently recruiting papers for its three ongoing special sections in Revitalizing Behavioral Community Psychology; Diversity, Equity, and Inclusion; and Activism, Advocacy, and Accompaniment. BSI also welcomes submissions for two special sections to be featured in 2022, one on the Science of Behavior and Cultural Systems Analysis on the Human Response to Climate Change, Global Warming, and Related Challenges, and the second on Culturally Responsive Pedagogy. More details about the journal, including the calls for papers regarding these special sections can be found on the journal website: [www.springer.com/journal/42822/](http://www.springer.com/journal/42822/)

### **Mark Mattaini Student Engagement Award**

In 2021 the BFSR Planners created an annual award to recognize the significant contributions that Dr. Mark Mattaini has made to BFSR, and culturo-behavior science. Dr. Mattaini was passionate about motivating students of behavior science to be actively engaged in work pertaining to social issues. More information on the award and how to apply can be found on the BFSR website: <https://bfsr.abainternational.org/student-award/>.

### **ABAI Annual Convention**

BFSR held our annual business meeting at the ABAI Annual Convention. BFSR was also represented at the convention through presentations and posters. In addition, BFSR held three networking opportunities (“side zooms”) where individuals interested in getting involved or learning more could network with the BFSR Planners to learn more about the SIG and opportunities for involvement. BFSR will be showcasing our activities through posters and a symposium at the 2022 Annual Convention.

## **Clinical**

BY EMILY THOMAS JOHNSON

Clinical Behavior Analysis (CBA) involves the application of behavior analytic principles to the full range of human problems, many of which have traditionally been considered “mental health” issues. CBA clinicians work with the relationship between thoughts, feelings, and other behavior to help people move beyond their problems and toward living more fulfilling lives.

The Clinical Special Interest Group of ABAI is for those who have an interest in clinical applications of behavior analysis. Clinical behavior analysts work in both research and applied settings. We wish to serve as a vessel

to connect training programs, basic research labs, and clinical service providers.

The Clinical SIG is dedicated to facilitating collaboration between researchers and clinicians to further the field's ability to apply clinical populations. This group seeks to promote Clinical Behavior Analysis (CBA) at ABAI and is interested in maintaining the longstanding relationship between basic research and clinical application.

At the 2021 convention, the Clinical SIG met to continue work on several ongoing projects and to promote continued connections. Our Clinical SIG newsletter has an annual edition that focuses on highlighting ABAI conference events of interest for Clinical SIG members. Additionally, the Clinical SIG is working to develop opportunities to recognize and support students doing research in this area. We continue to be interested in receiving updates from the various graduate programs and faculty that provide training in Clinical Behavior Analysis (CBA). These programs and labs within them are invited to provide brief summaries of the types of research that are currently underway. These summaries will help other students better identify graduate programs of potential interest and will help people with shared interests connect for organizing symposia and paper sessions for conferences. We also love highlighting behavioral health clinics (university or hospital based and private) that are providing Behavior Analytic clinical services. By being able to disseminate these practices, we can work to connect others looking to join such practices as well as students looking for practicum experiences with your clinic. In doing so, we can assist others in building their referral databases and knowledge of the availability of services. Finally, we are interested in disseminating any CBA relevant news: workshops, colloquia, regional conferences, or other special events (e.g., new books, announcing articles "in press"), but need your help. Your sharing of these accomplishments allows us to quickly build on the work of others and to

assist in connecting those that can serve in collaboration projects. Please send us summaries of your recent research, scientific summaries, and publications in this area to disseminate to others in our membership.

To be kept up to date on Clinical SIG activities and to access copies of the newsletter please check our listserv at <https://groups.io/g/ClinicalSIG>. The SIG also has a Facebook presence at [www.facebook.com/groups/abaiclinicalsigs](https://www.facebook.com/groups/abaiclinicalsigs)

## Crime, Delinquency, and Forensic Behavior Analysis

BY TIMOTHY J. TEMPLIN

Applied Behavior Analysis (ABA) has been useful in addressing societal problems related to the criminal justice field. For example, the role of teaching family homes in reducing recidivism and prison drug programs. An important impact has been on the treatment of adolescents and children to improve parenting for conduct disorder and reduce aggressive behavior and assaults in school. In addition, assistance in guiding the court system in identifying effective sanctions, called graduated sanctions, understanding the effects of behavioral/cognitive-behavioral programs on recidivism, parent training, functional behavioral assessment, and team problem solving in schools for emotionally and behaviorally disordered students. It has also impacted the assessment of child sexual abuse.

To ensure that those in the criminal justice fields have access to appropriate, evidence-based, behavior analytic, therapeutic resources to reduce crime and delinquency. SIG members have testified on behavioral intervention to reduce crime. Continued advocacy and research are needed to make behavior analytic services available to criminal justice, mental health, military and veterans' fields and to document the efficacy of behavior analysis in these applications.

### Live ABA Webinars



BALL STATE  
ONLINE

Learn more about Ball State University's 100% online programs.

- September 6 – 7 p.m.
- October 6 – 4 p.m.
- November 2 – 7 p.m.

(All times Eastern)

Scan to Register!



One of our SIG members was interviewed by a Bay Path University Student on January 25th, 2022, Timothy was interviewed by a Bay Path University student on our SIG, and crime and behavior analysis in general. If you have not seen it, take a look at the link below or on our Facebook Group: <https://youtu.be/gdzhMM79sY0On>

## Culture and Diversity

BY YORS GARCIA

We elected new board members

- **President:** Yors Garcia
- **Vice-president:** Kade-Ann Henry
- **Secretary:** Noor Syed

We have also recruited new members this past year. There are multiple goals we want to accomplish this year:

- Recruit more members.
- Organize a symposium next year at an ABAI event.
- Supporting research projects related to the mission of the SIG.

During the past year we have elected a new president (Yors Garcia), vice-president (Kade-Ann Henry), and secretary (Noor Syed). Last years during the annual ABAI conference held online we discussed multiple goals, for example, increasing social media presence, developing a website, and creating a podcast with theme of discussing action items. Due to COVID-19 pandemic, we could not accomplish most of these goals. However, we are hoping to complete during this coming year most of the above-mentioned goals.

## Dissemination of Behavior Analysis

BY MARGARET DANNEVIK PAVONE

The Dissemination of Behavior Analysis Special Interest Group had a productive year, overcoming several Covid-19 related challenges and continuing to support folks dedicated to disseminating the science of human behavior around the world. The SIG has continued to offer continuing education opportunities for members and for the community and also distributed grant funds for the 2022-2023 fiscal year. Membership fees remain low so that the group can encourage underrepresented populations to join and be represented. A 2021 business meeting was held in person where grant winners for 2021 and 2022 presented their projects and the results of their impressive dissemination efforts.

## Gambling

BY GSIG OFFICERS

The Gambling Special Interest Group (GSIG) is a home base for behaviorists interested in gambling research and treatment. Our mission is to foster the growth of gambling research in behavior analysis through collaborative research efforts, the coordination of researchers and ideas, and the sharing of resources for the mutual benefit of the field, its adherents, and those who are impacted by such endeavors. We invite interested parties to join the GSIG for free; whether your interest relates to research, treatment, policy, all of the above, or more broadly about risk and choice, we bet you will find the GSIG resources and literature on the behavioral analysis of gambling rewarding.

Our website (<http://gsig.squarespace.com>) is where prospective members can get information about the GSIG and join our group. The website also houses research software. Each program represents hours of work or finances staked by a behavioral researcher, and each program is completely free to our members. Our members are in the process of updating our software and plan to have new software on Github. Persons interested in gambling should also visit Analysis of Gambling Behavior at <http://repository.stcloudstate.edu/agb> for a journal devoted to behavioral research. The GSIG has had a long relationship with Analysis of Gambling Behavior, as many GSIG members have supported the journal in various roles over the years. Last year we collaborated with the journal to get the back issues online, from the first issue to the present.

## Naturalistic Developmental Behavioral Intervention

BY SOPHIA D'AGOSTINO

The Naturalistic Developmental Behavioral Intervention (NDBI) SIG is proud to share its second annual report. The NDBI SIG was founded in May of 2020 by Sophia D'Agostino (president), Melanie Pellicchia (member at large), Elizabeth Horton (secretary-treasurer), Emma Sipila-Thomas (student member/secretary-treasurer), Ana Dueñas (member at large), Amy Matthews (member at large), and Meghan Kane (member at large). The NDBI SIG aims to bring together professionals who have an interest in understanding and advancing the dissemination and implementation of Naturalistic Developmental Behavioral Interventions for individuals with autism spectrum and related disorders. The NDBI SIG has three primary purposes: (1) Advance the understanding of NDBI among behavior analysts; (2) Disseminate the latest research and practice related to NDBI in the treatment of individuals with autism; (3) Provide a forum for behavior analysts interested in NDBI to network and collaborate.

NDBIs are empirically validated interventions implemented in natural settings using components from developmental and behavioral science. Common examples of NDBI approaches include Incidental Teaching, Pivotal Response Treatment, Early Start Denver Model, Enhanced Milieu Training and many more. In order to bring parsimony to the field, Schreibman et al. (2015) proposed the common use of the term NDBI to refer to interventions that combine ABA with developmental science. The core elements of NDBIs as identified by Frost et al. (2020) include: (1) face-to-face on the child's level, (2) follow child's lead, (3) use positive affect and animation, (4) model appropriate language (5) respond to communicative attempts, (6) use communicative temptations, (7) provide frequent direct teaching episodes, and (8) provide quality direct teaching episodes. Please see our website (linked below) for a list of recent NDBI publications and other resources including handouts, videos, and books to learn more about NDBI.

During the past year, we have maintained a website (<https://sites.google.com/lehigh.edu/ndbi-special-interest-group/home>), twitter account (@ndbigroup), and facebook group ([www.facebook.com/NDBI-Special-Interest-Group-for-ABAI-106003411312893](https://www.facebook.com/NDBI-Special-Interest-Group-for-ABAI-106003411312893)) designed to grow interest in NDBI and share links to relevant resources. Our group met bi-monthly over the past year. Initial meetings were focused on plans to enhance our social media presence and create handouts to support the dissemination of NDBI. Recent meetings were NDBI focused article discussions (with Continuing Education) led by members. In addition, a subset of members have focused on writing publications with the underlying mission to support wide-scale implementation of NDBI. Our plans for the upcoming year include NDBI webinars, bimonthly article discussions, visuals and other handouts to increase the understanding of NDBI, and publications. We also hope to support NDBI research and/or ABAI conference funding for graduate students.

To become a SIG member or if you are interested in learning more about NDBI, please contact us at NDBISIG@gmail.com. Membership is currently free, and we welcome anyone to join. We hope to engage more practitioners in discussions around NDBI and provide resources to increase NDBI implementation.

## Neuroscience

BY SUZANNE MITCHELL

The Neuroscience SIG brings together researchers, academics, clinicians, and students interested in the intersections of behavior analysis and neuroscience and has four primary missions: (1) to introduce behavior analytic research to the neurosciences and introduce neuroscience research to behavior analysis; (2) to serve

as both a meeting place and training environment for students and professionals alike interested in basic and applied neuroscience research; (3) to serve as a forum for collaborative relationships, funding applications, and the sharing of best practice; and (4) to advocate for and promote high standards in the application of behavior analytic treatments for individuals with neurological dysfunction. A business meeting and presence at the Expo were included in the 2021 ABAI Annual Convention (virtual meeting). Increasing the profile and relevance of the SIG to ABAI members is a major focus, and anyone who is interested in contributing to this effort or has ideas for additional initiatives is encouraged to join and become involved by contacting Suzanne Mitchell at [mitchesu@ohsu.edu](mailto:mitchesu@ohsu.edu). This year we have launched a SIG website collecting resources of interest to members and a SIG specific email.

Membership is open to all ABAI members, as well as academics, researchers, administrators, clinicians from other organizations, and consumers. We welcome anyone with an interest in the intersection of behavior analysis and neuroscience and look forward to an exciting year further enhancing the SIG and its place in ABAI.

## Occupational Therapy SIG

BY AMY STANGO

### Mission

The occupational therapy special interest group's mission is to promote the development and dissemination of behaviorally oriented occupational therapy research, and to promote interdisciplinary collaboration between behavior analytic and occupational therapy professionals. This collaboration between occupational therapists and behavior analysts is a boon for members of the public who receive services to address deficits in meaningful behaviors, or occupations, such as activities of daily living, education, work, play, leisure, social participation, and rest and sleep.

### Gratitude

The occupational therapy SIG is grateful for the support of the ABAI members who helped to form the group: Jessica Dean, Adrienne Fitzner, Jenna Weisz, Susan Silvestri, Kristine Quinby, Josh Pritchard, Hallie Ertel, Christine Barthold, Ansley Hodges, Lina Slim-Topdijan, Rebecca Tagg, and Amy Stango. We also wish to extend our thanks to the Speech Pathology Applied Behavior Analysis (SPABA) SIG, which has offered ongoing support in the development of our SIG.

### Membership

In our 2021-2022 membership cycle, 64 individuals registered to be official members of the occupational therapy SIG. The occupational therapy SIG provides a

significant amount of free access to SIG information and interaction through our Facebook group. We have 2,799 Facebook users who have joined our Facebook group.

### Financial

There are currently no fees associated with joining the occupational therapy SIG.

### SIG Member Activities

The occupational therapy SIG was formed during the COVID-19 pandemic, and to date, the interactions of group members have been virtual. Formal and informal members of the SIG have been active conducting research, disseminating information regarding evidence-based practice, applying the principles of applied behavior analysis to the research and treatment of occupational performance, publishing scholarly articles, conducting webinars, creating digital material, speaking and conducting workshops at professional conventions, and mentoring students in both the fields of ABA and occupational therapy.

### Future Initiatives

The occupational therapy SIG is looking forward to expanding our membership through various initiatives, social media and increasing member participation within the group. We are also planning to complete several projects over the year to support our members:

- Journal club related to the intersection of behavior analysis and occupational therapy
- Disseminating behavior analytic information to occupational therapy professionals, such as through outreach to national and state-level occupational therapy associations and conferences
- Connecting OT and ABA professionals interested in conducting research on interprofessional collaboration
- Continue disseminating interprofessional collaboration information across related disciplines to increase awareness of evidence-based practice
- Creation and management of an online database of occupational therapists who are dual-certified as BCBA's or BCaBA's

## Open Educational Resources

BY VERONICA HOWARD

Cost and access are significant barriers to recruiting diverse future behavior analysts. For example, up to 60% of undergraduate students skip purchasing textbooks due to cost (Florida Virtual Campus, 2018), jeopardizing their ability to learn the material and be successful in classes. Students also report that the cost of educational materials is a significant barrier to success, requiring them to choose between basic living expenses like rent and food or their course materials (The Hope Center, 2021), which has only

been exacerbated by the COVID-19 pandemic (US PIRG, 2021). Free and openly licensed educational resources improve student success and retention, particularly among groups historically underrepresented in college (e.g., Fischer et al., 2015, Colvard et al., 2018). Our volunteer-led community seeks to promote educational affordability by promoting the use of Open Access (zero cost) and openly licensed Open Educational Resources (OER) to better support students and promote diversity and inclusion in the field of behavior analysis.

### Mission

The Open Educational Resources SIG aims to promote the adoption, creation, and dissemination of open educational resources in behavior analysis. We do this by providing educational events and opportunities to teach about the value of low-cost educational, training, and research resources. We also build community, providing a forum for OER creators to collaborate on new projects and highlight amazing new resources, reducing the individual workload required to create and manage OERs. We also work to disseminate news about OER and the empirical benefits of these resources within and beyond our membership.

### Governance

Our community is currently led by Rachel Potter (Mary Baldwin University). Our board includes Ryan Sain (Mary Baldwin University/PsychCore), Clint Evans (Behavior Chef), and Brian Middleton (Bearded Behaviorist). Our Secretary/Treasurer is Veronica Howard (University of Alaska Anchorage).

### Events & Activities

Since our last annual report, the SIG offered three new continuing education events, including:

- January 2021: "The Environment in Which ABA Evolved: The History of ABA in its Historical Context" with Dr. Chris Barthold
- December 2021: "An Introduction to Trauma-Informed Care & Moral Disengagement Theory" with Brian Middleton, BCBA (i.e., "The Bearded Behaviorist")
- June 2021: "Teaching ABA With Open Educational Resources" with Drs. Rachel Potter and Ryan Sain

All of these sessions were recorded and are available for free for our members to access through our OER SIG member forum.

SIG leadership also shared resources to the community, including links to related groups' conferences, free-to-access webinars, and openly published resources within and beyond the field. Finally, SIG leadership expanded the reach of behavior analysis through presentations at the Open Education Southern Symposium and at the 2021 Open Ed conference and promoted open access and

openly licensed resources with presentations to the Virginia Association for Behavior Analysis and at the Association for Behavior Analysis International annual conference.

## 2022 Goals

The community is gearing up for another year of amazing CE opportunities plus some ambitious new projects, including the development of introductory-level modules to teach basic behavioral principles and applications as well as developing a curated list of free and open access resources to support courses teaching BCBA ethics courses. Volunteers needed!

We will also be working hard to highlight the amazing open publications that currently exist, including the Openly Licensed supervision curriculum developed by our member, Dr. Rachel White (University of Alaska Anchorage Center for Human Development) and Special Topics in Behavior Analysis, an openly-licensed book written by Dr. Maggie Pavone (Lindenwood University) and many co-authors and student creators.

## Get Involved!

The OER SIG is open to any behavior analysts working in research, teaching, and practice who are interested in promoting the free and open dissemination of behavior analytic materials using open licenses. Students are very much welcome. More information about our free membership can be found at the SIG's website, [www.openbehaviorsig.org/](http://www.openbehaviorsig.org/).

# Organizational Behavior Management Network

BY LORI LUDWIG

Founded in 1982, the Organizational Behavior Management (OBM) Network exists to develop, enhance, and support the growth and vitality of Organizational Behavior Management through research, education, practice, and collaboration. Our members are consultants, managers, professors, and students who research and apply the science of behavior in organizations in areas such as Performance Management, Behavior-Based Safety, Behavioral Systems Analysis, Consumer Behavior Analysis, Health and Wellness, Monetary Incentive Systems, Training and Development, and Leadership and Culture.

## Membership

Currently, the OBM Network has 243 members (173 Full; 70 Students). Full Members are current professionals in the field of OBM and other related practice areas. Student members are currently enrolled in a formal academic program in higher education. Membership benefits include access to an interactive membership portal, subscription

to the Journal of Organizational Behavior Management, reduced rates at select OBM Network events, eligibility to apply for the Chris D. Anderson Student Research Grant, the Outstanding Innovative OBM Intervention Award, and vote in the annual election for the OBM Network President.

## Conference

The OBM Network bi-annual conference will take place in conjunction with the 42nd Meeting of the Florida Association for Behavior Analysis (FABA) in Florida on September 24, 2022. Attendees can follow FABA's OBM track, then attend the one-day OBM Network Conference with invited speakers representing the diversity of topics Organizational Behavior Management.

## New Membership Platform

The Network is launching a new membership platform to enhance networking and collaboration across the field of Organizational Behavior Management. Our unique social platform will ensure an interactive membership for everyone and increase opportunities for members to connect with each other and the organization. We are excited about the long-term benefits of our new membership portal including a way to capture institutional memory and data analytics to help engage and retain members.

## Chris D. Anderson Student Research Grant

The Chris Anderson Research Award program fosters traditional research in OBM relevant to organizational settings. Recipients of this grant use behavior analytic methods, include specific behavioral targets as part of organizational change strategies, and present individual subject information or appropriate statistical tests to document group effects. This grant has been awarded to 13 students since 2007. The 2022 grant recipient was Andressa Sleiman for her research: Acceptability of Clinician's Use of the Teach-Back Method and Plain Language.

## Awards

**Lifetime Achievement Award:** This award has been given to 19 individuals since 1988 who have fundamentally advanced our understanding or application of behavioral principals in organizational settings. Past recipients of this award have been individuals whose contributions have significantly advanced the field of OBM. In 2021, we honored the late Dwight Harshbargar, past recipient of the award, to reflect on his mentorship, dedication, dissemination, and inspiration he leaves behind.

## Outstanding Contribution Award

This award has been given to 19 individuals since 1992 who have made significant and measured contributions to the field. The 2021 Outstanding Contribution Award recipient was Nicole Gravina.

### **Innovative Research Award**

The OBM Network gives the Innovative Research Award to authors of the most innovative research published in the Journal of Organizational Behavior Management each year. An Awards Committee independently reviews and scores articles to determine the winner. This award has been awarded to authors of 5 journal articles since 2016. The 2020 recipients were Michelle Arnold and Ron VanHouten for their research: Increasing Following Headway in a Driving Simulator and Transfer to Real World Driving. 2022 recipients will be announced in May.

### **Outstanding Applied OBM Intervention Award**

This award has been given to 3 organizations since 2018 who use OBM techniques to achieve measurable results. There were no applications for this award in 2021 or 2020.

### **Leadership**

Byron Wine stepped down as Executive Director having served from 2018-2021. Byron did an amazing job carrying forward the mission of the OBM Network during his term. We are grateful for everything he has done for the Network, and for his continuing service on the OBM Awards Committee.

We welcomed Lori Ludwig as the new Executive Director. Lori was our 10BM Network President and was to serve the Past President term in 2022. To cover this gap in our board structure, Sharlet Rafacz volunteered to serve an additional year as Past President on the board. Anna McCalpin serves as our current President, and our new President-Elect starting in May, is Doug Johnson.

Membership votes on the Network's President annually. Each President serves a three-year term, serving as President-Elect, President, and Past-President. Each president completes a Presidential Project during their term.

## Practitioner Issues in Behavior Analysis

BY MICHAEL WEINBERG

The Practitioner Issues in Behavior Analysis (PIBA) SIG is a special interest group that focuses on all areas of specialization for behavior analyst practitioners. This SIG developed a model licensing act for behavior analysts in 2007. The BACB's model licensing act also drew heavily from the PIBA SIG's model act to meet the needs and concerns of BCBA and BCaBA practitioners. We currently have a membership of 50 and also maintain a Facebook page for communication among members.

This SIG has worked with members and other SIGs on legal and ethical issues pertaining to the practice of behavior analysis. We promote and support means of ensuring the continued ability for behavior analysts to practice

independently. The SIG provides a means of communicating about current trends and concerns pertaining to the practice of behavior analysis and efforts to place barriers for such practice by outside organizations or individuals. We help support and promote the ability for behavior analysts to provide high quality services to family members with autism and other areas of application of behavior analytic methods. We also have interest in the support of expansion of behavior analytic approaches to various populations outside autism and developmental disabilities.

There are currently 35 states which have licensure laws in place with more states considering legislation at this time for the practice of behavior analysis.

In the past year, the SIG has made an effort to coordinate with other relevant SIGs and is working in coordination with the SIG Board to promote our mission and work collaboratively with all SIGs. Given the growth in the number of states with licensure bills in place and ongoing expansion of this process, our SIG can be a place for practitioners to share information and discuss opportunities and strategies to promote the practice of behavior analysis. We also participate as an integral part of ABAI overall by working together with the other SIGs on this matter of great importance and concern in our evolution as a profession.

We extend our support to efforts of the ABAI Practice Board on such efforts. This may include providing training, linking practice to the research literature, and making resources available to practitioners.

PIBA SIG has not limited itself to the adoption of licensure. The SIG also is involved in other support efforts to promote the practice of behavior analysis with various client populations and types of behavior. We promote the science of behavior, evidence-based practice, and see the need to ensure this linkage continues.

We are seeking nominations for officers for the coming year. Please join our PIBA SIG List in Yahoo Groups to post your nominations for officers. We welcome new members and hope to meet with those interested at the annual convention and other ABAI conventions.

Please sign and request to join the list. We do not keep a separate list of our SIG members.

Members in this SIG can be found on Facebook at: [www.facebook.com/groups/629483010970310](https://www.facebook.com/groups/629483010970310)

## Rehabilitation and Independent Living

BY CHRIS PERSEL

The Rehabilitation and Independent Living Special Interest Group (R.a.I.L.), established in 1981, supports and promotes the integration of Behavior Analysis in the field of rehabilitation, neurorehabilitation, and

related areas, especially for those individuals that have experienced a brain injury. Patients with acquired brain injuries or other neurological disabilities require behavior analysts to develop treatment programs in settings such as hospitals, free-standing clinics and private rehabilitation facilities with multidisciplinary teams. These individuals may also be dealing with complex, related medical conditions, intense psychosocial challenges and significant disruption to their lives.


The Rehabilitation and Independent Living SIG has been a small but engaged meeting place for rehabilitation treatment professionals, including BCBAs, to brainstorm innovative ideas, gather support to expand the field, compare program and treatment challenges. The last couple of years have been extremely difficult to connect group members with the intensity seen in health care environments. In previous years, the R.a.I.L. SIG has had participants from multiple states and from as far away as India, Canada and Ireland. The primary function and event for the R.a.I.L. SIG has been the annual ABAI conference. The amazing discussions and plans that have been developed at those conference meetings have continued to suffer in the absence of an in-person opportunity. Most members and active participants have continued to work to pivot their practice and work with the adjustments dictated by the COVID mandates and restrictions. The neurologically impaired population remained at great risk during this time and the lockdowns have proven to be devastating to their mental recovery and ability to receive the vital treatment they needed. Health care professional have also continued to experience and struggle with the mental health toll of the volatile environment.

The SIG continues to support expanding the understanding of brain injury and the need for behavior services. R.a.I.L. SIG members previously helped develop,

with the BACB, a long-term action plan for growing the field of behavior analysis in acquired brain injury. This plan remains relevant however continued implementation has been difficult. As outlined previously, the plan described numerous areas of challenge, and key points needed to develop the field include increasing the number of faculty mentors and related opportunities to provide education on brain injury to behavior analysis students and collaborate on research projects. There remained a great need for practical training and supervision of students including internship opportunities and partnerships between current treatment programs and BCBA verified practicum programs. The SIG has outlined plans to present material and research to not just ABA conferences but expand to other related professional conferences to promote the expansion of services. Collaboration amongst treating BCBAs and other professionals is vital to successfully integrating sound practices into rehabilitation settings. Finally, as guidelines for behavior treatment in brain injury rehabilitation are being formulated under a program with the Brain Injury Association of America, research on interventions with brain injured patients has been limited and has lacked some of the rigor needed to provide valued results. Further publication of well thought out research, is desperately needed.

The R.A.I.L. SIG has continued to welcome members from such diverse backgrounds as physicians and brain injury professionals to students and concerned family members. The power of that diversity is evident in lively discussions, informative exchanges of information and long-standing relationships that provide much needed support. Members are encouraged to share articles, program ideas and professional experiences. Members of the R.A.I.L. SIG must be a part of the solution. Growth of the R.A.I.L. SIG has come from current members networking with their peers and having the courage to step up to significant

Appreciate  
Encourage  
Empower  
**Accept**  
Befriend  
Respect  
Support  
Employ  
Include

 **Hope**  
... the nationwide  
premier provider  
of services for  
individuals with  
disabilities  
[hope.us](http://hope.us)

challenges this treatment population presents.

Visit the SIG Facebook page to check it out and join/like, the URL is [www.facebook.com/pages/ABAI-Rehab-Special-Interest-Group/118243448217580](https://www.facebook.com/pages/ABAI-Rehab-Special-Interest-Group/118243448217580)

## Sexual Behavior: Research and Practice

BY BARBARA GROSS

The Sexual Behavior: Research and Practice Special Interest Group of ABAI disseminates empirically verified information regarding sex education and therapy and supports basic and applied research on the emergence and maintenance of sexual behaviors. Members are professionals, teachers, direct service providers, parents, and consumers who are concerned with issues of sex therapy, sex education, and research. Additional information can be found on our website: [www.sbrpsig.org](http://www.sbrpsig.org).

Sexual Behavior: Research and Practice SIG was founded in 2007 and has been providing a symposium at ABAI's annual convention since its inception. Past topics have included sex education for students with developmental disabilities, the ethical treatment of inappropriate sexual behavior, and scientific descriptions of basic processes involved in the formation of sexual behavior. SIG interests will be included in ABAI 2022 through Sexual Behavior SIG's panel discussion on ethics in the area of sexual behavior and considerations for interventions on higher-risk sexual behaviors. The SIG also continued to provide web-based access to information and support via our website, and regularly disseminates research related to sexual behavior. Check our website for upcoming events!

In the upcoming year, the Sexual Behavior: Research and Practice SIG plans to continue to disseminate current research on topics pertaining to sexual behavior, to build on our community outreach through the maintenance of our SIG list of sexual behavior consultants, and to build community knowledge on sexual behavior research methodology and ethics. We also will continue to release an annual newsletter to spread information about education and research. We're looking forward to the year ahead!

## SIG Español

BY MAPY CHAVEZ ASKINS

El SIG Español fue fundado en el 2004, y nace de la búsqueda de espacios de habla hispana para el intercambio de experiencias, ideas, recursos e iniciativas por parte de analistas del comportamiento quienes tienen como primera lengua el español, o quienes trabajan con poblaciones cuya primera lengua es el español. Nuestra misión tiene a su base establecer lazos de comunicación y colaboración entre miembros de ABAI.

Otro objetivo importante del SIG es promover la investigación en países de habla hispana, trayendo dichos resultados como presentaciones a la convención anual de ABAI. A futuro, nos interesa re-establecer oportunidades para que este intercambio pueda ocurrir en español.

El SIG Español se reúne cada año durante la Convención Anual de ABAI.

## Speech Pathology

By Nikia Dower

### Mission

The Speech Pathology-Applied Behavior Analysis (SPABA) SIG mission is to promote dissemination of behaviorally oriented speech and language research and the application of evidence-based practices to speech and language professionals, as well as to foster active dialogue between behavior analysts and speech-language pathologists (SLPs) studying issues in speech, language, feeding, and communication, including augmentative-alternative communication.

### Gratitude

SPABA SIG is grateful for the support and guidance of former chair, Barb Esch. We would also like to thank our current officers and volunteers: Tracie Lindblad and Nikia Dower (Co-Chairs), Clodagh Murray (Grant Competition and Awards Coordinator), Heather Forbes (Treasurer), Sari Risen (Membership Coordinator), Lina Slim (Secretary), Deirdre Muldoon (Communications Coordinator), and Sophie Millon (Community of Practice Event Coordinator). We would like to extend our heartfelt thanks to Trina Spencer for being our Grant Competition and Awards Coordinator last year.

### World-Wide SLP-BCBA and SLP-BCaBA

We are proud to announce that there now 472 SLPs who are BCBAs or BCaBAs worldwide. We are present in 44 states, Washington DC, Puerto Rico and 15 countries outside the United States. We continue to provide and maintain an online database of practitioners dually certified as SLPs and BCBAs/BCaBAs from around the world [www.behavioralspeech.com/search-for-an-slpbcba.html](http://www.behavioralspeech.com/search-for-an-slpbcba.html).

### Membership

In our 2021-2022 membership cycle, our paid membership decreased to 35 members who provided a donation with 8 being student members. SPABA continues to provide a significant amount of free access to SIG information and interaction through social media; therefore, when the combination of formal members and SPABA Facebook group members are calculated, we are pleased to report a total of 9073 formal and informal members which is an

increase of 785 from our last report. The SPABA Facebook group has enabled our members to connect with each other to share or request pertinent information in a timelier fashion. Since the decision to make the SPABA Facebook group an open group for anyone requesting to join without requiring SIG paid membership, the interest in this group continues to increase yearly.

### Financial

Membership fees and donations go directly to fund our annual grant competition. For the past six years, our decision to ask for a nominal membership fee + a donation gave us mixed results. Starting in 2020 and continuing to date, great effort has been put into our membership drive as well as public displays of gratitude on social media when a member signed up and donated.

### Annual Grants

SPABA offers three \$250 annual grants: the Giri Hegde Empirical Research Grant, the Barb Esch Application Grant, and the Nikia Dower Dissemination Grant. These grants are available to ABAI members who, as students or practicing clinicians, conduct empirical research or raise awareness about behavior analysis among SLPs. Research projects advance the evidence base for behavior analytic conceptualization or treatment of speech, language, communication, and feeding disorders. Application and dissemination projects involve effective application of the science-based principles of behavior by SLPs or distribution of accurate information about the science-based field of behavior analysis among SLPs. We are pleased to announce that several of SPABA's previous grant recipients have had their research published.

The SPABA SIG's 2022 grant recipients presented their research at the SIG's business meeting during ABAI's annual convention in Boston. Each year, student members and practitioners may obtain updated information about submitting grant proposals for the current year on our website, [www.behavioralspeech.com](http://www.behavioralspeech.com).

### SIG Member Activities

Even though the COVID19 pandemic affected the ability of many to present in person for the bulk of both the 2020-2021 and 2021-2022 membership cycles, formal and informal members of the SIG continued to be active conducting research, disseminating information regarding evidence-based practice, applying the principles of applied behavior analysis to the research and treatment of speech, language, feeding and communication disorders in children and adults, publishing scholarly articles, conducting webinars, starting podcasts, speaking on podcasts, creating digital material, speaking and conducting workshops at professional conventions, presenting posters at professional conferences and

teaching and/or mentoring students in both the fields of ABA and speech pathology. While most of these activities took place in North America, several were done internationally and as such, furthered the SIG's mission. Our members presented at least 138 times during 2022 including the ABAI 2022 Annual Convention, annual state speech/language association conferences, annual state applied behavior analysis association conferences, numerous webinars, podcasts and a few members were interviewed on their local news channels. Many members were presenters at non-speech/non-behavior analytic conferences as well. QR Code for list of 2022 presentations:

### Past Initiatives

SPABA is committed to the consistent dissemination of ABAI's Interprofessional Collaborative Practice Between Behavior Analysts and Speech-Language Pathologists resource document to both behavior analysts and speech-language pathologists. We remain grateful for ABAI's initiative in producing this important document and are proud that two SPABA Executive Committee members were among the four authors.

SPABA hosts on our website the work of M.N. Hegde, Ph.D.. His contributions to the speech-language field while applying a behavior-analytic lens is truly inspiring.

SPABA produces a periodic electronic newsletter as a paid member benefit.

### Current Initiatives

SPABA has continued to offer free, community of practice events (SCOPE). Topics ranged from literacy, augmentative-alternative communication with a speech generating app (LINGGO), feeding and behavior as well as Practical Functional Assessment.

SPABA's ongoing and consistent social media presence helped in dissemination across disciplines. The SPABA SIG continues to be regularly active via our Facebook group, Facebook page, as well as Twitter, Instagram, Pinterest accounts and our newly established LinkedIn page.

### Future Initiatives

The SPABA SIG Executive Committee is looking forward to expanding our membership through various initiatives, social media, and increasing member participation on the executive and within our committees. We are also planning to complete several projects to support our members:

- Develop web-based tutorials and in-person courses to disseminate information regarding a behavioral approach to the study and treatment of speech, language, communication and feeding disorders in children and adults.
- Work with the Verbal Behavior SIG and Behavioral Gerontology SIG on joint programs and initiatives.

- Continue disseminating behavior analytic information to ASHA members through the ASHA community forum listserv and to US and international speech pathologists via various speech/language Facebook groups as well as presenting at speech/language conferences and conventions.
- Continue disseminating speech-language information to ABAI members and BACB certified individuals via various behavior-analytic Facebook groups and list-servs as well as presenting at ABA conferences and conventions.
- Continue disseminating interprofessional collaboration information across related disciplines and fields to maximize outcomes for shared consumers of our services. This collaboration has strong benefits and enhances communication between our related professions.

The identified initiatives are feasible only with increased financial support from our members. Please consider donating your expertise/services in-kind, making financial contributions, or providing committee support so that we may meet the needs of our membership and complete our targeted activities.

If you are interested in learning more about the SPABA SIG, wish to volunteer to sit on a committee, or assist with a specific project, please visit us at [www.behavioralspeech.com](http://www.behavioralspeech.com) and join or follow us on social media:

- Facebook Group: SPABA.SIG
- Facebook Page: SPABASIGofABAI
- Twitter: SPBASIG
- Instagram: SPBASIG
- Pinterest: SPABASIGofABAI
- LinkedIn: speech-pathology-applied-behavior-analysis-special-interest-group-of-abai

## Standard Celeration Society

BY THE SCS BOARD OF DIRECTORS

The Standard Celeration Society (SCS) became an ABAI special interest group (SIG) in 1995. The mission of the SCS aims to uphold and advance the defining features and conventions of the Standard Celeration Chart. The SCS strives to be a friendly and enduring forum, supporting application and dissemination of standard celeration charting across an expanding range of practitioners and other stakeholders. The values of the SCS that guide behavior in fulfilling the mission include acknowledgement and appreciation of the founding principles and applications of our science (e.g., “standing on the shoulders of giants”), community, authenticity, inclusivity, legacy, and kindness. Since 2015, the SCS has employed an organizational structure composed of a board of directors and volunteer leadership teams that actively work toward implementing new and maintaining current

initiatives designed to further the organization’s mission.

We have an active board of directors consisting of five members on 3-yr terms, an executive director, vice presidents, associate vice presidents, and committee members. The board of directors provide guidance and decision making for the SCS executive director, who carries out board initiatives with vice presidents, associate vice presidents, and volunteers. The board recently appointed a five member advisory council to support the work of the SCS by providing expertise and professional knowledge. Current leadership teams include finance, programs, membership, scientific and academic relations, non-conference programs, operations, marketing, communications, international relations, diversity, and website services. Our leadership teams have actively developed the underlying systems to support the SIG’s structure and facilitated institutional memory as individuals transition into leadership roles, a key component for voluntary leadership teams to maintain productivity.

Currently, the SCS has several active priority initiatives underway. First, the SCS is currently redesigning the central website for the SIG ([www.celeration.org](http://www.celeration.org)). While some components of the new website are already in place, we are completing the development of several other features, including a redesigned member gateway, free continuing education opportunities for members, publication resources, training program locations for students interested in academic training, and digital chart share. Membership in the SCS also offers additional benefits not available to non-members including discounted rates to the conference each year and access to the historical publication database of the *Journal of Precision Teaching and Celeration*. The fees range from sustaining membership for \$100, full membership for \$50, and student membership for \$25.

The second initiative focuses on highlighting our organization’s entrepreneurial members such that their skills, insights, and strategies developed over decades of business development in the area of precision teaching can be made available to others looking to start their own businesses. This is an exciting time to become involved with the SCS, as this organization has a long history of entrepreneurs creating successful operations that provide clinical/educational services outside the mainstream of applied behavior analysis.

Third, we are hosting an international conference. The event was postponed and is now scheduled for June 9-10, 2023 in Galway, Ireland at the Galway Bay Hotel. The keynote speakers will be Dr. Richard Kubina and Dr. Kent Johnson.

Finally, our 35th Annual Conference of the Standard Celeration Society will be held November 3–5, 2022 in Denver, Colorado at the Curtis Hotel. The conference spans three days, with the first day offering interactive workshops for practitioners and scientists of all kinds. The last two days feature invited and submitted symposium, panel, paper

presentations, poster session, annual chart share, and expo.

Please visit [www.celeration.org](http://www.celeration.org) for more information regarding all of our upcoming conferences. The SCS eagerly welcomes new charters and members into our community. This nurturing group is full of brilliant and seasoned professionals who are always willing to offer advice or mentorship. Simply become a member and see the opportunities accelerate!

## Verbal Behavior

BY DANIELLE LAFRANCE

The Verbal Behavior Special Interest Group (VB SIG) had another great year. We continued to fulfill the mission of advancing the theory, research, and practice of Skinner's (1957) analysis of verbal behavior by presenting awards to support the exemplary work of students and professionals, advancing the work of our student group, publishing two newsletters, disseminating information online, and more.

We applaud the students who received plaques and cash awards at our business meeting at the 2022 ABAI Annual Convention. There were three winners of the 2020 VB SIG Student Grant – First Place: Kristin Albert, Florida Institute of Technology; Second Place: Videsha Marya, Endicott College; Third Place: Zoe Sideras, Hunter College. We would like to thank the reviewers of this competition: Jason Vladescu, Daniel Conine, and Mirela Cengher. In addition, there were three winners of the 2022 VB SIG Student Research Competition: Evan Schleifer-Katz, University of North Texas; Lewis Bizo, University of Technology Sydney Australia and the Lojic Institute, Australia; Adrienne Jennings, Caldwell College. We thank the judges: Kent Johnson, Lesley Shawler, and Karina Zhelezoglo.

The VB SIG presented two professional awards. The Clinical Supervisor in Verbal Behavior Award was given to Dr. Nicole Rodriguez, University of Nebraska Medical Center. The VB SIG Excellence in Teaching Verbal Behavior Award was presented to Dr. Judah Axe, Simmons College. We thank the judges: Mark Sundberg, Tina Sidener, Tracy Lepper, Lesley Shawler, and Jason Bourret. The VB SIG also presented the 2020 Jack Michael Award for the enduring contributions of an advanced scholar in the analysis of verbal behavior to Dr. Caio Miguel. We thank the judges: Janet Twyman, Hank Schlinger, and Vince Carbone.

The VB SIG continued to support our student group this past year. The group was composed of six graduate students from around the country. The group held video conference meetings to discuss articles and their own research; they included expert researchers in verbal behavior in those video conferences. Additionally, the student group is working in lockstep with the VB SIG Council Members to provide feedback, support, and

disseminate new initiatives. Examples include assisting the Membership Coordinator with recruitment of authors publishing work in verbal behavior as new members, interviewing invited speakers as part of an online series of talk hosted by the SIG, and providing valuable input as council members worked to revise award scoring rubrics. Landon Cowen, Marquette University, served as the leader of the student group again this past year. Landon functions as the student liaison to the VB SIG Council and attends monthly VB SIG Council meetings. Additionally, one council member attends the monthly student group member meeting. The other 2021-2022 student group members include Maria Clara Cordeiro, Marquette University; Amanda Groos, Florida Institute of Technology; Mary-Genevieve White, Teacher's College, Columbia University; Zhang Astrid Wenhui, Teacher's College, Columbia University; and Tianjio Li, University of Maryland, Baltimore County.

The VB SIG published two full issues of VB News, our newsletter. Features of these issues included memorials dedicated to Dr. Jack Michael and highlights of our student group members. Additionally, the SIG's new Newsletter Editor is working on updating the look of our newsletter to support efforts in enhancing the experiences of our members. We are excited about the quality of our newsletter and the positive feedback from readers.

The VB SIG maintained a strong presence on the web and social media this year in an effort to continue dissemination of verbal behavior. The SIG Facebook page has 3.201k likes and 3.546k followers, and the SIG Facebook group has 4.1k members. We continued to post important information and opportunities such as the student and professional awards, and events such as ABAI presentations on the Facebook page and the website. In the coming year, we plan to continue using social media platforms to contact VB SIG supporters.

The VB SIG membership remained strong and increased in numbers this year. We plan to continue offering research and practice awards, publishing high-quality newsletters, offering a forum for graduate students to discuss verbal behavior, and showcasing verbal behavior opportunities and events on the web in an effort to maintain and increase our membership. From the 2021 ABAI convention through March 1, 2022, we maintained membership at 141 members, which shows tremendous dedication to the study of verbal behavior and support of the VB SIG. In 2022, we have also gained two more new members. Our members enjoy eight benefits: (1) receiving the VB News twice per year and having access (members only) to past issues on the website; (2) receiving emails about SIG-related events and opportunities; (3) joining the VB listserv to engage in discussions about verbal behavior; (4) becoming eligible to submit to the three VB SIG awards; (5) becoming eligible to be elected to positions on the VB SIG Council;

(6) becoming involved in the VB SIG student group; (7) gaining professional development; accessing our mini conferences and webinars at a discounted rate; and (8) joining an active community of people passionate about verbal behavior. Additionally, the SIG's council members are in the process of developing a new benefit for student members, which we hope to unveil at the upcoming annual business meeting, scheduled during the ABAI conference in May 2022. We are grateful to the 143 members who joined and supported the VB SIG this year.

In 2020, Dr. Andresa DeSouza joined the council, filling our newest position as Dissemination Coordinator. Andresa's focus has been to increase the VB SIG efforts toward dissemination of VB. To this end, the VB SIG hosted a series of online talks in 2021. Speakers for these events included the following prior Jack Michael Award winners: Dave Palmer (who presented in June), Mark Sundberg (who presented in August), Vincent Carbone (who presented in October), and Hank Schlinger (who presented in December). The style of these talks is unique in that each presenter speaks for about 50 min and then a member of our student group spends approximately 20 min interviewing the speaker after which we open the discussion to attendees for a 15 min question and answer period. We received positive feedback following each event, and the SIG is currently in the process of identifying another 4 speakers for a new series to be hosted in 2022.

Over the past year, we marketed a new website design and in the coming year, we plan to expand our reach and increase membership via branding with a new VB SIG logo. Additionally, we will host a new online series

to continue to increase excitement about applied and experimental work in verbal behavior; focus on issues of diversity, equity, and inclusion; and modify existing processes to ensure effective and efficient transfer of responsibilities following elections.

The work of disseminating and promoting verbal behavior would not be possible without the diligent efforts of the VB SIG Council. There were a number of new VB SIG board members elected this year, which include the following: Stephanie Keesey-Phelan, Ph.D., BCBA-D, LBA, Simmons University (Grant Competition Coordinator); Angelica Aguirre, Ph.D., BCBA-D, Minnesota State University (Newsletter Editor); Lesley Shawler, Ph.D., BCBA-D, Southern Illinois University (Professional Awards Coordinator); Robbie Hanson, Ph.D., BCBA-D, Lindenwood University (Secretary); and Videsha Marya, Ph.D., Endicott College (Website Coordinator). Additionally, Danielle LaFrance, Ph.D., BCBA-D, Elemy took the position of Chair, following completion of her first year as Chair Elect in 2020. The SIG also continues to maintain a close working relationship with Tiffany Kodak, Ph.D., BCBA-D, Marquette University, as the Editor of *The Analysis of Verbal Behavior*. We would like to welcome all new VB SIG board members! Other VB SIG board members include Kathryn Glodowski, Ph.D., BCBA-D (Treasurer); Lauren Schnell, Ph.D., BCBA-D (Research Competition Coordinator); Mirela Cengher, Ph.D., BCBA-D (Membership Coordinator); Andresa DeSouza, Ph.D., BCBA-D (Dissemination Coordinator); and Landon Cowan, Ph.D. student (Student Group Liaison).

**#1 Scheduler for ABA Providers**

**ABASchedules.com**

Minimize Time Automate Processes Maximize Revenue

ABA SCHEDULES

QR Code

# Ready to deliver exceptional care?

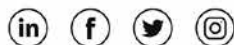
Digitally transform with one reliable, configurable cloud-based ABA platform that's HIPAA and industry compliant.

## Discover Lumary

Reliable | Affordable | Intuitive



Better Wellbeing Through Technology



Discover more at [lumary.com/us](https://lumary.com/us)



## 2022 Calendar of Upcoming Conferences

For more details, please visit the websites indicated and the Chapters section of the ABAI website.

### August

#### Wisconsin ABA 2022 Conference

August 11–13

Milwaukee, Wisconsin

[www.wisaba.org/conference](http://www.wisaba.org/conference)

#### New Zealand ABA 2022 Conference

August 26–28

Tauranga, New Zealand

<https://nzaba.wordpress.com/>

### September

#### ABAI 11th International Conference

September 1–3

Dublin, Ireland

[www.abainternational.org/events/international/dublin-2022](http://www.abainternational.org/events/international/dublin-2022)

#### 42nd Annual FAB A Conference

September 21–24

Ponte Vedra Beach, Florida

[www.fabaworld.org](http://www.fabaworld.org)

#### Minnesota Northland ABA 2022 Conference

September 22–23

Bloomington, Minnesota

[www.mnaba.org/2022-mnaba-conference](http://www.mnaba.org/2022-mnaba-conference)

#### Japanese ABA 40th Annual Convention

September 25–30

Kitakyushu, Japan

<https://j-aba.jp/meeting/2022/>

### October

#### Kentucky ABA Conference

TBD

Louisville, Kentucky

<https://kentuckyaba.org/>

#### 30th Annual ALABA Convention

October 12–14

Melbourne, Australia

[www.aacbt.org.au/national-conference-2022/](http://www.aacbt.org.au/national-conference-2022/)

### October (cont.)

#### 2022 Gulf Coast ABA Conference

October 15

TBD

[www.labaa.net](http://www.labaa.net)

#### ORABA's 5th Annual Conference

October 15

Tigard, Oregon

[www.oraba.org/oraba-2022-conference](http://www.oraba.org/oraba-2022-conference)

#### Washington ABA 2022 Conference

October 15

Auburn, Washington

[www.washingtonaba.org](http://www.washingtonaba.org)

#### Southeastern ABA 2022 Conference

October 20–22

Columbia, South Carolina

[www.seabaonline.org](http://www.seabaonline.org)

#### Mid-American ABA

October 20–22

St. Louis, Missouri

[www.mid-aba.com](http://www.mid-aba.com)

#### SAABA's 11th Annual Conference

October 24–25

Charleston, South Carolina

<https://sc-aba.org/Conference-2022>

#### Sociedad Mexicana de Analisis de la Conducta Conference

October 26–28

Oaxaca, Mexico

<https://smac.org.mx/congresos/>

#### 33rd Annual NYSABA Conference

October 27–28

Albany, New York

[www.nysaba.org/conferences](http://www.nysaba.org/conferences)

#### Tennessee ABA 25th Annual Conference

October 27–28

Nashville, Tennessee

<https://tennesseeaba.org/conferences/>

#### Arizona ABA 2022 Annual Conference

October 28–29

Phoenix, Arizona

<https://azaba.org>

### November

#### Arkansas ABA 2022 Annual Conference

November 3–4

Little Rock, Arizona

[www.arkaba.org/annual-conference/](http://www.arkaba.org/annual-conference/)

#### Colorado ABA Annual Conference

November 11–12

Denver, Colorado

<https://coaba.org/news-and-events/annual-conference/>

#### Georgia ABA 2022 Conference

November 11–12

Decatur, Georgia

[www.georgia-aba.org](http://www.georgia-aba.org)

#### Missouri ABA Conference

November 11–12

St. Louis, Missouri

[www.moaba.org](http://www.moaba.org)

#### 6th Annual BAAMS Conference

November 14–15

Starkville, Mississippi

<https://baams.org/events/>

### Dates To Be Determined

#### Alaska ABA Conference

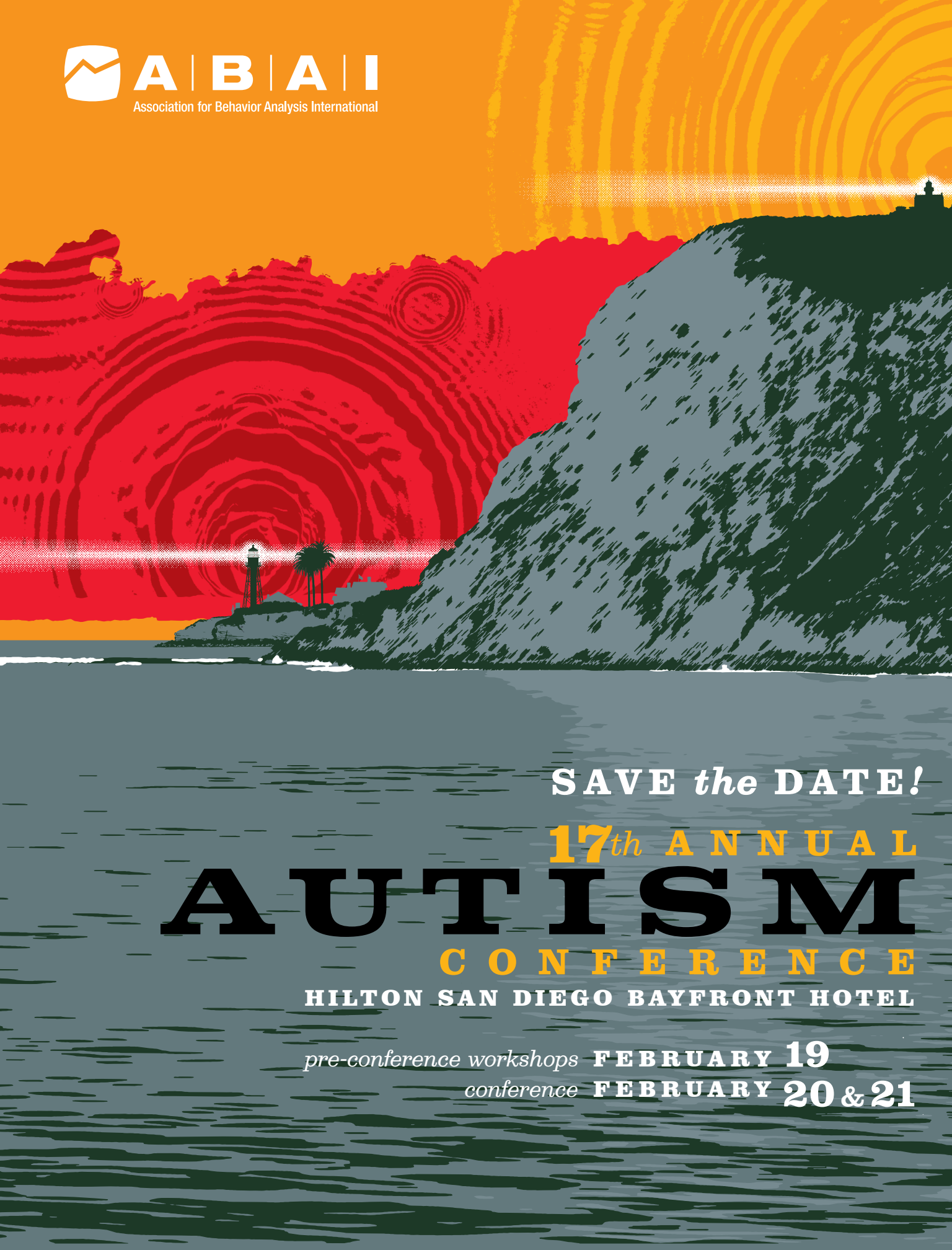
Virtual

<https://akaba.wildapricot.org/Annual-Conference>

#### Maryland ABA 24th Annual Meeting

Towson, Maryland

[www.mdaba.org/maba-events](http://www.mdaba.org/maba-events)



**SAVE *the* DATE!**

**17<sup>th</sup> ANNUAL**

**AUTISM**

**CONFERENCE**

**HILTON SAN DIEGO BAYFRONT HOTEL**

*pre-conference workshops* **FEBRUARY 19**

*conference* **FEBRUARY 20 & 21**

550 West Centre Avenue, Suite 1  
Portage, MI 49024

[www.abainternational.org](http://www.abainternational.org)

