

# THE ABA NEWSLETTER

VOLUME 12

FALL 1989

NUMBER 2

SIXTEENTH ANNUAL CONVENTION--OPRYLAND HOTEL, NASHVILLE, TN--MAY 27-31, 1990

## PRESIDENT

Julie S. Vargas

## EDITOR

Stephen A. Graf

## PRESIDENT-ELECT

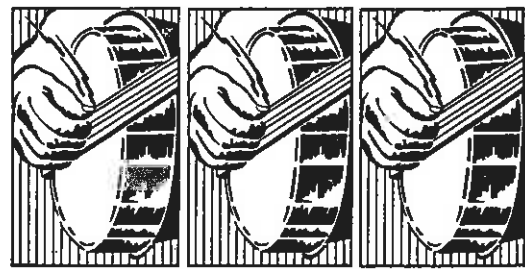
Philip N. Hinline

THE ABA NEWSLETTER is published three times each year and is mailed to ABA members as a benefit of membership. Publication of items in THE ABA NEWSLETTER does not imply endorsement by ABA. ABA reserves the right to edit all copy. Send submissions to Stephen A. Graf, Ph.D., Editor, THE ABA NEWSLETTER, Youngstown State University, Psychology Department, Youngstown, OH 44555. For advertising information, call the ABA office, 616-387-4494 or 4495.

## IN THIS ISSUE...

- 19 ABA Publications Order Form
- 11 THE BEHAVIOR ANALYST: Back Issue Order Form
- 13 Behavioral Bulletin Board
- 8 Business Meeting Minutes 1989
- 10 Call for Membership Board Coordinator
- 26 Classified Advertisements
- 14 Computer Survey
- 22 Contacts for Information Sharing
- 15 Convention Review 1989
- 12 Convention Travel 1990
- 12 Deadlines, October 1989-January 1990
- 6 In Memoriam
- 23 Membership Form 1990
- 21 Membership and Registration Data
- 25 Membership and Registration Data
- 22 Membership Recruitment Incentives
- 2 Message from the President
- 20 New Members 1989
- 5 Notes from a Radical Behaviorist
- 4 Notes from the Editor
- 7 On the Real Fatal Attraction
- 18 Program Committee Update

- 11 Russo Joins New Medico
- 7 Skinner Foundation Formed
- 22 Special Interest Group Forming
- 12 Supporting and Sustaining Members 1989
- 10 Tennessee Association for Behavior Analysis
- 10 Texas Association for Behavior Analysis
- 11 Trip to China



**A · B · A**  
NASHVILLE 1990

## MESSAGE FROM THE PRESIDENT

About two years ago, the ABA Council began discussing reorganization in order (1) to facilitate the work that committees and task forces accomplish, and (2) to coordinate the activities of the various working groups within ABA. I will elaborate a bit on the reasons for the need for reorganization, and then describe Council's actions to date.

1. Since the beginning of ABA, Council members have created committees and task forces for activities they thought ABA should be pursuing. Committees handle continuing work. Task forces are appointed a year at a time for specific projects. So, for example, when a Council member felt that ABA should have a position statement on "The Right to Effective Treatment", a task force was created in that name. Council appointed a chair and members.

In ABA's early years, committee and task force chairs reported directly to Council at the annual meeting. But as the number of committees increased, the ushering in and out of one chair after another for annual reports became tedious. So Council appointed liaisons--Council members who would keep in touch with the committees, and report for the chairs. The results were disastrous. Committee chairs no longer were present when Council discussed their group's work. They had to go through a liaison, who might or might not be in favor of what the committee had been doing, if, in fact, the liaison even knew anything beyond what was printed in the yearly report. I served on committees during the liaison system, and along with many other committee members, felt extremely frustrated when our considerable efforts received a cool reception from Council, and when we could not get a clear idea of what Council wanted us to do instead. Council, too, felt frustrated when committees and task forces failed to accomplish what they thought they had created them to do.

2. Along with the breakdown in communication between Council and its working committees and task forces, a gap existed between Council and grass roots activities of the membership at large. Apart from yearly reports, there is no established mechanism for Council members or the ABA staff to communicate with Special Interest Groups or with National, Regional, State, and Local Chapters of the international organization. Unless Council members or ABA's officers or staff happen to be members of one of these groups, they generally do not know what the various groups are doing.

Hence reorganization. At the Fall, 1989 meeting, Council discussed a plan by Iwata in which various working bodies within ABA were grouped under boards, according to their main functions. After much debate, the following structure emerged:

### Reorganization Plan

#### Administration Board

1. The ABA Office (Coordinates daily operations, ABA correspondence, finance, the Newsletter, nominations and elections, placement services)
2. Special Interest Groups (Formed by ABA members who share common concerns or interests)

#### Education, Professional, and Public Affairs Board

1. Continuing Education (Currently functions as part of the annual convention)
2. Professional Development Committee (Formerly "Professional Development of Women"; active)
3. Student Committee (Active - latest project was completion of the Graduate Training Programs Directory)
4. Public Relations Committee (Active - has set up press kit, news releases, and press rooms at conferences)

In addition, several new committees under this Board were suggested: 5. Undergraduate and Graduate Training; 6. Legislation and Public Affairs (to handle the increasing requests for political action received by ABA); 7. Peer Review and Consultation; and, 8. Quality Assurance.

#### Membership Board

1. Applications Review (Currently done by Full member volunteers at Western Michigan University)
2. Recruitment Committee
3. Awards Committee (Task force appointed because of controversy over awards given; recommendations include establishing an awards committee; committee not yet appointed pending reorganization)

## Program Board

1. Program Committee (Reviews and schedules convention activities)
2. Banquet Committee (Handled by Student Committee in '88, and by a two-person committee in '89. Needs longer lead time.)

**Task Forces Board** (Task Forces are appointed for one year at a time. May become committees if need continues.)

1. Right to Effective Treatment (Work completed; ABA position statement has been approved by the membership)
2. Right to Effective Education (Position statement has been drafted)
3. Ethics (Set up to recommend an Association position on a code of ethics for behavior analysts)
4. Doctoral Program Accreditation (New task force)

**Chapters** (The President of ABA will serve as coordinator)

1. Local (Such as the Chicago Chapter)
2. State (Such as the Tennessee Chapter)
3. Regional (Such as the Northern California or the Berkshire Chapter)
4. National (Such as the Japan Chapter)

\*\*\*\*\*

In Iwata's proposal, each of the boards with the exception of the Task Forces Board, is to be coordinated and supervised throughout the year by a coordinator. Coordinators are to be selected by Council from among applicants solicited from position announcements in the Newsletter. In this manner, (unlike the liaison system), Council hopes to get coordinators who are vitally interested in the committees and task forces for which they are responsible.

To solve the problem of communication, Council voted to return to the system in which the committee and task force chairs report directly to Council during the annual convention meeting. However, unlike the former procedure, all of the committee chairs within each board will attend the Council meeting at the same time. This will not only

facilitate communication between committees and Council members, but also will help different committees become aware of the activities of others working along related lines. Board coordinators will, of course, attend along with their committee chairs.

What will be changed if the new reorganization is adopted? The working groups within ABA will operate the way they always did, but chairs or head of committees and task forces will meet once a year directly with Council. Secondly, for the rest of the year, liaisons will be replaced by board coordinators who apply for the positions from the membership at large. Lastly, the new organization explicitly recognizes the role played by chapters of the organization.

## A Personal Reaction and Comment

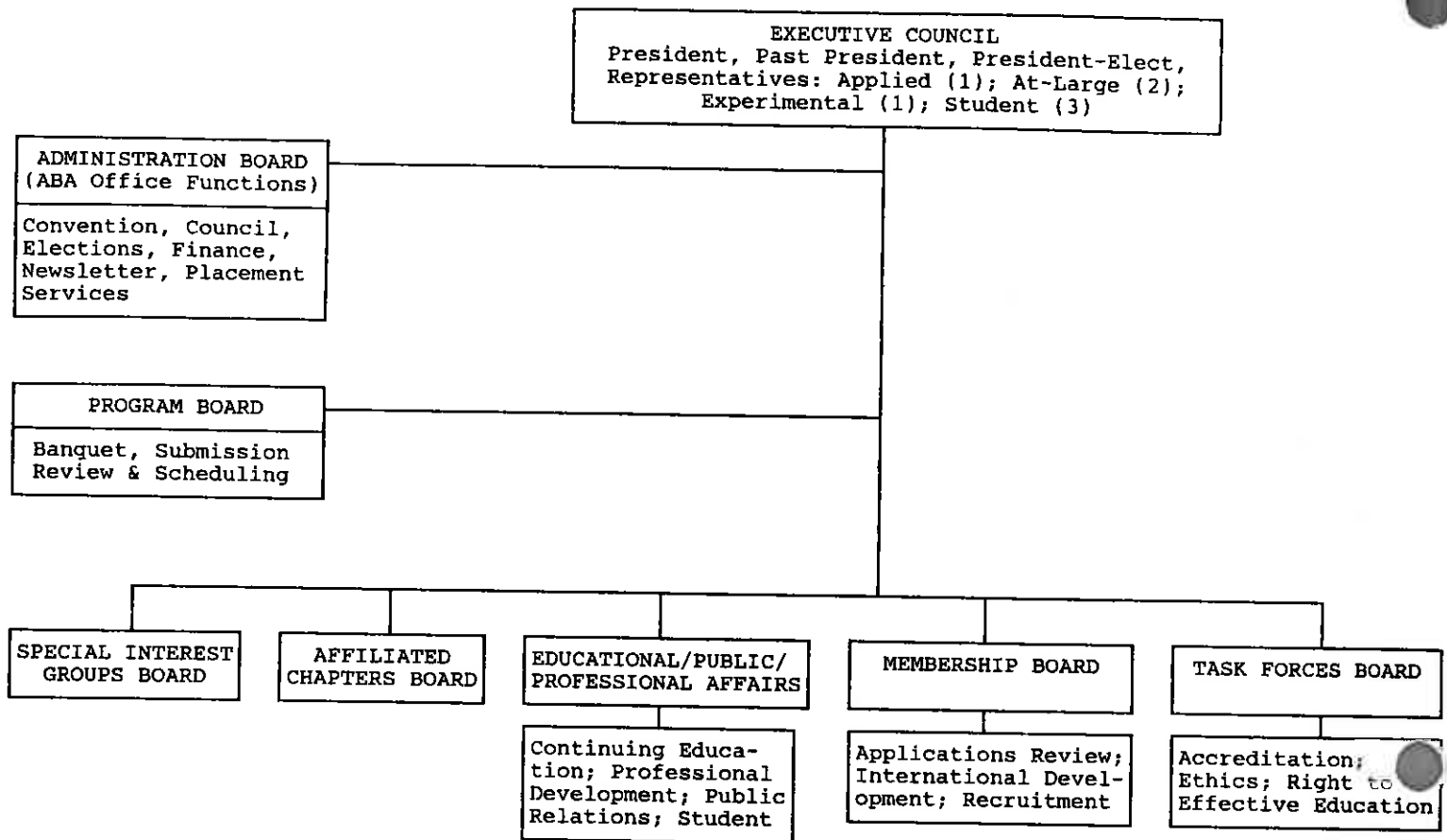
In the above, I have tried to represent the consensus of Council. In drawing an organizational chart to help clarify the reorganization, however, I could not bring myself to put Special Interest Groups under "Administration". Special Interest Groups have provided much of the driving force behind the success of our yearly conferences, and they operate independently very much like Chapters. I have therefore placed them under a board of their own.

My concern is that any proposed structure give all working groups within ABA as direct a voice to Council as possible. Having Council talk directly with committee and task force chairs (rather than through a liaison) is a step in that direction. So, too, the establishment of a Chapters Board should help communication between the rapidly growing local chapters and the parent organization. ABA has a solid grass roots tradition (note the number of groups who elect their own chairs). Any reorganization should capitalize on that strength. Iwata's leadership has resulted in a sound reorganization of ABA functions, and Council is currently trying out his suggestions along with suggestions by other Council members. I am pleased that Council is addressing the question of how ABA runs, and I feel that we are moving towards a system which will help all of the groups within ABA work together more effectively.

I invite you to write me with your comments and suggestions.

Julie S. Vargas, Ph.D.  
West Virginia University  
Educational Psychology Dept  
P.O. Box 6122  
Morgantown, WV 26506-6122

## ORGANIZATIONAL DIAGRAM OF PROPOSED STRUCTURE



## NOTES FROM THE EDITOR

"Is this not the best? I suppose this isn't my luckiest of lucky days. I doubt that very much. No question. I'm going completely mental." Those are the words Ed Grimley, Martin Short's comic archetype of frenetic autoclitics might use were he editing this issue of the Newsletter.

The reason for such enthusiasm? NOTES FROM A RADICAL BEHAVIORIST appear for the first time outside Dick Malott's own newsletter. Those of you not familiar with the NOTES can now share what some of us have had the opportunity to savor regularly in the past: Dick's yarns, reviews, and fables.

In a separate piece, Malott urges behaviorists to "telecommunicate", providing us with a glimpse of the rewards, some details on procedure, and a request for information.

ABA President Julie Vargas reports on the continuing efforts at reorganization of ABA's structure. After weighing many possibilities for some two years, how things

should work is now becoming clear, and the plan is being implemented on a trial basis.

One new position created by reorganization is that of Membership Coordinator and the description/announcement is found following the Business Meeting Minutes.

In the Program Committee Update, Michele Burnette provides an early preview of the 1990 Convention Program as well as changes in the Call for Papers. (If you haven't received the Call for Papers, call the ABA office to request one).

Other additions to the usual features include John Eshleman's response to a previous Newsletter piece, and portions of an interview with B.F. Skinner which appeared in a local Milwaukee paper after the Convention, reported for us by Susan Goeters.

Once again, the deadline for all submissions for next year's Convention is November 15, 1989!

Stephen A. Graf

## NOTES FROM A RADICAL BEHAVIORIST: ABA, 1989

Richard W. Malott

Western Michigan University-Kalamazoo

### THE REINFORCING FEATURES OF ABA

#### GOING THERE

The ride to ABA with my wife, Maria, gives us a few hours to chat without interruptions--the first time since our last trip to ABA.

#### THE HYATT STAFF

Being part of a conference in well-run hotels, like the Hyatts, is like driving a well-engineered sports car--seeing the smooth functioning of the process is almost as reinforcing as partaking of the product. We OBM people could learn from the Hyatts about staff training and staff management. Everyone I met was pleasant, skilled, and helpful. I put their system to the test with our 12 heavy pieces of audio-visual equipment. Their system passed in the following areas: unloading, transporting, storing, more transporting, and setting up, with special favor after favor after favor. I tested everyone from doormen, porters, housekeepers, outside audio-visual personnel, and rooms setup crew. If we could run the education system that well, we'd wipe out illiteracy and everyone would have a ball in the process. (Incidentally, I've had a fair amount of experience with the inner-processing system, i.e. the dark underbelly of hotels, during the early years of ABA. I know you can't always expect Hyatt-level support.)

#### THE ABA STAFF

When we first started ABA, we were amazed at the efficiency, effectiveness, and courtesy of the professional and volunteer staff of ABA itself. Over the years, they have not only maintained, but even improved. We must not take them for granted. I don't believe in delayed reinforcement, and I'm skeptical of group reinforcement, but thanks to all of you, anyhow.

#### THE MEMBERSHIP

ABA is blessed with a large percentage of members to whom anywhere from several to all the following descriptors apply: bright, hard-working, nice, idealistic, realistic, talented, well-trained, thoughtful, insightful, and altruistic.

And I'll bet there aren't many organizations whose members address such a wide range of issues, including philosophical,

ethical, experimental, applied, engineering, logistic, and political--and across such a wide range of subject matters (from developmental disabilities to organizational behavior management). I can't find any crucial issues that at least a handful of our members aren't addressing. If you can, then you go ahead and address them. I'm proud to be a member of ABA.

#### THE THEORY AND SCIENCE OF BEHAVIOR ANALYSIS

Our enemies outside ABA rejoice at the death of behaviorism. I laugh. Our friends inside ABA mourn the death of the experimental analysis of behavior. For the last 15 years, they've worried that the M&M pushers have crowded out the true scientists and intellectuals. I laugh.

From the opening to the closing hour of ABA, we had multiple, concurrent sessions in the experimental and theoretical analysis of behavior (sometimes four concurrent sessions). And that doesn't include the greatest anniversary party I've ever seen--largely populated by experimentalists.)

I'll bet we're balancing the Purina lab chow pushers with M&M pushers at least as well as our colleagues in physics and engineering, or the biological sciences and medicine. Don't forget somebody's got to foot the bills, and that's the applied people. Weep no more, fellow behavior analysts, all is healthy at ABA. (Would you believe almost all?)

#### GREAT TALKS

Perhaps my favorite this year was Judy Favell's talk at the Women's Professional Development Breakfast. She talked about the problems of life under the competing concurrent contingencies for being a scholar, researcher, therapist, administrator, wife, mother, homemaker, hobbyist, and healthy human being. She gave one of the most articulate, perceptive, insightful, and witty talks I've heard.

I only had one quibble with her comments. She complained that, just before her flight to ABA, her daughter's doggie soiled the manuscript of her talk. That serves her right--where does she get off preparing her talk before the Convention?

#### FEMINISM

I used to enjoy saying I hung out with the feminists so I could pick up girls. One of the women at the Women's Breakfast asked Dave Lyon, "Are you here to meet women?" And that's the problem with female feminists today: they're one step ahead of you. No longer can a boy exercise his prerogative of

sticking a girl's pigtail into the inkwell and listening to her screech. Instead of squealing, she makes some smart-aleck remark that takes all the fun out of sexism.

#### FORMER TEACHERS

For the first time in 20 years, I got to see Nat (what do you mean by that?) Schoenfeld--Professor Schoenfeld, to me. He's a world-class teacher and one of my biggest heros. Yet he always scared the hell out of me. But that was when I was just a punk kid in graduate school. Now, at 52, I'm older than he was when I knew him at Columbia. So, I stood in line waiting to shake his hand and chat briefly man-to-man. Sadly, the longer I waited, the faster my heart beat. Once again, the chat was going to be man-to-boy--a boy desperately seeking approval but frantically fearing "what do you mean by that?" I knew that, when I said, "I'm pleased to see you," he'd ask, "What do you mean by that?" Happily, he was just as charming to me in person as he was to the audience of hundreds who listened to his talks at ABA. What a delight. What a relief!

#### OLD FRIENDS

ABA is a grand reunion where you can meet and chat with old friends--colleagues, former students, and former teachers.

#### THE AVERSIVE FEATURES OF ABA

#### OLD FRIENDS

Unfortunately, it ain't easy to find a place to have a sustained chat with those old friends--another problem of competing contingencies. The competing contingencies involve other old friends, as they walk by. You can't talk to two people at once. This is especially aversive, when the old-friends passers-by are the old friends of the person with whom you're talking and their passing interrupts as you were explaining the most profound idea you'd had since the last ABA.

#### UNHEALTHY FOOD

Over the last seven years, I have backslid from a 99.9% Pritikin diet to the depths of Dairy Queen depravity, especially when I'm away from Kalamazoo. My biggest concern is the dangerously delightful desserts. So I contracted with my performance contractor, "Conscience," to pay \$10 for each dessert I ate. I correctly assumed no dessert would be worth either \$10 or the lie it would cost. But symptom-substitution slipped slimily into my life in the guise of salted peanuts. Next year, that one goes on the \$10 hit list as well.

#### LACK OF EXERCISE

It's also hard to exercise during the packed days of the ABA Convention. This solution works well: I go for walks and jogs with old friends while we chat. That beats sitting in crowded and distracting bars eating salted peanuts. But now that the secret's out, we may encounter the distraction of meeting old friends during the walks, as a more-informed membership pours out of the bars and into the streets in 1990.

#### IN MEMORIAM

**Frederick P. Gault**, professor of psychology at Western Michigan University, died July 26, 1989, after a brief illness. During his tenure at WMU, Fred developed the doctoral program in psychology at WMU. Fred will be remembered by colleagues and students for his boundless curiosity, high energy and his devotion to his students and research in physiological psychology. Contributions for a memorial scholarship may be made to Western Michigan University.

#### BEHAVIOR ANALYST

New Medico Healthcare System, a national leader in the rehabilitation of traumatically brain injured patients is seeking a Master's or Ph.D. level Behavior Analyst for its post-acute residential facility located about 15 miles south of Little Rock, Arkansas. The candidate will be a member of an interdisciplinary team of professional clinicians, with the primary responsibilities as follows: formulate, implement, and monitor behavioral program plans; assist other clinicians in implementing data-based skill acquisition programs for their respective areas; oversee all data collection related to residents' activities while at the facility. Additional responsibilities and opportunities include participating in applied research, training staff in behavioral techniques, and representing the facility at conferences, other facilities' in-service training, and professional organizational activities. Qualifications: Master's or Ph.D. in Behavior Analysis or related degree. One year of clinical experience using applied behavior analysis with any population. Experience with traumatic brain injury preferred. We offer a competitive salary and a comprehensive benefit package including educational assistance and opportunity for growth and advancement. For consideration, please forward your resume and salary requirements to

Jim Joyce, Ph.D., Program Director  
New Medico Community Re-Entry Service  
Timberidge Ranch, PO Box 90  
Benton, AR 72015-0090

## ON THE REAL FATAL ATTRACTION: A REPLY TO TODD

John W. Eshleman

Precision Learning Corporation-Dublin, OH

It was with a sense of growing astonishment and dismay that I read Todd's (1988) response to Wyatt (1988) on the issue of promoting behaviorism. Todd makes a number of unwarranted and unfair assertions. To extend an analogy, could we not imagine someone like Todd criticizing evolutionists for being so "dogmatically fanatic" in support of evolutionary theory, and urging them to "lighten-up"? Todd seems to believe that the general public and the academic community do not so much reject behaviorism as they do the messengers of it. Where has Todd been? Many who reject behaviorism most assuredly do reject the philosophy--or, more properly, what they have been taught that philosophy to be, which, as many of us have noted elsewhere, is often a quite misrepresented version of the philosophy of behaviorism. To add to the analogy, it wasn't Scopes who was so objectionable to anti-evolutionists, it was his message.

Even more disturbing in Todd's article, however, is his assertion that the conversion of the masses "will occur with the scientific and clinical production of research and treatment that demonstrate clear and beneficial results." (p. 8). Again I ask, where has Todd been? Over the past generation behaviorists have developed a considerable body of research--basic and applied--that has clearly demonstrated beneficial results. Aplenty, and time and time again. My area is education, and I am well acquainted with behavioral systems of instruction that far out-pace anything that anyone else has developed; where students actually learn, become fluent in a subject matter, and feel better about themselves and education in the process. Call it Programmed Instruction, Precision Teaching, PSI, or even Direct Instruction--the effect is there, clear and indisputable. Except that, as a recent series of symposia and papers at ABA have shown (e.g., Lindsley, 1984; Lindsley, 1987), there has been an avid "political cover-up of behavior analysis in education" by those who reject both the research and its accompanying philosophy. That is why many of us are pursuing with zeal the "Right to an Effective Education." And, to reject one more of Todd's theses, we have not behaved "arrogantly" toward "the consumers of our work" in the development of behavioral systems of instruction. Further, I am will-

ing to bet that those behaviorists working in the field of psychology have not behaved "arrogantly" toward the consumers of their work, either.

The real fatal attraction is the ever-present siren-call embedded in Todd's message. It is a call to dilute, disguise, or even drop the message of behaviorism; to return to the warm, but strangling embrace of popular but prescientific conceptions of behavior. To be less than "fanatic" in the sense that Todd espouses is to do just that. Todd may not realize it, but if the philosophers of behaviorism stop talking behaviorism, behaviorism stops. I say, let's continue to say what we have to say, and redouble our efforts to teach people about the clearly beneficial results we have produced already, and why we have been able to produce them.

### References

- Lindsley, O.R. (Chair & Discussant). (1984). The political cover-up of behavior analysis in education: Follow Through. Symposium presented at the meeting of the Association for Behavior Analysis, Nashville, TN.
- Lindsley, O.R. (1987). Precision teaching. In M. Maloney (Chair), Precision Teaching and Direct Instruction. Symposium presented at the meeting of the Association for Behavior Analysis, Nashville, TN.
- Todd, D.D. (1988). Fatal attractions: Missing the point. ABA Newsletter, 11(3), 7-8.
- Wyatt, W.J. (1988). Fatal attraction: Must behaviorism kill itself to survive in non-academic settings? ABA Newsletter, 11(2), 19-20.

### B. F. SKINNER FOUNDATION FORMED

A B.F. Skinner Foundation has been formed to keep in print classics in behavior analysis. The Foundation's first project is to reissue the Behavior of Organisms. We plan to make available an inexpensive paperback. The version will not be a revision, but will contain minor corrections by Dr. Skinner. We expect the book to be available in 1990 and will keep ABA members informed about its progress.

Future plans of the Foundation include republication of Keller and Schoenfeld's Principles of Psychology, and the rest of Skinner's works which are currently out of print.

In 1989, the B.F. Skinner Foundation received tax-exempt status. Those wishing to make tax deductible contributions may send them to the B.F. Skinner Foundation, Box 825, Cambridge, MA 02238.

## BUSINESS MEETING OF THE MEMBERSHIP

In this section, the Minutes of the ABA Business Meeting are reproduced to provide a "hard" copy of the information discussed at the Convention in the Annual Business Meeting. Through this process, we hope to keep all members informed of events involved in the management of ABA throughout the year.

Comments or inquiries about ABA activities may be sent to  
William K. Redmon  
Secretary-Treasurer  
Association for Behavior Analysis  
Western Michigan University  
258 Wood Hall  
Kalamazoo, MI 49008-5052

Letters received will be sent to Council Members for review

### MINUTES

May 26, 1989

Hyatt Regency Hotel, Milwaukee, Wisconsin

Brian A. Iwata Presiding

#### May 1988 Business Meeting Minutes

JAMES M. JOHNSTON MOVED TO ACCEPT THE 1988 MINUTES AS READ. THE MOTION WAS SECONDED AND UNANIMOUSLY APPROVED.

**Secretary-Treasurer.** Iwata announced that David O. Lyon resigned and that William K. Redmon was appointed Secretary-Treasurer at the Fall 1988 Executive Council Meeting.

**Election Results.** Ballots Mailed: 896; Ballots Returned: 525.

**President.** The results were: Judith E. Favell, 221; Philip N. Hinline, 269; Abstain, 5; Void, 30.

**At-Large Representative.** The results were: Sigrid S. Glenn, 243; Brandon F. Greene, 221; Abstain, 25; No Vote, 6; Void, 30.

**Election Results for Student Representative.** Ballots Mailed: 347; Ballots Returned: 109. The results were: Dawn Delaney, 27; Matthew A. Mason, 14; Thomas G. Mattke, 19; Bryan Midgley, 41; Abstain, 2; Void, 6.

**Referenda Results.** Ballots Mailed: 896; Ballots Returned: 525

**Fiscal Year.** The Executive Council proposed to the Membership that the Fiscal Year be changed from July 1-June 30 to January 1-December 31. **Results:** Accept, 463; Reject, 6; Abstain, 19; No Vote, 7; Void, 30.

### Dues and Fees

1. The fiscal year of the Association shall be January 1 through December 31.

**Addition of Article VI.** The Executive Council proposed to the Membership that Article VI: Position Statements be added to the ABA Bylaws to establish policy for the issuing of Association Position Statements. **Results:** Accept, 413; Reject, 35; Abstain, 36; No Vote, 11; Void, 30.

### Article VI: Position Statements

1. Association Position Statements shall be approved by the Voting Membership in accordance with procedures adopted by the Executive Council. Thereafter, dissemination of such Position Statements shall be considered official only if made by an Officer of the Association, and, in the event of publication, if accompanied by a statement of endorsement as an Association Position Statement.
2. Executive Council Position Statements shall be issued by the Executive Council when time does not permit consultation with the Membership. These Statements shall be prepared by the Executive Council in accordance with the procedures adopted by the Executive Council. Thereafter, dissemination of such Position Statements shall be considered official only if made by an Officer of the Association, and, in the event of publication, if accompanied by a statement of endorsement as an Executive Council Position Statement.
3. Affiliated-Chapters and Special Interest Groups within the Association shall be required to disclaim explicitly any implication of Association endorsement of any Position Statement they might adopt unless such Statement has been formally approved by the Association.

**Position Statement.** Accept, 393; Reject, 56; Abstain, 40; No Vote, 6; Void, 30. The Position Statement was accepted as an **Association Position Statement on the Client's Right to Effective Behavioral Treatment.**

Iwata announced that the Position Statement would now be disseminated and to contact the ABA office to request a copy.

**Financial Report.** Redmon reported that ABA finances were in good shape. A question was asked about the effect of the dues increase on membership numbers. Redmon stated that this would not be known until the membership year-end.



### Convention Sites. The sites contracted are:

1990 Nashville      Opryland Hotel  
 1991 Atlanta        Hilton Inn & Towers  
 1992 San Francisco   Hyatt-Regency  
 1994 Atlanta        Hilton Inn & Towers

Chicago is under consideration for 1993. Members suggested Baltimore, Miami, Orlando, Montreal, Toronto, and Vancouver as possible sites for 1995.

### Committee Reports.

**International Development.** Judith M. LeBlanc, Chair, expressed the Committee's appreciation for the participation and support of the membership in their endeavors. The International Network Directory is completed and may be ordered from the office.

**Program.** M. Michele Burnette, Chair, reported that the Committee is working on job descriptions for the area and program coordinators, as well as the chair. The Call for Papers and criteria for submission have been revised for 1990.

**Membership.** W. Joseph Wyatt, Chair, reported that second and third renewal notices were mailed this year. Nonrenewing members were surveyed as to the reasons for not renewing; cost was most frequently cited. The Committee plans to develop a packet of information for new members and to obtain mailing lists for recruitment.

**Public Relations.** Henry S. Pennypacker, Chair, reported that the primary focus has been on convention coverage. Under the direction of Susan Goeters, Media Relations Coordinator, convention efforts have continued, and interactions with the media and the materials prepared have gone very well.

**Research Action.** Ogden R. Lindsley, Chair, reported the purpose is to acquaint (1) applied researchers with recent basic research results of application value; (2) basic researchers with applied problems needing controlled research; and (3) the general public with successful results of applied research. He announced his resignation as Chair and that he will recommend two members as co-chairs to Council for approval.

### Task Force Reports

**Accreditation.** Bill L. Hopkins, Chair, reported that the Task Force held its first meeting at the Convention.

**Ethics.** Michael Perone, Chair, reported that the Task Force had submitted its recommendations to Council. Iwata expressed Council's appreciation for the rapid completion of their task.

**Regulatory Issues.** Judith E. Favell, Chair, reported that the Task Force had completed their review of the Behavior Manage-

ment Section of the Accreditation Council's guidelines. A copy of the report may be ordered from the office.

**Professional Development of Women.** Ana Maria Montes, Chair, reported that the Task Force had again sponsored a Breakfast at the Convention with an excellent presentation by Judith Favell, and that the mentor/mentee network was being enacted.

**Right to Effective Education.** Beatrice H. Barrett, Chair, reported that the Task Force had completed a draft of student entitlements which was submitted to Council, who approved the Task Force's draft. The Committee is moving onto the next stage, which is to obtain input from the membership.

### New Business.

**Convention Proceedings.** Members asked if a convention proceedings had been considered. Iwata replied that it would be added to the Fall 1989 Council Meeting agenda for discussion.

**Reorganization.** Council members presented a history of reorganization discussions. In an effort to streamline the organizational process and to facilitate communication among the Committees, Task Forces, and other functions, reorganization was proposed. The proposed structure would group committees with related functions under a single board. The board coordinator would be responsible for monitoring activities and coordinating efforts to eliminate redundancy and increasing awareness of others' activities. The structure would also increase the opportunity for members to be directly involved in the Association because chairs and coordinators would be appointed from an open call for applications. Members had many questions about the proposal.

Given the small amount of time left for the meeting, it was decided that the President write an article for the next Newsletter on this topic.

**Executive Director.** Redmon reported that Council was also considering an executive director model and that a feasibility study would be conducted.

W. SCOTT WOOD MOVED TO ADJOURN THE MEETING. THE MOTION WAS SECONDED AND UNANIMOUSLY APPROVED.

<p>LOOK IN THIS NEWSLETTER FOR          Order form for the          International Network Directory          Graduate Training Program Directory          "Message from the President"          for details about Reorganization!</p>
---

**CALL FOR ABA MEMBERSHIP  
BOARD COORDINATOR  
APPLY NOW!**

As announced at the 1989 Convention in Milwaukee, ABA is undergoing a reorganization. The reorganization calls for (1) grouping committees with related functions into Boards; (2) appointing a Board Coordinator for each area; and (3) organizing communication and coordination of committee functions through a single Coordinator for improved integration. Six Boards have been identified, including (1) Administration, (2) Affiliated Chapters (National, Regional, State, Local), (3) Educational/Public Policy/Professional Affairs, (4) Membership, (5) Program, and (6) Task Forces. The plan will be implemented on a trial basis beginning in 1989-90.

The reorganization trial involves appointing only one new Board Coordinator and filling the remaining Coordinator positions with Executive Council members. The new position is that of MEMBERSHIP COORDINATOR. This person will oversee the functions of the following committees: Application. Review, Awards, International Development, and Membership Recruitment. The Coordinator is responsible for the following functions:

1. Maintaining regular contact with Committee Chairs for the Board and monitoring their progress.
2. Collecting semi-annual reports from Committee Chairs and summarizing all outcomes in an integrated report that is submitted to the ABA Executive Council.
3. Facilitating communication among Board committees so that duplication of effort is minimized and cooperation is facilitated.
4. Attending Executive Council meetings twice each year--once each fall and once at the annual Convention--to report on Board progress.

The term of appointment is three years. Candidates must be members of ABA. Those interested in this position should submit a letter of application by February 1, 1990. The letter should include at least the following information: (1) Candidate's name, affiliation, and address; (2) A summary of the reasons for applying for the position; (3) A summary of relevant experience and credentials of the candidate. The Executive Council will review all letters and appoint the Coordinator. Please send letters of application to William K. Redmon, Ph.D., Secretary-Treasurer, ABA, Western Michigan University, 258 Wood Hall, Kalamazoo, MI 49008-5052.

**TENNESSEE ASSN FOR BEHAVIOR ANALYSIS**

The Second Annual Meeting will be held Friday, October 27 and Saturday, October 28, 1989 at the Tri-Cities Airport Rodeway Inn (PO Box 1153, Blountville, Tennessee 37617) and the East Tennessee State University Campus. Please mark your calendar!

**General Program Outline.** October 26, 1989, 7:00PM-10:00PM, Rodeway Inn, Tri-Cities Airport. Welcome Invited Speakers, registration, cash bar. October 27, 1989. Morning/Afternoon, East Tennessee State University Campus. Invited Presentations by G.S. Bruce, S.M. Deitz, J. Eshleman, L.E. Fraley, R.D. Greer, G.W. Johnson, M.J. Marr, C.E. McDade, C.P. Olander, B. Stewart, E.A. Vargas, J.S. Vargas, P. Wishon, covering several topics which relate to Behavior Management and other interests, to Special Education, counselors and other afternoon Public School personnel. Evening, Rodeway Inn, Tri-Cities Airport. A poster session and the Lindsley-Graf Data Share and hands-on microcomputer demonstration. October 29, 1989, Morning. Breakfast; TABA Executive Committee Meeting; Check-out.

We hope to see you there!

**TEXAS ASSN FOR BEHAVIOR ANALYSIS**

On February 3-4, 1989, the Texas Association for Behavior Analysis (TxABA) held its 3rd Annual Conference, and its first Preconference Institute. The Preconference Institute was targeted to meet the needs of State employees working with mentally retarded clients in both residential and community-based centers. Under the leadership of Ed Hutchison (Denton State School), TxABA presented a very successful set of programs by nationally-recognized experts: J. Michael, "Basic Behavior Analysis"; A.J. Cuvo, "Community Living Skills Training: Acquisition, Maintenance, and Generalization"; R. Wetzel, "Designing Residential Teaching Environments"; S.S. Glenn, "Training in Behavior Analysis in Texas"; J. Todd (Chief of General Litigation, Texas' Attorney General's Office), "Legal Aspects of Delivering Behavioral Programming".

In spite of (for Texas!) a severe snow storm, over 150 people from State facilities attended the Institute. Participants were extremely complimentary about the usefulness of the programs and have indicated a continuing and strong interest in 1990's Institute again focusing on behavior analysis and the mentally retarded.

Saturday's program was the annual meeting of TxABA. TxABA invites addresses from a

keynote speaker and members that reflect the diversity of the members' interests. The presenters and topics were: J. Michael (Keynote Address), "But I Thought Behaviorists Aren't Supposed to..."; C. Hyten, "The Renaissance of Human Operant Research"; H. Karp, "Signal Detection Theory: A Behavioral Approach to Ambiguity"; S. Peacock, "Systems Management of Behavior Analysis in Applied Settings"; R. Rittenhous, "Community Homes for the Retarded: An Intern's View"; T. McSween, "Getting a 'Buy-in' at the Executive Level in Business". Following the last presentation, J. Greenspoon delivered his Presidential Address and E. Hutchison's election to TxABA's Council was announced.

At the business meeting, the membership voted to hold the 4th Annual Meeting and Preconference Institute later in the spring to avoid Dallas' notoriously inclement weather in early February. We hope you will join us next year!

### ANNOUNCEMENT

Are you interested in meeting with Chinese professionals in behavior analysis and psychology? PRC Ventures will arrange a trip to China for ABA members, with the meeting content to be planned by attendees. The anticipated cost is \$2,000 to \$3,000. If interested, contact William Redmon, Ph.D., Secretary-Treasurer, ABA, Western Michigan University, 258 Wood Hall, Kalamazoo, MI 49008-5052. If sufficient interest is expressed, further details about the trip will be published in the Newsletter.

### DENNIS C. RUSSO JOINS NEW MEDICO

Dennis C. Russo, an expert in the area of behavioral medicine, has been named Director of Behavioral and Pediatric Programming of the New Medico Head Injury System Post-Acute Division. Russo will supervise the development of New Medico's expanding behavioral and pediatric services, including clinical recruitment and state-of-the-art technology, coordinate the provision of psychological services, and foster professional research and training for behavioral psychologists.

Russo earned his Ph.D. from the University of California-Santa Barbara in 1975 and has published two books in the area of pediatric psychology and more than 50 articles in developmental disabilities and pediatric illness. He also served as Treasurer (1983-86) and President (1987-88) of the Association for the Advancement of Behavior Therapy. Russo became a member of ABA in 1989.

### BACK ISSUES OF THE BEHAVIOR ANALYST

Do you need to complete your set of  
THE BEHAVIOR ANALYST?

Use the form below to order missing issues!

#### Student and Individual Orders Only

Write the number of copies you wish to order next to the appropriate volume and issue number.

\_\_\_ US\$10.00 Vol. 1, No. 1 (first printing)

\_\_\_ US\$30.00 Vol. 1, No. 1, Vol. 2, No. 1,  
Vol. 2, No. 2 (bound together)

US\$\_\_\_ Dollar Amount of Above

\*\*\*\*\*

The following issues are US\$15.00 for each one ordered.

___ Vol. 3, No. 1	___ Vol. 3, No. 2
___ Vol. 4, No. 1	___ Vol. 4, No. 2
___ Vol. 5, No. 1	___ Vol. 5, No. 2
___ Vol. 6, No. 1	___ Vol. 6, No. 2
___ Vol. 7, No. 1	___ Vol. 7, No. 2
___ Vol. 8, No. 1	___ Vol. 8, No. 2
___ Vol. 9, No. 1	___ Vol. 9, No. 2
___ Vol. 10, No. 1	___ Vol. 10, No. 2
___ Vol. 11, No. 1	___ Vol. 11, No. 2
___ Vol. 12, No. 1	___ Vol. 12, No. 2

US\$\_\_\_ Number of Issues Ordered X US\$15.00

\*\*\*\*\*

US\$\_\_\_ Postage/Handling Charges:

1--5 issues: \$2.00, US; \$18.00, Air Mail  
6-10 issues: \$4.00, US; \$36.25, Air Mail  
11-15 issues: \$6.00, US; \$54.50, Air Mail  
16-20 issues: \$8.00, US; \$72.50, Air Mail

\*\*\*\*\*

US\$\_\_\_ TOTAL DOLLAR AMOUNT OF ORDER

Make check/money order payable to SABA.

\*\*\*\*\*

Mail to **SABA**, Western Michigan University,  
260 Wood Hall, Kalamazoo, MI 49008-5052.

Send journals to:

NAME \_\_\_\_\_

MAILING ADDRESS \_\_\_\_\_

## PREPARE NOW FOR 1990 CONVENTION TRAVEL CHEAP FLIGHTS AND GOOD PRECONVENTION INSTITUTES

The 1990 ABA Convention will be held at Opryland Hotel in Nashville, TN. When the original contract for the Hotel was negotiated, some rather unusual dates were booked in order to obtain a greater discount on the room rates. Typically, the Convention runs through one weekend and extends into the week on either side.

However, in 1990, the Convention will be held May 27-31. This means that the Convention begins on Sunday and extends through mid-day Thursday.

Preconvention Institutes begin Sunday, May 27, and continue through mid-day Monday, May 28. More workshops than in recent years will be scheduled on a variety of new topics. Plan to fly into Nashville on Saturday to take advantage of the cheaper flights (i.e., staying over one Saturday) and sign up for an Institute! Continuing Education credits may be obtained, if desired, for licensing renewal and other purposes. A list of the Institute offerings will be included in the ABA Winter Newsletter. Watch for it!!!

### 1989 SUSTAINING MEMBERS

Edward L. Anderson	Stephen Becker	Joseph V. Brady	Rita M. Curl
Aubrey C. Daniels	Michael J. Dillon	Janet Ellis	Barbara C. Etzel
Sigrid S. Glenn	Matthew L. Israel	Murray T. Kirkpatrick	Ogden Lindsley
Robert F. Littleton	Terry E. McSween	Henry S. Pennypacker	Elsie M. Pinkston
Gerald L. Shook	B. F. Skinner	Robert S. Spangler	J. E. Stone
Vincent Strully	Beth Sulzer-Azaroff	Eugene Talsma	Ernest Vargas

### 1989 SUPPORTING MEMBERS

Mark P. Alavosius	Charles C. Anderson	Betty K. Armstrong	Donald M. Baer
John A. Barlow	Beatrice H. Barrett	Sidney W. Bijou	John Bilbrey
Andrew S. Bondy	Paul K. Brandon	Cathy Breen	Charles A. Catania
Ken Chakiris	Shlomo I. Cohen	David A. Coleman, Jr.	Sidney N. Conner
James H. Cowardin	Chris Cullen	Joseph Ferrara	Jane E. Fisher
Suzanne Fitch	E. Scott Geller	Israel Goldiamond	Jon Gosser
Stephen A. Graf	R. Douglas Greer	Robert W. Griffin	Jeffrey C. Grip
R. Reed Hardy	Peter Harzem	David L. Holmes	Nan K. Holmes
Peter A. Holmes	Betsy C. Holomany	Bill L. Hopkins	John H. Hummel
William J. Ingram	Marie A. Jennings	Robert G. Jensen	Louise R. Kent Udolf
Anne S. Kupfer	Jeffrey H. Kupfer	Gerald Lachter	Ming Lai
Peter A. Lamal	Victor Laties	Maureen Laughead	P. Scott Lawrence
Judith LeBlanc	Ben Lignugaris/Kraft	Thomas Linscheid	David O. Lyon
Richard W. Malott	James F. McCoy	Donna M. Mills	Jay Moore
Edward K. Morris	James C. Morrison	Floyd J. O'Brien	J. Grayson Osborne
Bruce Paggeot	H. McIlvaine Parsons	Connie Pokalsey	Alan Poling
Gus Psara	Patrick C. Quinn	Jim Rast	Ellen P. Reese
Leo J. Reyna	Todd Risley	Wayne S. Robb	David L. Roll
Harris B. Rubin	Kurt Salzinger	William J. Schiller	Howard C. Schneider
William E. Scott	Richard L. Shull	Murray Sidman	Jeremiah A. Silliman
Howard Sloane	Henry Slucki	Lawrence T. Stoddard	Judith E. Stowe
Henry A. Tennenbaum	Travis Thompson	Kenneth Traupman	Robert G. Vreeland
Judith Weber	Nina C. Wilde	William D. Wolking	David J. Wurzer

#### October 1989

- 1 Winter Newsletter Submissions Due
- 13 Fall Council Meeting (Kalamazoo, Michigan)
- 30 Fall Newsletter received by all members

#### November 1989

- 1 Nomination Ballots Due in ABA office
- Winter Newsletter Advertisements Due
- 15 Program Submissions Due

#### December 1989

- 1 Program Book advertising copy due
- Exhibit Booths/Cooperative Book Exhibit Deadline
- 26 Convention Program Scheduling Notices sent to presenters
- 31 Early Membership Renewal Discount Ends

#### January 1990

- 2 Spring Newsletter Submissions Due

## THE "BEHAVIORAL BULLETIN BOARD"<sup>1</sup>

Richard W. Malott

(CIS #73547,1141)

Western Michigan University-Kalamazoo

### THE FANTASY

A wise man once said to me, "Suppose someone tells you a particular reinforcer is among the most reinforcing events he or she has experienced. Then you should try it at least six times, before giving up." He said this in the context of camping in the snow; let's change the context.

One of the most reinforcing activities I experience is telecommunication. You connect your computer to a modem, your modem to a phone line, and your phone line to an international electronic bulletin board (you can do the last step, by having your computer automatically dial CompuServe Informations Services).

I sometimes find myself spending from dusk 'til dawn telecommunicating. (Nowadays, few activities are so reinforcing they can keep me up from dusk 'til dawn.) This is one of the most compelling computer-based, intellectual-based, or social-based reinforcement systems I've been hooked on.

From the beginning, I fantasized about having a bunch of behaviorists at the other end of the bulletin board. Then I could at least rationalize this form of computer degeneracy as semi-professional work.

The fantasy is now becoming a reality.

### INTERNATIONAL BEHAVIORISTS OF THE WORLD UNITE!

Behavior analysts from around the world, you can now interact via computer, and at reasonable rates. You can join in a new intellectual (and nonintellectual) rap. You can state your opinion on abstract theoretical issues (e.g., molar vs. molecular analysis). You can ask practical questions (what's the best duration of a time out?). Then in a day or so, you can read the replies of the international behavioral community. You can reply to the opinions and practical questions of others (including nonbehavior analysts). You can reply. They can reply. You can reply. And you can do it all on the "Behavioral Bulletin Board" on CompuServe.

The CompuServe message system fascinates me. It contains a series of threads (a string of related messages). Each thread starts with an original message. People reply to that message. The sender of the original message and others then reply to the original replies. Others also reply to the

replies. On and on, as a fascinating electronic trail of intellectual interactions unfolds. If you're timid, you can just lurk and read without replying; but soon your fingers'll start itching and your key board sizzling.

How can you join this behavioral bash? First sign up for CompuServe. Then at the CompuServe prompt, "!", type "GO EDFORUM". Then join the forum. Enter your name in the membership directory, and include ABA as one of your interests. Then check out the messages in Section 13. The messages where the subject starts with "ABA:" should be the ones relevant to behavior analysis. If you start a new message thread, please type "ABA:" at the beginning of the SUBJECT query.

This may be the most important step for behaviorism since the founding of ABA or The Behavior Analyst. This fantasy may grow into something big and beautiful, as we ascend from our own message threads to our own section, to our own forum, with a section reserved for each of our SIGs, with live weekly forums where we ask questions of the superstars of behavior analysis, with libraries where we can upload and download preprints and reprints, and with a way for our committee members and for our council members to be in constant touch themselves and with the ABA membership. Then again, it may not. Help us avoid the consolation prize of "small is beautiful."

We look forward to seeing you on the "Behavioral Bulletin Board" in section 13 of CompuServe's EDFORUM.

Our thanks go to Sysop (System Operator) Chuck Lynd, CIS #76703,674, for his support on EDFORUM.

-----  
<sup>1</sup>We have submitted the "Behavioral Bulletin Board" to the ABA council for official recognition. In other words, we ain't there yet.  
-----

### WIN A FREE PRIZE

(he said redundantly)

We'll mail a free copy of Elementary Principles of Behavior, 2nd ed. (the latest preliminary version) to five replies selected randomly from the first week's receipt of questionnaires. So don't lose this in your to-do pile. Act now. Rip out this page. Fill out the questionnaire. Staple or scotch tape it closed. Stamp it. And mail it, today!

**THE COMPUTER SURVEY AND EASY ACCESS TO THE "BEHAVIORAL BULLETIN BOARD"**

1. Forget the "free gift." Yes \_\_\_\_ No \_\_\_\_
  2. I'm not a member of CompuServe and want to know how to join the "Behavioral Bulletin Board." Please send info. Yes \_\_\_\_ No \_\_\_\_
  3. I want to buy a cheap computer or cheap modem, and I'm so out of it I don't know anyone to ask for advice but you. Please send advice. Yes \_\_\_\_ No \_\_\_\_
  4. I'm a member of CompuServe. Yes \_\_\_\_ No \_\_\_\_
  5. I have a modem. Yes \_\_\_\_ No \_\_\_\_
  6. If it were available, would you use the following device in your presentations at ABA: an overhead projector you could plug into a computer to show graphics, tables, etc?  
Yes \_\_\_\_ No \_\_\_\_
  7. What types of computer equipment do you use? (e.g., IBM compatible, VAX, FAX, ten fingers, none) \_\_\_\_\_
  8. What telecommunications networks do you use? (e.g., BitNet, none) \_\_\_\_\_
  9. What general computer workshops or demonstrations would you like to attend at ABA? (e.g., outline processing, desk-top publishing, none). \_\_\_\_\_
  10. What behavior-analytic computer workshops or demonstrations would you like to attend at ABA? (e.g., computer-based training, self-management, none). \_\_\_\_\_
  11. What computer workshops or demonstrations would you like to present at ABA? (e.g., lab simulation, word-processing, none). \_\_\_\_\_
- Fold me more or less here-----

Stamp  
me here.

Name \_\_\_\_\_  
 Address \_\_\_\_\_  
 City, State, Zip \_\_\_\_\_  
 Country \_\_\_\_\_  
 CIS ID # \_\_\_\_\_  
           (if you're a member)

TO: Richard W. Malott, Ph.D.  
 Western Michigan University  
 Department of Psychology  
 Kalamazoo, MI 49008

Computer Users in ABA SIG and  
 The "Behavioral Bulletin Board"

## 1989 CONVENTION REVIEW

### Anniversary Epilogue

What started as an informal conversation at APA in August of 1988 about how to celebrate Fred Keller's 90th birthday evolved into an event to be remembered! That celebration and the commemoration of the almost 40th anniversary of the publication of Keller and Schoenfeld's Principles of Psychology could not have taken place or have been so successful without the participation, support, advice, patience, and cooperation of many individuals. Although I run the risk of omitting some names from this thank you note (I apologize to those in advance), I would like to acknowledge publicly the contributions of several people.

The very generous contribution of Edward L. Anderson enabled Nat Schoenfeld to make the long trip to participate in the festivities. Julie Vargas, in addition to all her other obligations, was instrumental in shepherding the proposal through the ABA Council and arranged a wonderful birthday banquet. Sharon Myers and Shery Chamberlain coordinated so many of the activities and were incredibly patient with the many questions, requests, and last minute rearrangements. Anna Saigh of the Hyatt Regency staff provided invaluable assistance with the special arrangements for the festivities and the banquet. The ABA Convention staff are to be commended for their willingness to assist in the banquet preparations far beyond what is usually requested and for the excellent esthetics. The staff of the Institute for Disabilities Studies at the University of Minnesota graciously handled an increased volume of telephone messages. Robert L. Thompson, no mean drummer himself, arranged for the jazz band that provided music at the reception. A number of individuals were particularly helpful and generous with advice, suggestions, and encouragement: Marc Branch, Charlie Catania, Sam Deitz, Kay Dinsmoor, Jim Dinsmoor, Brian Iwata, Ogden Lindsley, Jack Marr, Tony Nevin, Mac Parsons, Hank Pennypacker, Kurt Salzinger, Murray Sidman, Travis Thompson, and especially Don Cook. And finally, a note of appreciation to all the participants in the symposia, banquet, and related events.

**Request for Audiotapes and Photographs.** An audio and visual record of Fred Keller's 90th Birthday Celebration is being assembled. Please send copies of audiotapes of any of the symposia or addresses to Celia Wolk Gershonsen, University of Minnesota, Psychology Department, 75 East River Rd., Minneapolis, MN 55455.

The many photographs taken by the ABA volunteer semi-official photographer at ABA and the SEAB dinner were lost. Copies of any photographs taken at the banquet or any any of the symposia or at the SEAB dinner should be sent to the same address.

Thank you,

Celia Wolk Gershonsen

### A Special Thank You

Because of a dislocated thumb, suffered while on helpful duty in my home, it will not be possible for me to write individual thank-you notes to all of those whose presence (presents?) at my 90th Birthday Celebration made it such an unforgettable event, but I should like herewith to express my heartfelt gratitude to everyone who came (even if empty-handed). It was a happening beyond compare. Frances says so, too!

Affectionately, in ABA,  
Fred S. Keller

### Graduate Training Opportunities in Behavior Analysis

University programs displayed information about their training opportunities and representatives were available for discussion and information. Participating programs at the 1989 Convention were: The May Institute, Auburn University, Ohio State University, Queens College/City University of New York, University of Kansas, Utah State University, West Virginia University, and Western Michigan University.

### Behavior Analysis:

#### An International Perspective

The International Development Committee solicited poster displays of behavioral programs from countries other than the United States. This year, the display was presented with the Social Hour and Graduate Training Program Posters making it a festive and informative evening with displays from:

**BRAZIL. Verbal Cues of Modification in Components of Type A Behavior.** T.M.S. BRAGA, R.R. KERBAUY (Unv de Sao Paulo). **Analysis of Verbalizations of Psychologists and Children in Interactions during Different Activities.** A.M. FALQUEIRO, R.R. KERBAUY (Unv de Sao Paulo)

**DOMINICAN REPUBLIC. Research Program at the Dominican Behavioral Medicine Center.** F. MONEGRO (Unv Autonoma de Santo Domingo & Dominican Behavioral Medicine Ctr)

**IRELAND. Behavior Analysis in Ireland.** L. BAKER (Trinity Clg)

**ISRAEL. Behavior Analysis in a Child Development Center.** L. YULEVICH (Children's Diagnostic & Rehabilitation Ctr)

**ITALY.** Computerizing Training Curricula for Handicapped Children: A Strategy to Develop Functional Skills in Nonprofessional Practitioners. R. GENTILE, P. MODERATO (Univ of Palermo), O. PINO, G. PRESTI (Univ of Milano). Early Educational Intervention Project with Severe Handicapped Children: A Child Learning Center in Southern Italy. P. FILIPPELLO (Univ of Calabru), R. LARCAN, S. PEREINI, G. PITASI (Univ of Milano). From Expert Reading to Composing the Summary: Curriculum Proposals of Teaching. M. CAMMA, L. LOMBARDO, A. LO PRESTI, M.A. PIPITO (Univ of Milano). School Mainstreaming of Handicapped Children through Behavioral Methodologies: A Child Learning Centre in Sicily. L. BENEDETTO, M. INGRASSIA, L. LOMBARDO, A. LO PRESTI (Univ of Milano). The University as a Mediation Factor between Experimental Research and the Applied Field: "Il Progetto Handicap" in the Municipality of Milan. E. CARACCILO, R. FABIO, F. ROVETTO, F. TOSOLIN (Univ of Milano)

**MEXICO.** Effects of Textual Rules Options on Instrumental Performance in Conditional Discrimination Tasks. H. MARTINEZ, M. DOMINGUEZ, O. TENA (Natl Sch of Professional Studies). Behavior Analysis in Mexico: Human Learning Project. H. MARTINEZ, E. PENALOSA (Natl Sch of Professional Studies). Influence of Verbal Descriptions on Children's Conditional Discrimination Performances. E. PENALOSA, H. HICKMAN, M.L. CEPEDA, D. MORENO (Natl Sch of Professional Studies). Computer Programs for Conditional Discrimination Human Research. E. PENALOSA, H. MARTINEZ (Natl Sch of Professional Studies). Behavioral Programs Developed in MRUV. M.W. SALAS-MARTINEZ, D.G. FUENTES, D.L. CORDOBA (Univ of Veracruz)

**WEST GERMANY.** Diagnosis and Therapy of Reading and Writing Disability. E. NARAJEK (Private Practice-Kelkheim)

We would like to thank everyone who prepared and displayed information about their country, as well as everyone who attended the session. We hope to see you all again at next year's session!

Glen W. White, Coordinator

### Media Relations

News from the Media Relations activities is good. Once again, we had a functional Press Desk, thanks to the diligent work of Jeanne LaMere, the Press Desk Coordinator, and the ABA members who contributed press releases and articles of newsworthy interest about ABA and behavior analysis. These items were available to the Milwaukee media and to Convention attendees. We are pleased to say that several media representatives in the Milwaukee area were interested in the Convention and contacted us on many occasions.

"An Exclusive Interview with B.F. Skinner" headlined the Milwaukee Weekly, a newspaper delivered free to area residents. Assuredly, many of the readers learned about Skinner and his views on the "behavior control" topic with which so many of us are familiar. Some typical and greatly misunderstood ideas about behavior analysis were addressed in this interview, including behavior control by drugs, brainwashing, lobotomies and shock therapy. Excerpts from the interview follow:

**MW:** How do you compare your utopia in Walden Two to Brave New World and 1984?

**BFS:** Brave New World is a satire, a dystopia, and so, of course, was 1984. 1984 was a vicious attack on government oppression and whatnot. Actually, Brave New World is based on Pavlovian conditioning, which is quite different from what we call operant conditioning. course, Huxley eventually got around to describing another utopia in a book Island, and that was one where he was going to use drugs to make people more cooperative.

**MW:** What do you think of Karl Marx?

**BFS:** He was a kind of utopian, although he hated utopia, you know. He'd say you'd bring about a better world by the struggle of the masses and the labor and so on--which hasn't worked out, because Russia has never been able to motivate the workers. Working for the common good is boring....You've got to work for something they can see is improving them right now. That was the mistake of Marx--he'd like people to live for their good, but the good was too far away, which is what we behaviorists call reinforcement.

**MW:** What do you think of Freud?

**BFS:** I don't think Freud had anything more than a wild imagination....All it takes is a good literary style--Freud's a great writer, no doubt about it....But he changed his theories because he found that the idea that everybody had been seduced by his father or mother wasn't palatable anymore. I don't know, I don't care. I don't believe that it is a useful form of theory--for one thing, as therapy it's much too costly, you've got to have a million analysts for six million people.

**MW:** Why do you call yourself B.F. instead of your full first and middle names...?

**BFS:** I wrote a letter home from camp when I was about 13 and signed it "B.F. Skinner." When I was at Harvard, I noticed that all the theologians used their full names, and all the physicists used just their first two initials--well, I was somewhere in between, and I decided to be on the side of the hard scientists.

All in all, the article was interesting and thought-provoking. We thank the editors of the Milwaukee Weekly for their extensive coverage of Skinner and his views. We also extend our gratitude to Harry Wasserman, a contributing reporter for the Weekly, who conducted the interview. The accurate and unbiased reporting is commended.

Susan Goeters, Coordinator

### Placement Service

The ABA Placement Service operates at the Convention. Summaries of applicants' experience and position requirements are posted for review. Registered applicants can ask for a complete copy of the position description for review, and registered employers can request a copy of the applicant's resume for review. Extra copies are available for those who wish to take one.

	1989	1988
Applicants Registered	16	19
Doctorate	11	16
Masters	4	3
Bachelors	1	0
Employers Registered	37	48
Positions Listed	77	95
Doctorate	33	30
Doctorate/Masters	14	19
Masters	19	24
Masters/Bachelors	1	7
Bachelors	10	15



As always, the number of available positions was far greater than the number of applicants. If you are seeking a position at the 1990 Convention, please remember the Convention Placement Service!

Vicky Pellettiere, Coordinator

### Poster Sessions

Certificates of Merit are awarded to posters in each Specialty Area based on (1) Scientific Merit. The results add to the existing body of behavioral research through a carefully executed study which is methodologically sound with no serious design flaws that would render the results questionable, and (2) Effective Use of the Poster Medium. Clear and concise presentation of the procedure, data and results; minimal prose reading or vocal presentation are required for understanding. This year, the following posters received a Certificate:

**AUTISM.** Effect of a Peer Modeling on the Acquisition of a Discrimination Task by an Autistic Boy. P.M. DAoust, A. ROLIDER (Surrey Place Ctr). Can a Diagnosis of Childhood Autism Prejudice School Mainstreaming? S. EIKSETH (Unv of Kansas) D. GRANPESHEH (Unv of California). Teaching Written Composition Skills to Autistic Children. M.K. ROUSSEAU (City Clg), P.J. KRANTZ, M. KITSON, C. TELLER (Princeton Child Development Inst), C.L. POULSON (Queens Clg), L.E. McCLANAHAN (Princeton Child Development Inst)

**BEHAVIORAL MEDICINE.** Teaching Control of Quadriceps Muscle Activity in a Patient with Chronic Knee Pain Using EMG Biofeedback with a Changing Criterion Design. Z.G. SIGURDAROTTIR, R. POPPEN (Southern Illinois Unv)

**CLINICAL.** A Sequential Alternating Treatments Design. D.P. WACKER, C. McMAHON, M.W. STEEGE, W.K. BERG, G.M. SASSO, K. MELLOY (Unv of Iowa)

**COMMUNITY LIVING SKILLS.** Antecedent Cue Regulation: The Use of Written Task Analyses and Picture Prompts as a Self-Management Strategy to Teach Health Care Skills to an Anoxic Brain Injured Adult. M.F. O'REILLY, A.J. CUVO (Southern Illinois Unv)

**DEVELOPMENTAL DISABILITIES.** Evaluation of the Multiple Effects of a Social Skills Intervention: Response Generalization, Response Covariation and Collateral Effects. C.M. McMAHON, D.P. WACKER, G.M. SASSO, K. MELLOY (Unv of Iowa). Entry-Level Employees as Trainers for New Workers with Mental Handicaps. R.M. CURL, D.P. DeFRANCESCO, E.K. McCONAUGHY, C.L. SALZBERG (Utah State Unv). Longterm Maintenance and Generalization of First-Aid Skills by Handicapped Youths. N.E. MARCHAND-MARTELLA, R.C. MARTELLA (Utah State Unv), S. PATTAVINA, T. BERGSTROM (May Inst). Family Style Dining: Skill Acquisition During Group Training Procedures for the Profoundly Handicapped. D. SOTTOLANO (ACES), L. WATSON, S. JOHNSON, C. JENSEN (Fircrest Sch)

**EDUCATION.** A Demonstration of Generalization with Students Who are Profoundly Mentally Retarded/Multiply Handicapped. W.K. BERG, D.P. WACKER (Unv of Iowa), B. WIGGINS, B. WIGGINS, M. FOWLER, P. WILKES (Des Moines Public Sch). Comparison of Short- and Long-Form Guided Notes in a Social Studies Class for At-Risk and Learning Disabled 7th-Graders. F.H. COURSON, W.L. HEWARD (Ohio State Unv). Peer Tutor Training: Using Positive Programming to Improve Classroom Behavior in a Handicapped Adolescent. R.C. MARTELLA, N.E. MARCHAND-MARTELLA, C.A. MACFARLANE, K.R. YOUNG (Utah State Unv), K.J. ROUNDY,

C.Y. LONG (Cache County Schs). A Systematic Analysis of Peer Interactions of Elementary-Aged Students with Learning Disabilities. D.E. ORMSBY, D.E.D. DEITZ (Educational Rsrch & Svcs Ctr). Assessing the Functional Properties of Behavior in the Classroom. G.M. SASSO, T.M. REIMERS, L.J. COOPER, D.P. WACKER, M.W. STEEGE, W.K. BERG, A. ALLAIRE, L. KELLY (Unv of Iowa)

### EXPERIMENTAL ANALYSIS OF BEHAVIOR

**HUMAN.** On the Context of Discover in Experimentation with Human Subjects: Effects of Instruction Source, Instruction Format, and Relationships Between Instruction Demands and Task Demands. F.C. CAPOVILLA, P.N. HINELINE (Temple Unv). Effects of Payment on Saying and Doing. D.T. CERUTTI, P.N. HINELINE (Temple Unv). A Procedure for the Experimental Analysis of Verbal Self-Reports. T.S. CRITCHFIELD, M. PERONE (West Virginia Unv). Effects of Ethanol on Response Sequence Acquisition and Performance with Response Rates Equated in the Two Conditions. S.T. HIGGINS, W.K. BICKEL, J.R. HUGHES, C.R. RUSH, S. PEPPER, M. LYNN (Unv of Vermont). Signal Detection Analysis of Human Sensitivity to Fixed-Ratio Reinforcement Schedules: Methodological Issues. T.G. MATTHE, A.M. WYLIE, W.S. WOODS, L. TUMA, M.P. LAYNG (Mankato State Unv). Imitative Acquisition of Equivalence in Children. R. MICHAEL, D.J. BERNSTEIN (Unv of Nebraska). Precurrent Operants: A Beginning Analysis. D. POLSON (Unv of Victoria). The Apparent Facilitation of Classification via Stimulus Naming. K.J. SAUNDERS, R.R. SAUNDERS, J.E. SPRADLIN (Bureau of Child Rsrch)

**NONHUMAN.** Changeover Delays and Interchangeover Responding. L.A. ALFERINK (Illinois State Unv), M.D. BOSCH (Drake Unv). The Effects of Superimposing Response-Dependent CRF and Yoked Response-Independent Reinforcement on Fixed-Ratio Baselines. P. CUNNINGHAM (Mankato State Unv), K.A. MEYER (Unv of Hawaii), K. CAIRNEY, A.M. WYLIE, L. KELLEY (Mankato State Unv), M.P. LAYNG (Enabling Technologies). Effects of Superimposing Response-Dependent CRF and Yoked Response-Independent Reinforcement on Fixed-Interval Baselines. T.G. MATTHE (Mankato State Unv), W.S. WOODS (Chicago Sch of Professional Psychology), A.M. WYLIE, P. OVERLIE (Mankato State Unv), M.P. LAYNG (Enabling Technologies). Key Pecking of Pigeons under Variable-Interval Schedules of Briefly-Signaled Delayed Reinforcement: Effects of Signal/Food Correlation and VI Value. D.W. SCHAAAL (Unv of Minnesota), M.N. BRANCH (Unv of Florida). Stimulus Compounding and Resistance to Change in a Multiple Fixed-Ratio Schedule. R.D. TORQUATO, R.L. SHULL (Unv of North Carolina)

**FAMILY.** Functional Analysis: The Implications of People Stimulus Control. A. CUMMINGS, B. THURSTON, A. ROLIDER (Surrey Place Ctr). Training "Parental Bonding". D. LYNCH, B.J. COWLEY, T. PHAM, M.L. KESSLER, B.F. GREENE (Southern Illinois Unv)

**GERONTOLOGY.** How do Elderly People Live Their Everyday Lives? A Behavior Mapping Study. M.M. BALTES, H.W. WAHL, U. SCHMID-FURSTOSS (Free Unv of Berlin)

**HEAD INJURY.** Effects of Overlearning and Stimulus Similarity on Head Injured Clients: Generalization and Maintenance of Social Skills. F.D. LEWIS (New Medico Assc). Behavioral Strategies for the Management of the Aggressive/Combative Patient. D. RAB-WILSON, L.A. LEAHY, C.A. RATTI (Columbus New Medico)

**ORGANIZATIONAL BEHAVIOR MANAGEMENT.** Let Our Conscience Be Your Guide: A System to Help Graduate Students Complete Research Projects. J. AGNEW, J.A. PARSONS (Unv of Victoria). Pay for Performance. J. JOHNSTONE, D. TREFSCAR, S. BERG, J. KAUFMAN, B. JONES, P. DUNCAN (West Chester Unv). The Development of a Simulation to Examine Worker Preference for Monetary Incentive Systems. S.Z. OAH, A.M. DICKINSON, J. MICHAEL (Western Michigan Unv). A Daily-Adjusted Goal Setting and Feedback Procedure for Performance Management: Follow-up Data. L.A. WILK, W.K. REDMON (Western Michigan Unv)

**PHARMACOLOGY/TOXICOLOGY.** Effects of Cocaine on Responding Under Extinction in the Presence and Absence of Conditioned Reinforcement. F.J. FILES, M.N. BRANCH (Univ of Florida). Control By Response Number Under a Targeted-Percentile Schedule of Reinforcement. G. GALBICKA, K.P. LEACH, Z. RITCH, T. COLEMAN (Reed Army Inst of Rsrch). Delayed Reinforcement by Food and Cocaine Produce Similar Effects. L.R. GOLLUB (Unv of Maryland), H.D. EVERIST (National Inst on Alcohol Abuse & Alcoholism). Buprenorphine and Methadone Effects on Progressive Ratio Responding. M.J. MACENSKI, J.P. CLEARY, T. THOMPSON (Unv of Minnesota). Further Characterization of the Discriminative Stimulus Effects of Bupirone. M.A. NADER (Unv of Chicago), S. HOFFMANN, S. GLEESON, J.E. BARRETT (Unv of the Health Sciences)

**SPORT BEHAVIOR ANALYSIS.** The Application of a Behavioral Intervention to Improve Athletic Performance Amongst 12-Year Old Boys Playing Baseball: A Preliminary Study. P.M. DAoust, S.L. HAMM (Surrey Place Ctr), D.T. ROEHLER (Brampton Minor Baseball Inc)

**STAFF INTERVENTIONS/HUMAN SERVICES.** Mediator Training: The Role of Stimulus Control Variables in the Generalization of Staff Programming Skills. J.M. DUCHARME, M. FELDMAN (Surrey Place Ctr). The Effects of Self-Recording and Reporting on Permanent Product Service Data on the Quantity and Quality of Community Behavior Therapist's Consultations to Agencies for the Developmentally Delayed. W.L. WILLIAMS, B. LLOYD, B. SPARKS, K. CROZIER, J. STANHOPE, D. BROWN, J. HODGES (Surrey Place Ctr)

**VERBAL BEHAVIOR.** Acquisition and Generalization of Complex Grapheme/Phoneme Textual Units through Reinforcement of Whole Word Units. D.G. DE SOUZA, J.C.C. DE ROSE, O.M. KUBO, M.A.C. LIBORIO (Unv Federal de Sao Carlos)

Congratulations to the recipients, and thank you to the judges who undertook such a difficult task during the Convention.

Ken Alling, Brian Cole, Bill Potter  
Coordinators

#### ABA Social Hour

ABA Committees, Task Forces, Affiliated Chapters, and Special Interest Groups displayed information about their current and planned activities. Participating at the 1989 Convention were:

**Committees.** Student, I.S. Schwartz.

**Task Forces.** Professional Development of Women, A.M.I. Montes, B. Von Seggern, A.E. Wilson, K.C. Kirby.

**Special Interest Groups.** OBM Network, C.M. Johnson. Verbal Behavior, M.L. Sundberg.

**Affiliated Chapters.** Northern California Association for Behavior Analysis, M.A. Powers, V. Tucci, R. Vreeland, R. Detrich, P.L. Whang-Ramos. Behavior Analysis Society of Illinois, M. Lenz. Southeastern Association for Behavior Analysis, M.J. Marr, K.A. Lattal, P.S. Lawrence, A. Hatten

#### Volunteer Desk

Thank you to everyone who volunteered during the Convention as Session, Volunteer Desk, Institute, Press Desk Monitors, or in other areas. Your efforts are greatly appreciated and contributed to the smooth operation of another successful ABA Convention!

Valerie Davine, Angela Duarte, Lisa  
Largo, Claudia Pacheco, Coordinators

## PROGRAM COMMITTEE UPDATE

M. Michele Burnette, Chair  
Western Michigan University-Kalamazoo

Plans for next year's convention program are already in full swing. Several invitations for symposia, Preconvention institutes, and invited addresses have already been extended. Of those invited, Jack Michael has agreed to give a Preconvention institute on Motivation and Emotion; Alan Poling will give a Preconvention institute on Psychopharmacology and Mental Retardation; Randy Keyworth and colleagues from Spectrum Center in California will conduct a symposium on Performance Management in the Human Services; and Bob Pilon, also of Spectrum Center, will conduct a Preconvention institute on Grant Writing.

Another major thrust has been on improving the level of input that AREA COORDINATORS have in the program. This year, I will be sending letters to the coordinators asking that they select the invited speakers for each area. Thus, individuals who are most well-informed about the major contributors to the particular area will be making those choices. In addition, I hope to improve the overall communication level between the coordinators and the Chair so that I can be more responsive to the needs of each area.

As you may have already noticed, we have revised the Call for Papers. (If you have not yet received your copy, call the ABA office.) Great efforts went into making all instructions as clear as possible. Your feedback on this year's "Call" would be greatly appreciated. Allow me to emphasize a few features. First, all individuals submitting an address are being asked to select their own chairpersons. We feel this is an important change for several reasons, the primary reason being that past speakers have indicated a strong preference to have someone they know, and who knows them and their work, to introduce them. A second change is that a 100-500 word summary, along with the appropriate forms, is all that is required for submission this year. Although full papers are not required, the Media Relations Coordinator would appreciate receiving your paper for the Press Booth files at the Convention. We would also like to encourage you to bring paper summaries to the conference to share with your audience.

Finally, the ONLY submission deadline for convention participation is November 15, 1989. So get your submissions in. Remember, YOU make the conference. We just organize!

I look forward to seeing you in Opryland.

## AVAILABLE FROM THE ASSOCIATION FOR BEHAVIOR ANALYSIS

DIRECTORY OF GRADUATE TRAINING PROGRAMS IN BEHAVIOR ANALYSIS. Compiled by the Student Committee, the Directory lists opportunities emphasizing a behavior analytic approach to a variety of professional endeavors (Programs and Traineeships, Areas of Emphasis, Research Facilities and Practica, Predominantly Behavioral Courses, and Faculty).

INTERNATIONAL NETWORK OF BEHAVIOR ANALYSTS. Compiled by the International Development Committee, the Directory contains behavior analysts around the world, as well as specific information from survey responses, including Settings and Populations, Professional Activities, Countries of Interest, Professional Interests, and Information of Interest.

ABA MEMBERSHIP DIRECTORY. A listing of 1989 members' names and addresses.

POSTCARDS. A packet of six postcards with portraits of F.S. Keller, M.C. Jones, J.R. Kantor, I.P. Pavlov, B.F. Skinner, and J.B. Watson.

PEDAGOGUE'S PROGRESS, F.S. Keller. A neglected classic available from ABA! A beautifully written critique, both humorous and bitter, of the educational establishment by one who spent many years trying to reform the system from within. Buy a copy for yourself, and several more for your friends! Purchase Price: US\$10.00 (includes \$1.50 shipping/handling). Proceeds from the sale go to Professor Keller.

### TASK FORCE REPORTS

Task Force on Regulatory Issues: Review of the 1990 Standards on Behavior Management of the Accreditation Council on Services for People with Developmental Disabilities  
Task Force on the Right to Effective Behavioral Treatment

### ORDER FORM\*

	# of Copies	Price/ Copy	Amount
Graduate Training in Behavior Analysis	_____	x \$ 7.00 =	\$ _____
International Network of Behavior Analysts	_____	x \$ 7.00 =	\$ _____
Membership Directory	_____	x \$10.00 =	\$ _____
Pedagogue's Progress	_____	x \$10.00 =	\$ _____
Post Cards	_____	x \$ 1.95 =	\$ _____
Task Force on Regulatory Issues: Review of the 1990 ACDD Standards on Behavior Management	_____	x \$ 1.50 =	\$ _____
Task Force on the Right to Effective Behavioral Treatment	_____	x \$ 1.50 =	\$ _____

\* All prices include shipping/handling charges. All orders subject to availability.

TOTAL AMOUNT OF PAYMENT ENCLOSED	\$ _____
----------------------------------	----------

Send order & payment (Visa, Master Card, check, money order; payable to ABA, U.S. funds only) to: ABA, Sharon Myers, Western Michigan Univ, Kalamazoo MI 49008-5052.

VISA or MASTER CARD # \_\_\_\_\_ EXP. DATE \_\_\_\_\_

SIGNATURE \_\_\_\_\_

SEND TO: \_\_\_\_\_

MAILING ADDRESS: \_\_\_\_\_

## ABA WELCOMES NEW 1989 MEMBERS!

**Adjunct.** Mary M. Gleason, Howard D. Levine, Suzon B. Lowe, William Uhlman

**Affiliate.** Angela R.N. Amado, Linda Armendariz, James S. Bastien, Toni R. Bell, Nancy Bengtson, Phillip T. Blackshear, Blare House Inc, James W. Bodfish, Bridget A. Borsa, Dawn Brown, Tracy L. Cartas, Barbara Carty, Shirley A. Chrisman, Guadalupe Coll, Anne Colombo, Mary Conlin, Betsy J. Constantine, Maria da Piedade Costa, Kimberley J. Crozier, Anne Cummings, Diane L. Davis, Diane E.D. Deitz, P.J. Malcadac Dolney, John Donahoe, Carroll Drummond, Joe Ducharme, Larry Dupree, Christine Evans, Sherry H. Forsyth, Paul Gallant, Jorge Garcia, Rita M. Gardner, Maria Garrick, Sarah Hadden, Tracey E. Hall, Shannon Hamm, Chris J. Hansen, Leslie Heale, Ted Ho, Daniel Houlihan, Sherrill A. Hunt, Laurie Kellogg, Naohiro Kaneko, Catherine Labianca, Michael Layng, Mary P. Leonardi, Ruth Lloyd, David Lubinski, Teresa Lucia, Armando Machado, Peggy Macrae, James Madison, Gabriela R. Mallo, Sandi Marisdotter, Brian K. Martens, Malcolm McCullough, Carol McFall, Ann McGlynn, Earl R. McKenzie, Mary Alice McLean, Suzanne Meagher, Sylvia Mertens, Thereza P. de Lemos Mettel, Terry R. Miller, Utahnah C. Miller, Yumiko Mishii, Diana Moniz, Leslie Nall, David P. Nick, Pamela Norwood, Thomas J. O'Connor, Yvonne M. O'Connor, Maressa H. Orzack, Karen C. Owen, Sylvia R.G. Panico, Maureen Parkinson, Lisa Pennock, Robert Pilon, Rick Raymer, Martisa G. Register, Stanley E. Register, Susan D. Robertson, Dennis C. Russo, Melanie Schaefer, Scott N. Schrum, Thomas L. Sharpe, Jr, Nancy H. Shroyer, Jeffrey Smith, Lisa Smith, Peter Smith, Vivian Snapper, Bruce Sparks, Lisa F. Steege, John C. Sturr, Brenda Thurston, Cal Tracey, Michael Tunnecliffe, Cora Lee Wetherington, Bernadette Whelan, W. Larry Williams, LuAnn Wilmeth, Sharon W. Wilmotte

**Emeritus.** Nathan Stemmer, Glenn V. Sundquist

**Full.** Victor A. Arredondo, Jacob Azerrad, Judith V. Becker, Diane M. Boriero, Vicki S. Canipe, Anthony D. Delbove, Mike Dorsey, John Falk, Wayne Fisher, Jacob Gewirtz, Andrew A. Glover, John W. Jacobson, Peter C. Kaminski, Debra Kamps, Kathryn G. Karsh, James P. Kohn, Jan J. Larson, Mark L. Lazarus, Barbara Mallette, Sandra G. Miller, Catherine Millichamp, James S. Newton, Roger L. Olsen, Dennis R. Olvera, Timothy J.H. Paisey, Dennis Rawlings, Elliot Roth, George Semb, Robert A. Sherman, Nino M. Silva, Virginia Velasco-Ariza, Janine E. Watson, Lars Watson, Carlene Wilson, Elizabeth A. Wilson

**Student.** Barbara Adams, Judy L. Agnew, Matthew J. Aguiar, Naiel Albkower, Michael Alessandri, Michael Alspaugh, Dawn A. Amonte, Susan Andersen, Julie Apoid, Erik Agustson, Karen Agustson, David J. Avery, Allyson C. Azgrraga, Armin Bader, William A. Balliet, Patty Barbetta, Dermot Barnes, Douglas R. Barnes, Therese Barnett, Brenda Bathum, Ken Bell, Loredana Benedetto, Deanna Bernstein, Kamaljit K. Bhandal, Karen J. Bilter, Edward R. Blaskowski, Jeffrey C. Borchardt, Rudi Borst, Diane S. Braatz, Roxanne K. Braden, A. Lynn Bradshaw, Nancy C. Brady, Orn Bragason, Mary-Claire Brett, Ken Brown, Lauri Browski, Sandra Burdick, Kim Cairney, Fred Calovich, Cynthia Campbell Ming, Rori Carson, Weptanomah Carter, Dennis Cavitt, Sing Wa Chung, Christine A. Claubaugh, Charalampos Cleanthous, Daniel Cohen-Almeida,

Robert T. Connor, Duane P. Conrad, Joni Cook, Linda J. Cooper, Eduardo Corsi, Janet S. Coster, Brian J. Cowley, Jose-Herman Cuadros, Maria C. Cull, Mary L. Cummin, Frances J. Currier, David Cush, Yvonne daSilva, Carol Dahlquist, Valerie Davine, Janice Derrickson, Keith Dillard, Lisa K. Donn, Donald M. Dougherty, Katherine L. Dryden, Erin P. Dugan, Kathleen Dwyer, Svein Eikeseth, Dan E. England, Marianne Engle, Robert E. Evans, Bobby Faucette, Sandy Freeman, Robert C. Garland, Deborah Garrity, Bagher B. Ghobary, K. Elizabeth Gierich, Susan Gilbert, Presti Giovambattista, Shawn Gorman, Michele Goss, Doreen Granpeesheh, Patrick Gray, Susan K. Green, Dennis Greene, Theresa Habib, Gloria Haddad, Kim Hamby, Mary J. Harrison, Richard T. Harrison, Angela Hascall, Jim Haugh, Amy J. Hayes, Connie Hayko, Linda K. Haymes, Michelle Hecht, Shelly L. Hemmess, Riki Hinson, Michele S. Hirsch, Cheryl C. Holden, Herschel D. Horn, Jason Hunter, Suneeta Jagtiani, Alison A. Janes, Christine Jarvis, David C. Jewett, Kelly Johnson, Allen D. Jones, Jennifer Jones, Robert D. Jones, Beth Joseph, Laura Kelly, Anita Kemper, Laura A. Kenneally, Susan M. Kent, Durriyah Khorakiwala, Kim Killu, Damodar Kini, Sandor Koblos, Ahm Kop-Sloots, Karis A. Kopp, Craig Kovera, Charlene Krueger, Arleen Lanci, J. Landeira-Fernandez, Cecile Lardon, Marie Larkin, Leslie Lauth-Torres, Kelly A. Leary, Elizabeth Letourneau, Steven P. Lewis, Regina Lipkens, Pamela Loik, Laura G. Lubotsky, Veronica Luna, Deirdre Lynch, James Lyons, Howard Mabry, Caroline Magyar-Weiss, Monica Malcein, Cynthia Mansfield, Patrick Marchioni, Dennis Mattes, David McAdams, Janet McMahan, Kristine Melloy, Janet P. Melson, Jeff Mikorski, Betty Miller, Pamela B. Millsap, Marion Moore, Frank Moreland, Nancy A. Morrison, Alysa M. Muller, Nancy A. Mundschenk, Clodagh Murphy, Todd Nadeau, Ryuichi Nakanishi, Bruce E. Nerenberg, Lisa Neuson, Pam Neville, Robert Newman, James Noll, George T.M. Okuhara, Mark F. O'Reilly, Michael Ostrosky, Paul E. Overlie, Claudia Pacheco, Marie Parnes, Martha Pelaez-Nogueras, Heather Pendell, Siro Perera, Carla A. Peterson, Gabrielle Pisano, Paul Rabbideau, Pam Renno, Joseph H. Ricker, Pamela Rizzuto, Steve Roberts, Susan L. Roberts, Michael Rock, Rochelle Rodriguez, Jeff Rudski, Craig Rush, Evangeline Sakkas, Carl Schick, Michael Schlund, Scott Schneiderhan, Daniel Schroeder, Kory Schuh, David Schulta, Barbara Schwartz, Mariana S. Searle, James R. Senn, Carole Shelton, Tom Sherburne, Pamela S. Shirey, Shannon B. Shull, Holly Sik, Joy L. Sindelir, Michelle R. Smith, Richard Smith, Todd Soutor, Virginia Soyars, Shari Spence, Richard Spiluzza, Ramona L. Springis, Ange D. Steigert, Cynthia Steinbeck, Stephen Sundby, Carolyn Talbert, Laura Tarr, Doug Thompson, Richard Torquato, Judith Torvinen, Mary E. Tota, Janet S. Twyman, Mike Urbach, W. Van Catterall, Cynthia L. Vance, Tina Verlinden, Richard P. Waits, Jacki Walker, Richard D. Weissman, Robert E. Wheeler, Vickie H. White, Will Wilkinson, Robyn A. Willock, Lori Winter, Anna M. Wise, Mark Yasenchack, Matthew Zagumny

**Supporting.** Ken Chakiris, David L. Holmes, William J. Ingram, Marie Jennings, Maureen Laughead, Bruce Paggeot, Gus Psara, Patrick Quinn, William J. Schiller, Jeremiah A. Silliman, Nina C. Wilde

**Sustaining.** Stephen Becker, Murray T. Kirkpatrick

Whose name would you like to see here in 1990? Use the form below to send the name and address of a possible NEW MEMBER to Sharon Myers, ABA, Western Michigan University, 258 Wood Hall, Kalamazoo, MI 49008-5052.

Name \_\_\_\_\_

Address \_\_\_\_\_

City \_\_\_\_\_ State \_\_\_\_\_

Country \_\_\_\_\_ Zip Code \_\_\_\_\_

# MEMBERSHIP AND REGISTRATION DATA

William K. Redmon, Secretary-Treasurer

At the bottom of this page is a summary of membership data and convention registration figures. Several trends are noteworthy. First, it appears that the total number of members from outside the USA is increasing gradually. Much of the credit for this is due to the International Development Committee's recruitment efforts. Convention registration varies considerably from year-to-year; this is a function of the location of the Convention as much as anything. The most recent high level occurred in Philadelphia (1,429) where we were able to draw a large number of local attendees from the surrounding area. Membership and registration data

are also presented by state for those from the USA. Again, membership appears to be increasing slightly across years. However, we observed a reduction in total membership from 1988 to 1989, for the most part due to the change in convention site. Greater convention attendance in Philadelphia brought with it an increase in membership because many became members when they attended the Convention. Many of these, however did not renew their membership for the following year. In general, our membership and Convention attendance are increasing slightly or remaining stable over the years. However, we have not enjoyed large increases in either category over the past few years. We need your help to recruit and maintain new members!

COUNTRY	MEMBERSHIP					REGISTRATION				
	1989	1988	1987	1986	1985	1989	1988	1987	1986	1985
AUSTRALIA	7	8	5	9	2	2	2	1	4	0
BELGIUM	1	2	1	0	0	0	1	1	0	0
BRAZIL	9	13	6	13	6	8	5	10	5	2
CANADA	76	67	62	66	77	51	45	53	39	39
CHILE	0	0	0	0	0	0	0	0	1	0
CHINA	1	0	1	0	0	0	0	1	0	0
COLUMBIA	1	2	1	1	1	0	0	0	0	0
COSTA RICA	0	0	0	1	0	0	0	0	1	0
DOMINICAN REP	2	2	2	1	1	0	0	0	0	0
FRANCE	1	2	1	1	2	0	0	0	0	0
GREECE	1	1	1	1	0	0	0	0	0	0
GUADALAJARA	0	0	0	0	1	0	0	0	0	0
ICELAND	0	0	1	0	0	0	0	1	0	0
IRELAND	2	1	1	1	0	0	0	1	0	0
ISRAEL	2	2	0	0	2	2	2	0	0	2
ITALY	5	13	1	1	1	1	1	0	0	0
JAPAN	16	15	10	8	11	6	6	5	4	7
JORDAN	0	1	0	0	0	0	0	0	0	0
KOREA	1	0	0	0	0	0	0	0	0	0
MEXICO	6	4	3	2	0	5	4	4	1	0
NETHERLANDS	4	4	2	1	1	3	3	1	2	0
NEW ZEALAND	1	3	0	0	2	0	4	4	0	2
NORWAY	2	2	1	2	0	0	1	2	2	0
PERU	2	3	0	0	0	1	4	0	1	0
PORTUGAL	2	1	1	1	1	1	0	0	0	0
PUERTO RICO	2	2	1	0	1	1	0	0	1	1
SAUDI ARABIA	1	0	1	1	1	1	0	1	0	0
SPAIN	1	2	2	0	0	0	1	0	0	0
SWEDEN	2	3	2	4	3	0	1	1	1	0
UNITED KINGDOM	7	7	3	3	3	3	2	1	3	1
UNITED STATES	1842	1927	1731	1712	1713	1166	1340	1272	1287	1187
URUGUAY	0	0	0	0	6	0	0	0	0	0
VENEZUELA	1	1	1	1	1	0	0	1	0	0
WEST GERMANY	11	12	6	10	4	3	3	4	4	2
UNKNOWN						3	4			
TOTAL	2009	2100	1847	1840	1840	1257	1429	1364	1356	1243

## CONTACTS FOR INFORMATION SHARING

**Autism SIG.** JAN WEINER, Univ of California, Special Education Dept, Santa Barbara, CA 02906

**Behavior Analysis of Child Development.** GARY NOVAK, California State Univ-Stanislaus, Psychology Dept, Turlock, CA 95380; ROSS VASTA, State Univ of New York, Psychology Dept, Brockport, NY 11420

**Behavior Analysts in Education SIG.** BARBARA BECKER, M. Chapman School, 5 Bradhurst Ave, Hawthorne, NY 10532; NAN MCCORKLE, F.S. Keller School, 356 Neperhan Ave, Yonkers, NY 10701

**Behavioral Gerontology SIG.** KATHRYN BURGIO, Univ of Pittsburgh, Sch of Medicine, 110 Lothrop Hall, Pittsburgh, PA 15213

**Behaviorists for Social Action SIG.** JERRY ULMAN, Ball State Univ, Special Education Dept, Muncie, IN 47306

**Clinical Behavior Analysis SIG.** MICHAEL DOUGHER, Univ of New Mexico, Psych Dept, Albuquerque, NM 87131

**Computer Users SIG.** CHARLES MERBITZ, Rehabilitation Inst of Chicago, 448 E. Ontario, Chicago, IL 60611

**Correctional Behavior Analysis SIG.** SHERMAN YEN, PO Box 133, Owings Mills, MD 21117

**Direct Instruction SIG.** PAUL WEISBERG, Univ of Alabama, Psychology Dept, University, AL 35487

**Ethical & Legal Issues SIG.** DEBORAH SHANLEY, Medgar-Evers Clg, Education Div, 1150 Carroll St, Brooklyn, NY 11225

**Experimental Analysis of Human Behavior SIG.** PHIL CHASE, MICHAEL PERONE, West Virginia Univ, Psychology Dept, Morgantown, WV 26506-6040

**Experimental Analysis of Nonhuman Behavior.** LYNN BRADSHAW, 1211 Southern Ave, Kalamazoo, MI 49001; CARL CHENEY, Utah State Univ, Psychology Dept, Logan, UT 84322-2810

**Interbehaviorists in ABA SIG.** LINDA HAYES, Univ of Nevada, Psychology Dept, Reno, NV 89557-0062

**JABA Users GROUP SIG.** JON BAILEY, BMC Inc, 1708 Kathryn Dr, Tallahassee, FL 32308

**OBM Network SIG.** CARL JOHNSON, Central Michigan Univ Psychology Dept, Mt Pleasant, MI 48859

**Rehabilitation & Independent Living SIG.** KATHY MADIGAN, Children's Workshop, 248 Nutmeg St, San Diego, CA 92103

**Software for Educating the Developmentally Disabled.** DAVID COLEMAN, WARC, 121 Westmoreland Ave, White Plains, NY 10606

**Standard Celeration Chart Data Sharing.** STEVE GRAF, Youngstown State Univ, Psychology Dept, Youngstown, OH 44555

**Verbal Behavior SIG.** MARK SUNDBERG, 1236 Stafford Ave, Concord, CA 94521

**Walden II Communities.** LESLIE BURKETT, Univ of North Texas, Ctr for Behavioral Studies, Denton, TX 76203

## NEW SPECIAL INTEREST GROUP ORGANIZING

A special interest group is organizing with the experimental analysis of nonhuman subjects as the focus. The purpose of the group will be to provide a forum for the discussion of issues relevant to research with nonhuman subjects, with current emphasis on the ethical care and treatment of nonhumans and the effects of public policy on such research.

Several researchers, including Philip Himeline, Ellen Reese, and Larry Alferink, have already expressed strong interest in providing support to the formation of such a group. Are you interested? Write to A. Lynn Bradshaw, 1211 Southern Ave., Kalamazoo, MI 49001. Please encourage your colleagues who may be interested in this topic to respond as well.

### REMINDER

Renew your ABA membership for 1990  
before December 31, 1989,  
to receive a discount!

## MEMBERSHIP RECRUITMENT INCENTIVES

Recruit NEW MEMBERS to ABA and get an instant reduction on your dues! For each NEW PAID MEMBER you recruit, you receive a discount corresponding to the membership category of the person recruited! (New members are those who have never been a member of ABA.) For each person you recruit, send the membership form and payment of those recruited with YOUR membership renewal form and payment to ABA, ATTN: Sharon Myers, Western Michigan University, 258 Wood Hall, Kalamazoo, MI 49008-5052. **Remember:** Take an immediate discount on your membership dues!

MEMBERSHIP CATEGORY	DISCOUNT
Sustaining Member	\$20.00
Supporting Member	\$10.00
Full Member	\$ 8.00
Affiliate Member	\$ 8.00
Emeritus Member	\$ 3.00
Student Member	\$ 3.00
Adjunct Member	\$ 2.50

# ASSOCIATION FOR BEHAVIOR ANALYSIS

## 1990 MEMBERSHIP FORM

### COPY THIS FORM TO RECRUIT MEMBERS!!!!

#### ABA MEMBERSHIP FORM - COPY THIS FORM TO RECRUIT MEMBERS!

Please read the following information and complete all sections of the membership form. Send to The Association for Behavior Analysis, Western Michigan University, Psychology Department, Kalamazoo, MI 49008-5052. Telephone 616-387-4494

Payment may be made by check (in U.S. Funds only) or by Visa or Master Card:

#### RENEWING MEMBERS: Received before December 31

	ONE-YEAR	THREE-YEARS
___ Sustaining	\$200.00	\$600.00
___ Supporting	\$100.00	\$300.00
___ Full	\$ 60.00	\$180.00
___ Affiliate	\$ 60.00	\$180.00
___ Emeritus	\$ 20.00	\$ 60.00
___ Student	\$ 20.00	
___ Adjunct	\$ 15.00	

#### NEW MEMBERS

ONE-YEAR	THREE-YEARS
\$105.00	\$505.00
\$ 65.00	\$265.00
\$ 45.00	\$165.00
\$ 45.00	\$165.00
\$ 19.00	\$ 59.00
\$ 19.00	
\$ 13.00	

Visa Card # \_\_\_\_\_ Master Card # \_\_\_\_\_

Date of Expiration \_\_\_\_\_ Signature \_\_\_\_\_

Bank transfer for International Members Only: Portage Commerce Bank

NAME \_\_\_\_\_ SEX F M

ADDRESS \_\_\_\_\_

ADDRESS \_\_\_\_\_

CITY \_\_\_\_\_ STATE \_\_\_\_\_ COUNTRY \_\_\_\_\_ POSTAL CODE \_\_\_\_\_

TELEPHONE Office \_\_\_\_\_ - \_\_\_\_\_ - \_\_\_\_\_ Ext \_\_\_\_\_ Home \_\_\_\_\_ - \_\_\_\_\_ - \_\_\_\_\_

FAX NUMBER \_\_\_\_\_ E-MAIL NUMBER \_\_\_\_\_

POSITION TITLE \_\_\_\_\_

PRIMARY DISCIPLINE Underline one: Psychology Education Behaviorology

Other \_\_\_\_\_ WHAT IS YOUR PRIMARY ACTIVITY: Underline one:

Research Clinical Teaching Other \_\_\_\_\_

LIST MOST RECENT DEGREE RECEIVED / INSTITUTION ATTENDED / DATE

FOR OFFICE USE ONLY - DO NOT WRITE IN THIS SPACE								
DATE	AMOUNT PAID	A	B	D	F	H	M	S
		YEAR 90	91	92	93	94	95	96

PLEASE LIST ALL ABA NATIONAL/REGIONAL/STATE/LOCAL CHAPTERS TO WHICH YOU BELONG:

1. \_\_\_\_\_ 3. \_\_\_\_\_  
2. \_\_\_\_\_ 4. \_\_\_\_\_

CHECK ALL OF INTEREST IF A NEW MEMBER, OTHERWISE CHECK IF A SIG MEMBER:

- |  |   |
|--|---|
| <input type="checkbox"/> Behavior Analysis in Education          | <input type="checkbox"/> Behavior Gerontology           |
| <input type="checkbox"/> Behaviorists for Social Action          | <input type="checkbox"/> Clinical Behavior Analysis     |
| <input type="checkbox"/> Computer Users Group                    | <input type="checkbox"/> Correctional Behavior Analysis |
| <input type="checkbox"/> Direct Instruction                      | <input type="checkbox"/> Ethical & Legal Issues         |
| <input type="checkbox"/> Experimental Analysis of Human Behavior | <input type="checkbox"/> Interbehaviorists in ABA       |
| <input type="checkbox"/> JABA Users Group                        | <input type="checkbox"/> OBM Network                    |
| <input type="checkbox"/> Rehabilitation & Independent Living     | <input type="checkbox"/> Verbal Behavior                |

#### MEMBERSHIP STATUS, BENEFITS AND REQUIREMENTS

1. SUSTAINING OR SUPPORTING MEMBERS are eligible to vote on ABA business matters, to participate in the Nomination and Election of Officers, to receive citation in the Newsletter and Convention Program Book, and to receive the Newsletter, THE BEHAVIOR ANALYST and special Convention registration fees. REQUIREMENTS: Same as Full Members below.

2. FULL MEMBERS are eligible to vote on ABA business matters, to participate in the Nomination and Election of Officers, and to receive the Newsletter, THE BEHAVIOR ANALYST, and special Convention registration fees. REQUIREMENTS: The minimum of a Masters degree in Applied or Experimental Analysis of Behavior; send vita and course records when requesting this status for the first time.

3. AFFILIATE MEMBERS receive the Newsletter, THE BEHAVIOR ANALYST, and reduced Convention registration fees. REQUIREMENT: Send letter of recommendation from a voting member of ABA.

4. EMERITUS MEMBERS receive the Newsletter, THE BEHAVIOR ANALYST, and subsidized Membership dues/Convention registration fees. REQUIREMENT: Retired, or past the age of 65; send verification of retirement or age.

5. STUDENT MEMBERS receive the Newsletter, THE BEHAVIOR ANALYST, and subsidized Membership/Convention registration fees. REQUIREMENTS: Full time Student, Intern or Resident; "Proof of Student Status" section must be completed at the time of application or renewal.

#### STUDENT STATUS CAN BE GRANTED ONLY IF THIS SECTION IS COMPLETED & SIGNED

The ABA Executive Council unanimously voted to subsidize the membership dues and convention registration fees for Student Members (please see front of this form). All persons applying/renewing as Student Members must complete the following statement and have it signed by your Department Chair or Program Director.

This is to certify that \_\_\_\_\_ is a full-time  
\_\_\_\_\_ student, \_\_\_\_\_ resident, \_\_\_\_\_ intern in the Department of \_\_\_\_\_  
at \_\_\_\_\_.

Signature \_\_\_\_\_

Title \_\_\_\_\_

Date \_\_\_\_\_

6. ADJUNCT MEMBERS receive the Newsletter and special Membership/Convention Registration fees. REQUIREMENTS: Membership in an affiliated Chapter of the Association for Behavior Analysis; a letter from the Chapter confirming Chapter membership must accompany this form.



STATE	MEMBERSHIP					REGISTRATION				
	1989	1988	1987	1986	1985	1989	1988	1987	1986	1985
Alabama	32	35	36	30	34	19	24	33	27	24
Alaska	2	2	2	1	0	1	1	2	2	0
Arizona	22	22	24	16	13	13	11	19	12	9
Arkansas	12	11	18	5	7	2	2	14	0	5
California	105	111	93	91	68	59	67	60	57	30
Colorado	11	12	12	10	11	3	3	7	4	5
Connecticut	19	20	14	11	8	6	13	10	5	6
Delaware	7	10	7	1	4	5	16	7	0	5
D.C.	10	9	8	3	7	7	8	6	3	6
Florida	74	69	70	43	47	54	47	50	31	42
Georgia	23	26	30	28	24	7	14	25	17	12
Hawaii	6	4	3	2	5	4	0	1	2	3
Idaho	1	1	0	0	0	1	1	0	0	1
Illinois	130	97	112	150	123	104	67	80	132	81
Indiana	42	29	44	42	44	31	14	37	27	29
Iowa	34	32	19	25	34	24	21	9	23	24
Kansas	81	89	92	96	107	54	63	70	84	84
Kentucky	13	16	15	8	15	4	3	11	2	6
Louisiana	9	23	22	22	17	4	21	20	15	11
Maine	8	7	2	3	4	5	1	1	2	1
Maryland	56	71	41	45	45	36	63	33	37	33
Massachusetts	105	150	109	97	101	70	128	84	75	76
Michigan	184	190	179	186	186	115	114	112	123	109
Minnesota	77	69	80	90	86	54	38	56	80	62
Mississippi	9	10	11	6	9	2	3	8	3	7
Missouri	17	23	12	23	12	6	10	3	15	9
Montana	3	2	5	12	6	0	0	5	9	4
Nebraska	18	16	12	10	12	8	4	4	5	10
Nevada	13	12	8	8	7	4	9	5	6	6
New Hampshire	9	6	4	4	6	8	9	3	1	6
New Jersey	36	40	22	20	26	22	31	14	10	15
New Mexico	12	16	15	12	14	9	12	11	6	7
New York	154	164	102	96	94	79	126	73	77	69
N. Carolina	65	51	53	59	68	39	43	44	41	52
N. Dakota	5	3	5	4	0	1	2	4	2	0
Ohio	65	73	56	57	61	48	52	42	36	60
Oklahoma	1	0	0	1	1	0	0	0	0	0
Oregon	22	15	17	11	14	12	9	20	9	7
Pennsylvania	60	72	51	59	68	40	77	36	44	55
Rhode Island	16	13	14	17	17	8	9	14	12	14
S. Carolina	4	6	7	3	2	1	6	5	3	0
S. Dakota	3	4	1	3	2	0	0	0	3	1
Tennessee	22	23	38	18	39	12	8	40	10	16
Texas	64	71	63	58	70	40	49	38	33	28
Utah	33	44	43	50	36	26	32	40	49	29
Vermont	8	7	7	7	6	5	4	5	4	5
Virginia	19	23	21	20	22	11	16	11	8	17
Washington	31	27	26	31	22	24	18	18	29	14
W. Virginia	41	69	72	78	79	30	53	55	66	69
Wisconsin	48	31	34	38	30	49	18	26	45	22
Wyoming	1	1	0	2	0	0	0	1	1	1
UNITED STATES	1842	1927	1731	1712	1713	1166	1340	1272	1287	1187

## POSITIONS AVAILABLE

**CLINICAL SPECIALIST IN FEEDING DISORDERS.** Clinical/administrative position involving the supervision of infants & children receiving behavioral treatment for feeding disorders. Primarily inpatient cases, some outpatient cases. The behavioral feeding program at Kennedy Institute is an established, highly successful program with a multidisciplinary approach to treatment. Primary responsibilities include assisting with case supervision, implementation of treatment protocols, conducting consultation on feeding problems at Kennedy & Johns Hopkins Hospital, parent training, & administrative duties. Qualifications: MS or PhD in psychology or related field, experience with MR/DD, applied behavior analysis, & research. Please send letter of interest, CV & three letters of recommendation to Deborah Custer, PhD, The Kennedy Institute, Behavioral Psychology Dept., 707 N. Broadway, Baltimore, MD 21205. Phone: 301-550-9455.

**POSTDOCTORAL FELLOWSHIP IN CLINICAL BEHAVIOR ANALYSIS.** Position now available at private psychiatric hospital in Dallas, TX. Intense & stimulating clinical environment, with a combination of extensive outpatient services, long-term outpatient residential care, specialized treatment programs, & acute to long-term inpatient treatment. Ideal situation for training & rapid learning for individuals interested primarily in clinical work. Candidates must have a strong background in basic principles of behavior analysis as well as some clinical experience. Candidates must be eligible for licensure in Texas. Behavioral services include group & individual therapy (both inpatient & outpatient), developing & implementing individual contingency management programs, some staff training. Psychology department of 20 includes specialists in behavior analysis, neuropsychology, substance abuse, & both child/adolescent & adult clinical. Interdisciplinary team approach used throughout hospital. Postdoctoral fellows have an exciting opportunity to put academic training in behavior analysis into clinical use. First year salary, \$30,000; additional year may be negotiated. Excellent benefits package. Contact Betty K. Armstrong, PhD, 4701 Samuell Blvd, Ste D, Dallas, TX 75228.

**POSTDOCTORAL POSITIONS IN HUMAN BEHAVIORAL PHARMACOLOGY.** Applicants are sought for two positions in the Substance Abuse Research Center (SARC), Department of Psychiatry & Behavioral Sciences, University of Texas Health Science Center, Houston. SARC facilities include Preclinical Research Laboratories for rodent & primate research, the Human Behavioral Pharmacology Laboratory (HBPL), & the Addictive Behaviors Clinic (ADC). SARC researchers consist of six full-time faculty, two research associates, & a NIDA postdoctoral fellow; additional faculty are being recruited. Position

## POSITIONS AVAILABLE

#1 in HBPL would involve collaboration on behavioral & drug studies of human multioperant responding. Position #2 in ADC/HBPL would involve collaboration on studies of behavioral & pharmacological intervention for the treatment of opiate & cocaine abuse & initiation of human drug self-administration studies. Development of one's own research interests would be encouraged, but collaboration on existing projects would be expected. Background in the experimental analysis of behavior highly desirable, as well as computer programming experience. Interested persons should send a c.v. & outline of previous experience & research interests to: Position #1--Don R. Cherek, PhD, Position #2--John Grabowski, PhD, Dept of Psychiatry & Behav Sci, Substance Abuse Res Ctr, University of Texas Health Science Center, 1300 Moursund, Houston, TX 77030. Telephone: 713-792-7925.

**PSYCHOLOGIST-MS or PhD.** Animal operant or human applied behavior analysis. **Requirements:** Master's or Doctorate in psychology, with training in animal operant (experimental analysis of behavior), behavioral modification, or human applied behavior analysis. **Duties:** Oversee behavioral treatment & educational programs at residential school for children & young adults with severe (often autistic-like) behavior disorders. Opportunity to work in a private program committed to a behaviorist orientation & able to implement effective behavior modification procedures as part of a comprehensive behavioral educational/treatment package. Prior experience not required. Ideal situation for experimentally-trained person wishing to try clinical work. Able to be supervised while working towards licensure. Salary range \$40,000-50,000 for PhD, \$25,000-35,000 for MS, depending on experience. Higher salary negotiable, depending on experience. Please call or send resume to Robert Worsham, PhD, Behavior Research Institute, 240 Laban St, Providence, RI 02909. Phone: 401-944-1186.

**PSYCHOLOGIST IV:** Work involves developing & administering total psychology program for an ICF/MR facility serving 400 profoundly & severely retarded adults & children & includes the professional supervision of 9 psychologists. Requires a PhD in psychology from an accredited program & 4 years of experience in a supervisory or administrative capacity. Prefer candidates who have strong experience & training in the developmental psychology field. Annual starting salary range: \$30,936-41,460, depending on qualifications. Direct resumes or inquiries to Personnel Office, Winfield State Hospital & Training Center, Rt 1/Box 123, Winfield, KS 67156. EOE.

## ABA 16TH ANNUAL CONVENTION

MAY 27-31, 1990

OPRYLAND HOTEL, NASHVILLE, TENNESSEE

## CONFERENCES AND SEMINARS

**PERUVIAN SOCIETY OF BEHAVIOR ANALYSIS & MODIFICATION:** IV BIENNIAL CONVENTION OCT 9-13, 1989. **BEHAVIOR ANALYSIS APPLIED TO EDUCATION,** OCT 16-18, 1989. Contact Jose Anicama, SPAMC, Apto Postal No. 5045, Lima, PERU.

**CLINICAL PSYCHOLOGY & PSYCHOTHERAPY,** Berlin, FEB 18-23, 1990. Topic: Dominant Symptom: Health. Contact Waltraud Deubert, Deutsche Gesellschaft fur Verhaltenstherapie, Postfach 1343, 7400 Tubingen, WEST GERMANY.

**ASSN FOR THE ADVANCEMENT OF BEHAVIOR THERAPY,** Washington, DC, NOV 2-5, 1989, 23rd Annual Convention. Theme: Controversies & New Directions in Behavior Therapy. For a copy of the Convention Program, contact AABT Program Chair, 15 W. 36th St., New York, NY 10018 (212-279-7970).

**CALIFORNIA NEUROPSYCHOLOGY SERVICES** Conferences. **NEUROLOGICAL FOUNDATIONS OF BEHAVIOR:** exchange ideas with experts in neurology, neuropsychology, neuroscience, psychology & psychiatry. **NEURODEVELOPMENT & ITS IMPLICATIONS FOR ATTENTION, EMOTION & COGNITION:** focus on children. Contact, California Neuropsychology Services, 39 Trellis Dr, San Rafael, CA 94903 (415-492-9023).

**GERONTOLOGICAL SOCIETY OF AMERICA** 42nd Annual Scientific Meeting, NOV 17-19, 1989, Hyatt Regency, Minneapolis, MN. Contact Gerontological Society of America, 1275 K St, NW, Suite 350, Washington, DC 20005-4006 (202-842-1275).

**RELATIONSHIPS BETWEEN HUMANS & ANIMALS** 5th International Conference. NOV 15-16, 1989: Scientific Sessions. NOV 17-18, 1989, Practitioners' Sessions. Contact French Assn for Information & Research on Companion Animals, 7, rue du Pasteur Wagner, 75011 Paris, FRANCE

**STRATEGIES FOR PATIENT COUNSELING: HEALTH-CARE TEAM COMMUNICATIONS FOR ENHANCED PATIENT RELATIONS** sponsored by continuing medical education at Chicago College of Osteopathic Medicine. Papers & workshop presentation proposals are sought for the JUN 1-2, 1990 conference. Proposals considered in any area of patient-professional relations. Submission deadline: OCT 1, 1989. Contact CME/CCOM, 5200 S. Ellis Ave, Chicago, IL 60615 (312-947-4610).

**STUDENT ASSISTANCE CONFERENCES.** GREAT LAKES, NOV 6-8, 1989, Hyatt Regency, Indianapolis. **NORTHEAST REGIONAL,** FEB 11-13, 1990, Wyndham Franklin Plaza, Philadelphia. Sponsored by the Student Assistance Journal. Contact Diane Vella, 2145 Crooks Rd, Ste 103, Troy, MI 48084 (313-643-9580; FAX 313-4435).

**U.S. PSYCHIATRIC & MENTAL HEALTH CONGRESS.** NOV 10-12, 1989. New York City Hilton. Contact Andrea Crossetta, CMC, 200 Connecticut Ave, Box 4990, Norwalk CT 06856-4990 (203-852-0500).

## PUBLICATIONS

**SOS! HELP FOR PARENTS:** Useful family therapy tool & parents' handbook. Effective, illustrated, research-based behavioral methods. Reviewed in USA Today. \$10.45. Contact **Parents Press**, PO Box 2180-H, Bowling Green, KY 42102. Send for free catalog & Time-Out Parent Inventory (TOPI).

**ANALYSIS OF VERBAL BEHAVIOR**, a publication of the ABA Verbal Behavior Special Interest Group, dedicated to the development of behavioral analyses of issues relevant to verbal behavior. Contact Mark Sundberg, 1236 Stafford, Concord, CA 94521.

**BEHAVIOR ANALYSIS & SOCIAL ACTION**, a publication of the ABA Behaviorists for Social Action Special Interest Group; articles relating behaviorism to progressive social change. Write Richard Rakos, Cleveland State Univ, Psychology Dept, Cleveland OH 44115.

**DICTIONARY OF BEHAVIORAL SCIENCE**, the standard reference in psychology, psychiatry, & related disciplines for 15 years, new 2nd edition promises to continue that tradition. Edited by Benjamin B. Wolman, the **DICTIONARY** now covers all fields of behavioral sciences including social work, anthropology, education, & human relations; provides precise, current definitions of more than 20,000 terms. Price: \$39.95. For information, call Kristina K... Academic Press, 619-699-6820.

**EAP DIGEST**, a magazine on the Employee Assistance Program field, features two articles in JUL/AUG issue on eldercare & the workplace. Also articles on EAPs in colleges, relationship addiction, help for professional helpers, evalu-

ating the cost-effectiveness of EAPs, & several regularly appearing departments. Contact **EAP Digest Subscriptions**, 2145 Crooks Rd., Troy, MI 48084 (313-643-9580).

**FAMILY DISEASES: ARE YOU AT RISK?** examines the genetics revolution & its implications for your health, explores your mental & behavioral roots, & discusses genetic diseases & whether you & your family may be at risk, all in a framework of family health history. Contact Joe Garonzik, **Genealogical Publishing Co.**, 1001 N. Calvert St., Baltimore, MD 21202 (301-837-8271). \$14.95 + \$2.50 shipping/handling.

**JOURNAL OF EARLY INTERVENTION (JEI)** (formerly **JOURNAL OF THE DIVISION FOR EARLY CHILDHOOD**) publishes manuscripts related to developmental, behavioral & educational interventions for infants & young children with special needs & their families. Manuscripts reporting applied research, integration of the research literature, policy analyses, & basic research with explicitly stated applied implications are welcome. JEI is internationally distributed to nearly 6000 members of the Division for Early Childhood of the Council for Exceptional Children, as well as other professionals & institutions. Send inquiries or manuscripts for publication to Dr. Samuel L. Odom, Editor **JEI**, Box 328, Peabody College, Vanderbilt University, Nashville, TN 37203.

**NEW FROM BAYWOOD...HEALTH & ECONOMIC STATUS OF OLDER WOMEN: RESEARCH ISSUES & DATA SOURCES** focuses on major methodological issues, calling attention to some contradictory findings & draws

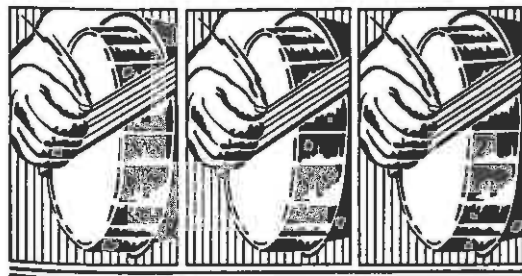
## PUBLICATIONS

attention to the need for different or more sophisticated approaches to research about older women. 232 pages, cloth cover, \$24.95. Send your prepaid order now & take advantage of the introductory price of \$22.46 + \$1.50 postage. **ORGANIZING EARLY EXPERIENCE: IMAGINATION & COGNITION IN CHILDHOOD** focusing on developmental psychology, the book features 12 essays exploring the full range of contemporary views & developments in research & theory in the relationship between imagination & cognition in childhood. 241 pages, paperback, \$20.95. Send your prepaid order now & take advantage of the introductory price of \$18.86 + \$1.75 postage. **REPRESENTATIONS: SOCIAL CONSTRUCTIONS OF GENDER** stories about women, about the conflicts, choices, & opportunities that are present in the lives of women, both real & imagined. It is a book about the development of social & political movements, the effect such movements have upon scholarship, the challenges that face scholarship with a political focus, & the continuing vigilance that is called for if such scholarship is to continue to develop & mature. 326 pages, cloth cover, \$33.50. Send your prepaid order now & take advantage of the introductory price of \$30.25 + \$2.00 postage. **SPECIAL RESEARCH METHODS FOR GERONTOLOGY** providing researchers with a collection of concrete treatments of both everyday issues & some unusual problems that may be more frequent in gerontological research. 317 pages, cloth cover, \$32.95. Send your prepaid order now & take advantage of the introductory price of \$29.66 + \$2.00 postage. Send orders to **Baywood Publishing Co.**, 26 Austin Ave, PO Box 337, Amityville, NY 11701.

SIXTEENTH ANNUAL CONVENTION

OPRYLAND HOTEL

MAY 27-31, 1990



**A · B · A**  
NASHVILLE 1990

## EQUIPMENT AVAILABLE

Various electro-mechanical devices are available at no charge other than shipping costs. Among the items are relays, tapereaders, snap leads, counters, pushbuttons, relay racks, switches, etc. Rat cages & a 30-60 cage holding rack may also be available. Condition varies from new to fair. Send any expression of interest (include phone number) to: Dr. C. Paul, Adelphi University, Psychology Department, Chapman Hall, Garden City, NY 11530.

Help your company continue to meet today's demand for increased competitiveness, efficiency, and better employer-employee relations!

# JOURNAL OF ORGANIZATIONAL BEHAVIOR MANAGEMENT

Editor: Thomas C. Mawhinney, PhD  
College of Business & Administration  
University of Detroit

**"Provides relevant, practical, state-of-the-art information which can be of tremendous benefit to business, government, and service organizations as they try to meet today's demand for increased competitiveness, efficiency, and employer-employee cooperation."**

Randy Keyworth, Spectrum Center for Educational and Behavioral Development, Inc., Berkeley, California

♦ ♦ ♦

**"An important medium for reporting behavioral research data of significance to improving productivity and quality of life in the workplace. The articles consistently present active, empirically based efforts aimed at changing organizations, rather than simply focusing on opinion or arm-chair speculation. I highly recommend JOBM to both organizational development practitioners, and human resource managers alike."**

James Eubanks, PhD, Department of Psychology, Central Washington University, Ellensburg, Washington

♦ ♦ ♦



**The Haworth Press, Inc.**

10 Alice Street, Binghamton, NY 13904-1580

Here is the only professional journal devoted to behavior management in organizations, serving as a tool for improving productivity and the quality of working life. Top researchers provide proven methods—backed by facts, not opinions, to show you the the best practical ways to apply behavior management in the workplace. JOBM belongs on the desk of every personnel, industrial or managerial professional who truly believes that there are scientific principles to improve employee performance—and who wants to bring these principles out of the lab and into the workplace.

**TO ORDER:** Please have an officer of the Association for Behavior Analysis sign to verify your ABA membership, complete the information below, attach payment, and return to us.

ABA Officer Signature \_\_\_\_\_

**PLEASE SEND ME A SUBSCRIPTION TO JOBM AT THE SPECIAL ABA DISCOUNT:**

Check one:

- ☐ ABA Professional Member: 30% discount: \$25.20 (reg. \$36)  
☐ ABA Student Member: 40% discount: \$21.60 (reg. \$36)

Check one:

- ☐ 1-year subscription (2 issues each year)  
( ) Professional: \$25.20 ( ) Student: \$21.60  
☐ 2-year subscription (2 issues each year)  
( ) Professional: \$50.40 ( ) Student: \$43.20

Postage & handling included. If paying in Canadian funds, add 25% for exchange rate. Overseas orders, add 35% to journal total. Discounts are not good in conjunction with any other offers.

- ☐ Payment enclosed: \$ \_\_\_\_\_  
☐ Please charge to my account: ( ) Visa ( ) MasterCard ( ) American Express  
Account Number \_\_\_\_\_  
Expiration Date \_\_\_\_\_ Bank # (MC only) \_\_\_\_\_  
Signature \_\_\_\_\_

ABA CONF (010 FLY 4/7)

WESTERN MICHIGAN UNIVERSITY

ABA/Psychology  
Kalamazoo, Michigan 49008-5052

Bulk Rate  
U.S. Postage

**PAID**

Kalamazoo, Michigan  
Permit No. 478